

2026



BEDROCK

Sons Sell!

Cattle Fax
presentation with
Troy Applehans
March 13th, 2026
7:00 PM

RIPPE GELBVIEH

28TH Annual Bull Sale

112 Balancer®, Gelbvieh & Angus Bulls,
SATURDAY, MARCH 14 • 1:00 P.M.

Complimentary Lunch • 12:00

SALE LOCATION: Fairbury Livestock Company
Fairbury, NE

Greetings Cattlemen & Cattlewomen:

Sometimes I can't believe how good this market truly is, I hope it continues for the rest of my life. Fertility continues to be a problem in the commercial cattle industry and Gelbvieh excels in fertility and longevity. I continue to preach every commercial cowherd needs some Gelbvieh in their herd, so they last.

Rippe Gelbvieh has continued to assemble a cow herd that is balanced in ALL traits that are economically important to our customers – commercial cattlemen. We have a complete lineup of Balancer and Purebred Gelbvieh bulls that have enough genetic variation to compliment your cow herd and allow you to take full advantage of the “free lunch” that heterosis and hybrid vigor offer.

In my eyes, what sets us at Rippe Gelbvieh apart is how much we are tied into the cattle business. My dad, Duane, manages the cow calf and farming operation. I, Dustin, own and operate Roode Feedyard at Fairbury, NE. I buy a lot of customer calves and feed out our own each year. This allows us to collect carcass data back on many, many individual animals. I want to emphasize this is not a side business for us, we both make our living in the cattle industry and are really passionate about its future.

Joel Cast is also very instrumental in this operation. Joel knows the cattle as well as anyone. I can point out a cow 50 yards away and he can tell me what cow it is along with 2 generations back in her pedigree and what the birthweight was of her last calf. We couldn't manage this herd or collect the data we do without him.

Many places preach maternal. How can they preach maternal without taking cow weights and looking at cow efficiency? Joel takes pride in taking an udder score on every cow that calves. Every heifer is DNA'd prior to being selected as a replacement.

Not many operations can match the genetic lineup we are offering. It isn't by chance. We run a very large seedstock herd and are very aggressive in our AI and ET program along with owning some of the best bulls in the business. From a carcass standpoint, we have as much actual kill data as anyone in the country. We ultrasound the bulls and heifers each and every year.

It is our hope that the information we track is valuable to you when you are selecting bulls. I won't buy a bull that is not sire verified. I won't buy a bull without knowing the udder on the dam. I won't buy a bull that doesn't have genomics. You shouldn't either. We will be posting additional information on a supplement sheet prior to the sale on our website. Please call ahead of the sale and we can go over your program and your program's needs.

Duane & Dustin Rippe

Contact Information:

For information regarding the bulls contact Dustin.

Dustin & Karla Rippe

C - 316-323-4874

C- 402-200-0555

Email: dustin@rgcattle.com

Duane & Brenda Rippe

6775 Road D – Hubbell, NE 68375

C – 402-200-0096

Joel Cast

C - 402-641-1705

10th year at Rippe Gelbvieh

Stan Sims

C – 850-557-0115

1st year at Rippe Gelbvieh

Sale Manager:

Chris Mitchell

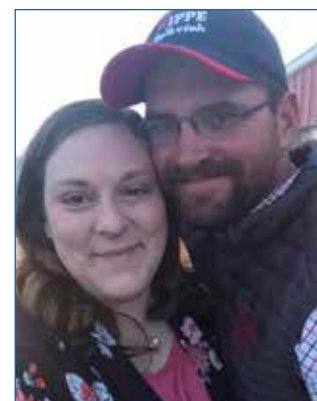
MMS

Mitchell Marketing Services
20180 NE Roy Golden Rd - Blountstown, FL 32424

Chris Mitchell
334-695-1371
mchrismitchell@aol.com
www.mms.bz



Dustin, Karla, Brenda & Duane



Joel & Amanda Cast



Stan Sims family

General Information – Terms & Conditions

Sale Location:

Fairbury Livestock Company, 1312 Sale Barn Road,
Fairbury, NE 68352. On the southeast corner of Fairbury.

Lodging:

A Block of Rooms has been reserved at the Edgewood Hotel & Suites in Fairbury, NE for a discounted rate. To make reservations, call 402-587-5082. Ask for the Rippe Gelbvieh rate.

Auctioneer:

Joe Goggins - Billings, MT406-861-5664

Ringmen:

Andee Marston, Kansas Stockman785-250-4449

Troy Applehans, Cattle Fax303-886-0775

Matt Printz, Kansas Stockman308-440-2918

Commercial Marketing Agents:

Zach Johnson - Wyoming & Montana.....307-575-2171

Supplement Sheet:

The supplement sheet will be available on sale day and on our website about 3 days prior to the bull sale. It will contain Yearling Weights, Ultrasound information, Scrotal measurements. Any information on the supplement sheet or announced on sale day will take precedence over the catalog

Health:

All bulls will be ready for interstate shipment. They will be BVD tested and had their Lepto shot along with being poured with an Cydectin type product before delivery. Most Importantly, all bulls are raised on our operation under our guidance. This is not a consignment sale and we have no cooperators.

Sale Day Phones:

Sale Barn – Larry Junker 402-300-1141

Dustin Rippe 316-323-4874

Dustin Rippe 402-200-0555

Duane Rippe..... 402-200-0096

Joel Cast 402-641-1705

Stan Sims 850-557-0115

Karla Rippe..... 402-366-1943

Chris Mitchell 334-695-1371

Website: www.rippegelbvieh.com

SCHEDULE OF EVENTS:

March 8th 2026

Bulls & Brats 1:00 to 5:00 PM. Come Evaluate the bulls in person prior to the sale, at the ranch.

March 13th 2026

Cattle Fax Presentation 7:00 PM. Come Listen to Troy Applehans give us an update on Agricultural markets.
Meal Provided @ the Sale Barn.

March 14th 2026

9:00 AM - 12:30 PM - View the bulls at the Fairbury Sale Barn
12:00 PM - Lunch Provided with homemade Pie
1:00 PM - Sale Starts

Terms and Conditions:

Cash on sale day. All cattle will sell under the recommended terms of the AGA. If you would like to be offered credit, please call Duane prior to sale day. We will be retaining 50% semen and certificate interest on every bull in the catalog unless it is noted different on sale day.

Guarantee:

The cattle are guaranteed to be fertile and reproductively sound. All bulls selling come with a first-year breeding-season guarantee against injury or infertility issues. "Breeding season" is defined by the time of turnout to 60 days later. **All bulls will have passed a semen evaluation before being delivered.** If any fertility problems happen during the first breeding season, a replacement bull will be available until the purchased bull's long-term fertility can be determined. If a bull sustains a breeding injury during the first breeding season, a credit on a future bull purchase will be given. If a bull sustains an injury or fertility issue, we ask that it is evaluated and treated immediately by a veterinarian and a report is provided by the veterinarian doing the evaluation. If the vet determines the bull is no longer a fertile and mobile breeder, the following formula will be used to determine credit issued on a future purchase: purchase price – salvage value - \$2,500 (if injury related) = credit.

Volume Discount:

If you purchase five or more bulls in one year, you will receive 5% off the price of each bull.

Sight Unseen Purchases:

If you can't attend the sale and you want to buy call Dustin Rippe about your different purchasing options. We handle several customers bull purchases each year. If the bulls don't meet your approval when we unload them, you don't own them.

Delivery & Trucking:

Free delivery within 300 miles of Hubbell, NE. For all bulls further than 300 miles, we will make every effort to accommodate the buyer. Delivery will not exceed \$300/bull to a central location. Any bull taken on sale day, we will deduct \$100 from the bill.

Transfers:

Registration papers will be transferred upon request.

Liability:

Neither the sale host, sale facility, sale management, nor the auctioneer assumes any liability for any accidents that may occur.

Genetic Information:

All lots have had a HD 50K test, and the EPD's listed reflect the 50k enhancement. The test verifies parentage and increases predictability. All animals are tested free of any known genetic defect.

ET Bulls:

The ET bulls are raised by a surrogate mother. Therefore, the bulls actual birth weight and weaning weight are not a representation of the bulls genetics. Consequently, we have chosen not to provide this information as it is inaccurate. EPDs do a much better job of showing the genetic value of these bulls.

Rippe Gelbvieh Balancer® and Gelbvieh Bull Sale:

Black Balancer Bulls..... Lots 1-76
 Black Purebred Bulls..... Lots 100-114
 Angus Bulls Lots 200-221

INDEXES

Maternal Profit Index (MPI): In this production scenario, Gelbvieh bulls are mated to Angus-based cows with surplus calves marketed at weaning, with replacement heifers retained from the calf crop. EPDs weighted in this index are Calving Ease Direct (CED) and Maternal (CEM), Weaning Weight (WW), Milk (MILK), Mature Weight (MWT), Dry Matter Intake (DMI), Stayability (STAY), and Heifer Pregnancy (HP). Mature weight is the primary driver and represents the significant cost of maintenance energy requirement in the cow-calf sector. Weaning Weight and Milk (expressed in pounds of calf weaning weight) represent the principal revenue stream. Stayability helps account for differences in replacement costs in the system and the effect of heifer retention on revenue streams. This index should be used by commercial cattlemen whose production scenario includes the traditional marketing of calves at weaning and replacement retention from the herd.

Feeder Profit Index™ (FPI™): Envisioned as a completely terminal index, FPI assumes all calves are marketed as finished beef carcasses priced on a value-based grid. Thus, it shouldn't be used in production scenarios where replacements are kept from these matings. The new FPI formulation more precisely weights Economically Relevant Traits (ERTs) available for selection, including the key carcass traits of Carcass Weight (CW), Ribeye Area (REA), and Dry Matter Intake (DMI) that were not included in the original formulation. The new FPI also weights Fat Thickness (CFAT), post-weaning Average Daily Gain (ADG), and Calving Ease Direct (CED). Carcass value determined by carcass weight, quality, and yield grade influencing traits accounts for approximately 75% of the index as principal revenue drivers. Dry Matter Intake (DMI) captures differences in expected costs to the terminal carcass endpoint.

Total Profit Index (TPI): Combining replacement female retention from the herd with carcass endpoint for marketed surplus heifers and all steers, TPI balances both maternal and terminal selection criteria. Because of the challenges faced by commercial cattlemen by the antagonisms in selection for this production scenario, TPI includes the largest and most diverse set of EPDs in the model, including carcass traits as the primary revenue drivers with cow Mature Weight (MWT), Stayability (STAY) and Dry Matter Intake (DMI) as cost drivers.

DVAuction
 www.dvauction.com

Watch & Bid online for FREE!

Can't make the sale?
 Let DVAuction bring the sale to you!
 Busy during the sale?
 Let DVAuction represent your bid!

Visit www.dvauction.com and Register!
 It's as easy as 1, 2, 3...
 1. Create an account at www.dvauction.com under the "create new account" tab
 2. Apply for bidding by clicking "apply for bidding" in the upper left corner of your screen, at least 24 hours prior to the auction
 3. Tune into the sale and make your purchases!

For General Questions Please Contact Our Office:
 (402) 316-5460 or support@dvauction.com

*High Speed Internet Access Required

About the Catalog:

Color
 Black
 Red
 Homozygous Black
 Heterozygous Black

Polled Status
 Polled
 Horned
 Scurred
 Homozygous Polled
 Heterozygous Polled

Breed Makeup
 BA = Balancer
 GV = Gelbvieh
 HB = Hybrid
 50 = % Gelbvieh

LOT #

NAME

Tattoo

Reg#

Color

Polled

DOB:

BA50

SIRE

GRAND SIRE

BW: ET

Adj. WW: ET

GRAND DAM

MATERNAL GRAND SIRE

DAM

MATERNAL GRAND DAM

GE-EPD	CED	BW	WW	YW	MK	CEM
Rank %						
ST	CW	REA	MB	MPI	FPI	TPI
Rank %						

AOD:

Dam Wt:

%BWW:

Udder:

Doc:

Cow Data

AOD = Age of Dam
 Dam Wt = Cow weight 6 weeks after weaning
 %BWW = Percent the dam weaned of her body weight
 DOC = Docility

EPDs

Expected progeny differences. Winter 2025 evaluation provided by the AGA

Sire verified

Dam verified

Homozygous:

If an animal is homozygous for polled or black, you will not have a horned or red calf born out of this sire. If an animal is heterozygous, it carries one allele for either horned/polled or red/black.

Heifer Bulls

If you see a bull with an **H** Rippe Gelbvieh believes it is a heifer bull.

Udder:

The first number is suspension and second references teat size. 9 is ideal. It represents very small teat size and very tight udder suspension. 1 represents very large, ballooned shape teat and a very pendulous suspension.

Doc = Docility:

1 - The bull is content standing alone. 2 - The bull is nervous when standing in a pen alone. 3 - The bull is looking for a hole in the fence when alone. 4 - The bull is looking to chase you out of the pen.

Percent Gelbvieh:

We rounded every bull to the nearest 1/8 in Gelbvieh percentage.

Catalog designed by: Lynn Valentine

BLACK BALANCER®

The pride and joy of our program is raising elite Balancer bulls. We specialize in raising F1 balancer bulls which allow our customers to maximize heterosis. You will see many ET bulls in this offering in addition to some of the newest Angus sires in the breed represented. Some of those Angus sires include: Bedrock, Rise Above, Commerce, Dynamic, Top Gun, North Star, Armstrong, Architect and Voyage. In addition, our new Balancer sires include Promise Land who was the high seller 2 years ago at Thorstenson's and Royalty who sold in our sale and has been selling semen across the country. The average percentile ran is top 35% Calving Ease, 15% Weaning Weight, 10% Yearling Weight, 15% Carcass Weight, 15% Marbling, 25% MPI, 15% FPI, 20% TPI. We have an elite set of Balancer bulls ready for your program. Lots 1 through 18 are Age Advantage bulls. These bulls are 18 months old, and they are ready to cover a large set of cows.

**LOT
A**

PICK OF SPRING BORN 2025 BALANCER OPEN HEIFERS

You will have the opportunity to pick from what started at 114 open heifer calves with 14 being right from the heart of our ET program. These are siblings to the bulls selling and could be full siblings. Some of the sires represented include; Royalty, Commerce, Rise Above, North Star, Man N Black, Top Gun, Promise Land, Bedrock plus many more. These are the first Bedrock Balancer heifers being offered for sale in the US.

Pick must be made by April 15th.

Complete listing of the top heifers available for Lot A pick at www.rippengelbvieh.com

**LOT
1**

4521M Homo Black Homo Polled
Reg# AMGV1616984 DOB: 8/10/2024 BA50

✓ HOFFMAN STAGECOACH 1908
✓ STELLPFLUG HOFFMAN RISEABOVE
HOFFMAN 3210 RITA LADY 0256

BW: 72
Adj. WW: 701

✓ DBRG MR DESPERADO 0085H
✓ DBRG MS DESPERADO 2527K
DBRG MS PRIDE 5515C

GE-EPD	CED	BW	WW	YW	MK	CEM
Y	16	0.1	94	136	23	8
Rank %	20	65	3	15	60	25
ST	CW	REA	MB	MPI	FPI	TPI
16.1	70	0.77	0.3	127.5	170.32	202.69
30	2	10	70	4	10	15

AOD: 2 Dam Wt: 1289 %BWW: 54.38% Udder: 89 Doc: 1

Rise Above bull out of a Desperado female that is very sound structured and attractive with elite growth and performance. These Rise Above steers are phenomenal cattle to feed. In fact, we turned in the very first carcass data to the Angus Association from Rise Above. Top 20% CE, 3% WW, 15% YW, 2% CW, 10% REA, 4% MPI, 10% FPI, 15% TPI.



LOT 1 • 4521M

**LOT
2**

4510M Homo Black Scurred Polled
Reg# AMGV1616976 DOB: 8/7/2024 BA38

✓ G A R SUNBEAM
✓ CONNEALY COMMERCE
AVIRA OF CONANGA 814R

BW: 52
Adj. WW: 712

✓ DCH MR MAYOR G443
✓ DBRG MR MAYOR 1576J
DBRG MS NEVADA 6546D ET

GE-EPD	CED	BW	WW	YW	MK	CEM
Y	28	-5	84	143	28	14
Rank %	1	2	15	10	15	1
ST	CW	REA	MB	MPI	FPI	TPI
14.4	36	0.31	0.72	144.79	149.53	217.23
65	65	85	4	1	20	10

AOD: 3 Dam Wt: 1273 %BWW: 55.93% Udder: 99 Doc: 1

Calving ease specialist that is ready for a large group of heifers. This bull is very deep bodied and moves with ease. Our industry needs more of the udders on these Commerce females. You will also find a lot of these top bulls going back to Mayor daughters. They are rising to the top of our herd. Of all the Balancer bulls to sell this season this bull is the 9th highest for MPI in the breed. Top 1% CE, 2% BW, 15% WW, 10% YW, 4% MB, 1% MPI, 20% FPI, 10% TPI.

**LOT
3**

4519M Homo Black Homo Polled
Reg# AMGV1618256 DOB: 8/10/2024 BA50

✓ G A R SUNBEAM
✓ CONNEALY COMMERCE
AVIRA OF CONANGA 814R

BW: ET
Adj. WW: ET

✓ HYEK BLACK IMPACT 3960N
✓ DBRG MR BLK IMPACT 2100Z ET
DBRG FOXI ROXI 8N

GE-EPD	CED	BW	WW	YW	MK	CEM
Y	12	3	101	163	21	6
Rank %	55	>95	1	1	75	65
ST	CW	REA	MB	MPI	FPI	TPI
12	60	0.83	0.45	112.57	163.89	179.81
90	10	5	35	30	10	30

AOD: 12 Dam Wt: ET %BWW: ET Udder: ET Doc: 1

The Dam of this bull is also the Dam of Twister and 0247H, both AI bulls. We have registered 50 calves out of this cow and she was a very prominent donor for our program for many years. We finally sold her at 12 years old. That cow combined with Commerce will leave you with a set of females that will last a long time. This bull is the 48th highest Balancer bull in the breed for weaning weight to sell this sale season. Top 1% WW, 1% YW, 10% CW, 5% REA, 30% MPI, 10% FPI, 30% TPI.

LOT
4

4528M Homo Black Homo Polled
Reg# AMGV1616988 DOB: 8/11/2024 BA50

✓ HOFFMAN STAGECOACH 1908
STELLPFLUG HOFFMAN RISEABOVE
HOFFMAN 3210 RITA LADY 0256

BW: 89
Adj. WW: 697

LWHF PURE-PRIDE 564Z
DBRG MS PRIDE 5515C
DBRG MISS 746T ET

GE-EPD	CED	BW	WW	YW	MK	CEM
Y	12	1.5	99	150	24	6
Rank %	55	90	1	4	50	65
ST	CW	REA	MB	MPI	FPI	TPI
13.8	58	0.76	0.32	120.62	143.87	159.17
65	10	10	65	15	25	50

AOD: 9 Dam Wt: 1296 %BWW: 53.78% Udder: 78 Doc: 3

This bull is out of a 9 year old cow that weaned this bull at 54% of her body weight. How many programs actually monitor cow weight and put it in their catalog? This sound structured bull will add growth and performance to anyone's calf crop. This bull is the 82nd highest Balancer bull in the breed for weaning weight to sell this sale season. He ranks in the top 1% WW, 4% YW, 10% CW, 10% REA, 15% MPI, 25% FPI.

DONOR 8167F

This cow is one of our very top young donors. She traces back to the dam of Nevada and is out of our donor 560C. She is out of an outcross sire in Twister and there is no semen in the country left on him. Not only do we feel she is a special cow, but our customers do also. We have sold 30 bulls over the past 4 years for a gross of \$268,250 with an average of \$8,942. She is paid for, and her sons will be as profitable for you as she was for Rippe Gelbvieh. She has several sons in this year's sale. Buy with confidence.

LOT
5

4530M Homo Black Homo Polled
Reg# AMGV1618255 DOB: 8/11/2024 BA50

✓ DEER VALLEY GROWTH FUND
B A R DYNAMIC
B A R BLACKCAP 7235-B0048

BW: ET
Adj. WW: ET

✓ DBRG TWISTER 451B
DBRG MS TWISTER 8167F ET
DBRG MS EXCLUSIVE 560C ET

GE-EPD	CED	BW	WW	YW	MK	CEM
Y	20	-4.6	81	127	24	11
Rank %	3	2	25	25	50	3
ST	CW	REA	MB	MPI	FPI	TPI
13.2	31	0.37	0.67	132.86	148.91	210.45
75	80	80	10	2	20	10

AOD: 6 Dam Wt: ET %BWW: ET Udder: ET Doc: 1

8167 has been a great donor for our program for many years. She is highlighted below. We have registered 121 progeny out of her. This Dynamic bull is just that as he is sound structured, thick made, and attractive. Heifer bull ready to for a large set of heifers. Top 3% CE, 2% BW, 25% WW, 25% YW, 10% MB, 2% MPI, 20% FPI, 10% TPI.



MS TWISTER 8167F
DAM OF LOT 5

LOT
6

4532M Homo Black Homo Polled
Reg# AMGV1616991 DOB: 8/12/2024 BA50

✓ CONNEALY EMERALD
TAU OZ 77K ET
TAU MS SAMMY 385A

BW: 89
Adj. WW: 703

✓ MUSGRAVE 316 STUNNER
DBRG MS STUNNER 9512G
DBRG MS PRIDE 5515C

GE-EPD	CED	BW	WW	YW	MK	CEM
Y	10	-0.4	76	125	24	4
Rank %	75	55	45	30	50	90
ST	CW	REA	MB	MPI	FPI	TPI
17.4	47	0.68	0.5	95.55	142.58	169.01
20	30	20	25	80	30	40

AOD: 5 Dam Wt: 1192 %BWW: 58.98% Udder: 76 Doc: 1

This bull is out of Oz who we purchased from Taubenheim Gelbvieh, and this is our first set of fall calves out of this bull. The mother of this bull has a 101 nursing ratio on 4 calves. Weaned off at 703 pounds and weaned off his dam at 59% of her body weight. Top 20% ST, 20% REA, 25% MB, 30% FPI.



DYNAMIC
SIRE OF LOT 5

**LOT
7**

4534M Homo Black Homo Polled
Reg# AMGV1616992 DOB: 8/12/2024 BA75

✓ DLW TPG FRONTRUNNER 2510F BW: 82
JKGF ALL AMERICAN J109 Adj. WW: 754
JKGF F109 ET

✓ DBRG MR PAYWEIGHT 710E
DBRG MS 710E 0552H
DBRG MS BLK GRANITE 7312E ET

GE-EPD	CED	BW	WW	YW	MK	CEM
Y	13	-1.7	92	141	26	7
Rank %	45	25	4	10	30	45
ST	CW	REA	MB	MPI	FPI	TPI
13.8	47	0.65	0.33	115.74	125.69	140.43
65	30	25	65	20	50	70

AOD: 4 Dam Wt: 1278 %BWW: 59.00% Udder: 89 Doc: 1

Big frame Age Advantage bull ready for a large set of cows. The mother of this bull has a gorgeous udder and weaned this bull at 59% of her body weight. This bull is long bodied and will add pounds and performance, what the industry is after. Top 4% WW, 10% YW, 30% CW, 20% MPI.



**ALL AMERICAN
SIRE OF LOT 7**

**LOT
8**

4540M Homo Black Homo Polled
Reg# AMGV1617047 DOB: 8/13/2024 BA50

✓ CONNEALY EMERALD BW: 88
TAU OZ 77K ET Adj. WW: 806
TAU MS SAMMY 385A

✓ DEER VALLEY HEDGE FUND
DBRG MS HEDGE FUND 2519K
DBRG MS FH GRANITE 8547F

GE-EPD	CED	BW	WW	YW	MK	CEM
Y	10	1	94	152	30	6
Rank %	75	85	3	3	10	65
ST	CW	REA	MB	MPI	FPI	TPI
18.8	53	0.97	0.37	116.69	143.67	159.56
5	15	2	55	20	25	50

AOD: 2 Dam Wt: 1132 %BWW: 71.20% Udder: 79 Doc: 1

808 pound weaning weight on this stud and he weaned off his dam at 71% of her body weight. Finding cattle that can go into a feedyard and finish at 1600 to 1750 pounds is the key in this cattle business right now and these genetics will do just that. This bull ranks in the top 3% WW, 3% YW, 5% ST, 2% REA, 20% MPI, 25% FPI.

**LOT
9**

4544M Homo Black Homo Polled
Reg# AMGV1617050 DOB: 8/15/2024 BA38

✓ G A R SUNBEAM BW: 72
CONNEALY COMMERCE Adj. WW: 768
AVIRA OF CONANGA 814R

✓ DCH MR MAYOR G443
DBRG MS MAYOR 2567K
DBRG MS GRAND PLAN 5563C

GE-EPD	CED	BW	WW	YW	MK	CEM
Y	20	-2.2	88	138	28	10
Rank %	3	20	10	10	15	10
ST	CW	REA	MB	MPI	FPI	TPI
15.3	56	0.66	0.51	126.69	167	208.16
45	10	20	25	5	10	10

AOD: 2 Dam Wt: 1122 %BWW: 68.45% Udder: 87 Doc: 1

7 for 7 bull meaning he was born in the 70's and weaned off in the 700's. This Commerce son is flat good, as he is deep bodied, sound structured, and complete. Commerce daughters have amazing udders. Look at this EPD spread in this heifer bull. Top 3% CE, 20% BW, 10% WW, 10% YW, 10% CW, 25% MB, 5% MPI, 10% FPI, 10% TPI.



LOT 9 • 4544M

**LOT
10**

4621M Homo Black Homo Polled
Reg# AMGV1622277 DOB: 8/15/2024 BA25

✓ S S ODYSSEY H71 BW:
S S VOYAGE Adj. WW: 805
S S MISS RITA 4P26 P810

DBRG MR WATCHMAN WCR59 8156F
DBRG MS 8156F 2516K
DBRG MS 710E 0552H

GE-EPD	CED	BW	WW	YW	MK	CEM
Y	15	-1.2	94	157	34	11
Rank %	35	35	3	2	1	3
ST	CW	REA	MB	MPI	FPI	TPI
9.3	63	0.96	0.77	116.99	201.36	243.4
>95	4	2	3	20	1	2

AOD: 2 Dam Wt: 1085 %BWW: 74.19% Udder: Doc: 1

We missed getting a birth weight on this bull but it was clear he has plenty of growth weaning at 805 pounds and weaned off his dam at 74% of her body weight. He is a big frame, deep bodied, high performance-oriented bull out of Voyage. In terms of FPI, this bull is 77th highest Balancer bull to sell this sale season. Top 3% WW, 2% YW, 4% CW, 2% REA, 3% MB, 20% MPI, 1% FPI, 2% TPI.

**LOT
11**

4551M Homo Black Homo Polled
Reg# AMGV1617053 DOB: 8/17/2024 BA50

✓ CONNEALY EMERALD BW: 79
TAU OZ 77K ET Adj. WW: 685
TAU MS SAMMY 385A

✓ DBRG MR PAYWEIGHT 710E
DBRG MS 710E 1528J
DBRG MS ALLIED 9502G

GE-EPD	CED	BW	WW	YW	MK	CEM
Y	11	0.8	88	145	28	7
Rank %	65	80	10	10	15	45
ST	CW	REA	MB	MPI	FPI	TPI
15.7	55	0.86	0.36	109.52	143.41	160.6
30	15	4	55	40	30	45

AOD: 3 Dam Wt: 1233 %BWW: 55.56% Udder: 77 Doc: 1

Deep bodied, heavy muscled, and sound structured bull out of Oz. His dam has a nursing ratio of 106 so far in her young career. I think every commercial cattlemen needs to have some Gelbvieh in their herd for Longevity as they are fertile, have great feet and last. This bull ranks in the top 10% WW, 10% YW, 30% ST, 15% CW, 4% REA, 20% FPI.

**LOT
14**

4561M Homo Black Homo Polled
Reg# AMGV1618264 DOB: 8/21/2024 BA50

✓ G A R SUNBEAM BW: ET
CONNEALY COMMERCE Adj. WW: ET
AVIRA OF CONANGA 814R

✓ DBRG TWISTER 451B
DBRG MS TWISTER 8167F ET
DBRG MS EXCLUSIVE 560C ET

GE-EPD	CED	BW	WW	YW	MK	CEM
Y	19	-1.8	87	136	23	9
Rank %	5	25	10	15	60	15
ST	CW	REA	MB	MPI	FPI	TPI
14.5	29	0.68	0.42	124.73	122.37	152.51
65	85	20	45	10	55	55

AOD: 6 Dam Wt: ET %BWW: ET Udder: ET Doc: 1

Heifer bull out of 8167 and Commerce. This combination will make an excellent set of replacement females that will last a long time. Don't overthink the cattle business, it is about a set of females that will last and steers that can get big. This F1 Balancer bull ranks in the top 5% CE, 25% BW, 10% WW, 15% YW, 15% CEM, 20% REA, 10% MPI.

**LOT
15**

4568M Homo Black Homo Polled
Reg# AMGV1617062 DOB: 8/29/2024 BA75

✓ BTBR BTBR SAGUARO 8111F ET BW: 70
ERTL 269K MR SAGUARO 026 Adj. WW: 815
ERTL 026H MISS FX JUSTINE BY B467

✓ DCH MR MAYOR G443
DBRG MS MAYOR 2555K
DBRG MS DESTINATION 9587G

GE-EPD	CED	BW	WW	YW	MK	CEM
Y	23	-3.9	70	121	31	11
Rank %	1	4	70	40	4	3
ST	CW	REA	MB	MPI	FPI	TPI
17.5	30	0.21	0.43	130.13	115.76	170.25
10	80	95	40	3	65	35

AOD: 2 Dam Wt: 1210 %BWW: 67.36% Udder: 89 Doc: 1

Look right here. This bull was born at 70 pounds and weaned off his dam at 815 pounds and 67% of her body weight. Then go look at his video, he is a beef machine that is soggy thick and sound. These Mayor daughters are very productive and have great udders. Top 1% CE, 4% BW, 3% CEM, 10% ST, 3% MPI.

**LOT
12**

4557M Homo Black Homo Polled
Reg# AMGV1617054 DOB: 8/18/2024 BA50

✓ CONNEALY EMERALD BW: 89
TAU OZ 77K ET Adj. WW: 733
TAU MS SAMMY 385A

✓ BALDRIDGE ALTERNATIVE E125
MS ALTERNATIVE 2517K ET
DBRG MS TWISTER 8167F ET

GE-EPD	CED	BW	WW	YW	MK	CEM
Y	10	1	86	138	21	7
Rank %	75	85	15	10	75	45
ST	CW	REA	MB	MPI	FPI	TPI
15.7	34	0.66	0.41	100.47	107.84	119.15
30	70	20	45	70	80	90

AOD: 2 Dam Wt: 1134 %BWW: 64.64% Udder: 89 Doc: 1

Sound structured, deep bodied and flat good are in my notes on this bull. His dam is a full sister to the AI bull Preference that Post Rock Cattle Company purchased from us. She weaned this bull at 65% of her body weight while showcasing a gorgeous udder. This bull ranks in the top 15% WW, 10% YW, 30% ST, 20% REA.



**COMMERCE
SIRE OF LOT 14**



DUANE WITH HIS COWHERD.

**LOT
16**

4584M Homo Black Homo Polled
Reg# AMGV1618274 DOB: 9/10/2024 BA50

✓ G A R SUNBEAM
CONNEALY COMMERCE
AVIRA OF CONANGA 814R

BW: ET
Adj. WW: ET

✓ DBRG TWISTER 451B
DBRG MS TWISTER 8167F ET
DBRG MS EXCLUSIVE 560C ET

GE-EPD	CED	BW	WW	YW	MK	CEM
Y	20	-3.2	80	123	23	7
Rank %	3	10	30	35	60	45
ST	CW	REA	MB	MPI	FPI	TPI
15	34	0.69	0.47	117.13	136.58	169.03
45	70	20	30	20	35	35

AOD: 6 Dam Wt: ET %BWW: ET Udder: ET Doc: 1

ET bull out of 8167 and Commerce. This bull is sound structured, attractive and flat complete. Heifer bull that is ready for a big set of heifers while still having enough growth to produce top end steers. Top 3% CE, 10% BW, 30% WW, 20% REA, 30% MP, 20% MPI.

**LOT
18**

4601M Homo Black Homo Polled
Reg# AMGV1617097 DOB: 9/28/2024 BA50

✓ S S ODYSSEY H71
S S VOYAGE
S S MISS RITA 4P26 P810

BW: 89
Adj. WW: 683

FHG FLYING H MR TRACTION 45B
DBRG MS FH TRACTION 6558D
DBRG MISS 746T ET

GE-EPD	CED	BW	WW	YW	MK	CEM
Y	9	0.9	79	134	28	8
Rank %	85	80	30	15	15	25
ST	CW	REA	MB	MPI	FPI	TPI
13.7	42	0.47	0.63	100.87	132.8	168.19
65	45	60	10	65	40	40

AOD: 8 Dam Wt: 1367 %BWW: 49.96% Udder: 77 Doc: 1.5

I preach about the longevity in these Gelbvieh females. The dam of this bull is still active at 9 years of age, her dam 14, granddam 14, great granddam 12. That means less females you have to keep as replacements and more calves you can sell each year. That is more \$ in your pocket. This bull ranks in the top 30% WW, 15% YW, 25% CEM, 10% MB.



**WHEN YOU COME TO A FORK IN THE ROAD,
CHOOSE RIPPE GENETICS**

**LOT
17**

4596M Homo Black Homo Polled
Reg# AMGV1617095 DOB: 9/26/2024 BA50

✓ S S ODYSSEY H71
S S VOYAGE
S S MISS RITA 4P26 P810

BW: 88
Adj. WW: 690

✓ DBRG TWISTER 451B
DBRG MS TWISTER 9530G
DBRG MS FH TRACTION 6558D

GE-EPD	CED	BW	WW	YW	MK	CEM
Y	12	-1.6	80	130	29	8
Rank %	55	25	30	20	10	25
ST	CW	REA	MB	MPI	FPI	TPI
15.8	41	0.51	0.52	107.97	133.09	166.07
30	45	50	25	45	40	40

AOD: 5 Dam Wt: 1420 %BWW: 48.59% Udder: 67 Doc: 1

These Voyage calves were one of our high selling sire groups last year as they are just problem free cattle. This bull is sound structured and complete. This bull ranks in the top 25% BW, 30% WW, 20% YW, 25% CEM, 30% ST, 25% MB.



**VOYAGE
SIRE OF LOTS 18**

DAMS OF DOMINANCE

Rippe Gelbvieh ranked **#1**
Gelbvieh Breeder for
Dams of Merit in Nebraska

Dam of Merit is a AGA designation for cows that meet selection criteria including early puberty and conception, regular calving intervals, and above average weaning weights on at least three calves. Only 6.2% of the dams in the breed qualify.

**LOT
19**

5021N Homo Black Homo Polled
Reg# AMGV1630777 DOB: 1/14/2025 BA50

✓ HOFFMAN STAGECOACH 1908 BW: 71
STELLPFLUG HOFFMAN RISEABOVE Adj. WW: 744
HOFFMAN 3210 RITA LADY 0256

✓ DCH MR MAYOR G443
DBRG MS MAYOR 3269L
DBRG MS DESTINATION 967G ET

GE-EPD	CED	BW	WW	YW	MK	CEM
Y	19	-1	91	140	28	8
Rank %	5	40	5	10	15	25
ST	CW	REA	MB	MPI	FPI	TPI
14.7	50	0.44	0.44	137.67	150.42	192.01
45	20	65	40	1	20	20

AOD: 2 Dam Wt: 1150 %BWW: 64.70% Udder: 88 Doc: 1

I love the length of body and added stretch these Rise Above bulls offer and this one exhibit all of that. 7 for 7 bull that ranks in the top of the breed in many EPD categories. He is the 47th highest Balancer bull for MPI to sell this year. He weaned off his dam at 65% of her body weight. He ranks in the top 5% CE, 5% WW, 10% YW, 20% CW, 1% MPI, 20% FPI, 20% TPI.

**LOT
20**

5036N Homo Black Homo Polled
Reg# AMGV1630789 DOB: 1/19/2025 BA38

✓ G A R SUNBEAM BW: 70
CONNEALY COMMERCE Adj. WW: 691
AVIRA OF CONANGA 814R

✓ DCH MR MAYOR G443
DBRG MS MAYOR 3005L
DBRG MS 710E 1376J

GE-EPD	CED	BW	WW	YW	MK	CEM
Y	19	-2.1	80	136	23	9
Rank %	5	20	30	15	60	15
ST	CW	REA	MB	MPI	FPI	TPI
12.7	58	0.82	0.52	117.06	176.62	220.75
75	10	10	25	20	5	10

AOD: 2 Dam Wt: 1292 %BWW: 53.48% Udder: 88 Doc: 1

Heifer bull out of Commerce combined with Mayor. These will make a set of females that everyone will salivate over. Cattlemen will appreciate this Commerce son for his added muscle and sound structure. Look at how balanced this EPD profile is. He ranks in the top 5% CE, 20% BW, 30% WW, 15% YW, 15% CEM, 10% CW, 10% REA, 25% MB, 20% MPI, 5% FPI, 20% TPI.

**LOT
21**

5037N Homo Black Homo Polled
Reg# AMGV1630790 DOB: 1/19/2025 BA50

✓ CONNEALY EMERALD BW: 72
TAU OZ 77K ET Adj. WW: 776
TAU MS SAMMY 385A

✓ DEER VALLEY HEDGE FUND
DBRG MS HEDGE FUND 3080L
DBRG MS CHEIF JUSTICE 0219H

GE-EPD	CED	BW	WW	YW	MK	CEM
Y	12	-2.3	70	118	29	7
Rank %	55	15	70	45	10	45
ST	CW	REA	MB	MPI	FPI	TPI
21	46	0.6	0.43	97.56	139.87	169.53
1	30	30	40	75	30	35

AOD: 2 Dam Wt: 1334 %BWW: 58.17% Udder: 87 Doc: 1

7 for 7 bull that was born in the 70's and weaned off in the 700's and weaned off his dam at 58% of her body weight. He is deep bodied, heavy muscled, and sound structured. Top 15% BW, 1% ST, 30% CW, 30% REA, 30% FPI.



**RISE ABOVE
SIRE OF LOT 19**



LOT 20 • 5036N

**LOT
22**

5038N Homo Black Homo Polled
Reg# AMGV1630791 DOB: 1/19/2025 BA50

✓ BALDRIDGE ALTERNATIVE E125 BW: 86
DBRG PREFERENCE 2141K ET Adj. WW: 840
DBRG MS TWISTER 8167F ET

✓ DMR MR MOUNTAIN RAIN 1095J
DBRG MS MOUNTAIN RAIN 3240L
DBRG MS 532C 7159E

GE-EPD	CED	BW	WW	YW	MK	CEM
Y	11	0.7	90	138	27	7
Rank %	65	80	5	10	20	45
ST	CW	REA	MB	MPI	FPI	TPI
14.2	36	0.56	0.57	112.15	130.92	155.29
65	65	40	15	30	45	55

AOD: 2 Dam Wt: 1448 %BWW: 58.01% Udder: 88 Doc: 1

This bull smashed the scaled at 840 pounds and is the 2nd heaviest WW bull in the sale. When you see this bull in person he exhibits that performance as he is a big framed, high performing and heavy muscled. This bull is out of 3 generations of bulls we have sold on our sale and used back in our AI program. Top 5% WW, 10% YW, 15% MB, 30% MPI.

**LOT
23**

5042N Homo Black Homo Polled
Reg# AMGV1630794 DOB: 1/20/2025 BA25

✓ G A R SUNBEAM
✓ CONNEALY COMMERCE
AVIRA OF CONANGA 814R

BW: 78
Adj. WW: 793

✓ TEHAMA TAHOE B767
✓ DBRG MS TAHOE 3086L
DBRG MISS TWISTER 712E

GE-EPD	CED	BW	WW	YW	MK	CEM
Y	23	-2.5	94	156	24	9
Rank %	1	15	3	2	50	15
ST	CW	REA	MB	MPI	FPI	TPI
15.7	50	0.61	0.61	143.71	165.6	219.83
30	20	30	15	1	10	10

AOD: 2 Dam Wt: 1224 %BWW: 64.79% Udder: 88 Doc: 1

Commerce son that was a couple of snacks away from 800 pounds at weaning. When you walk into the pen, he is easy to find as he might be the deepest bodied and one of the more attractive bulls in the pen. Look at his EPD profile. He is the 15th highest Balancer bull for MPI to sell this sale season. Top 1% CE, 15% BW, 3% WW, 2% YW, 15% CEM, 30% ST, 20% CW, 15% MB, 1% MPI, 10% FPI, 10% TPI. That took a bit to type out.

**LOT
25**

5044N Homo Black Homo Polled
Reg# AMGV1630796 DOB: 1/20/2025 BA50

✓ S ARCHITECT 9501
✓ S ARMSTRONG
S QUEEN ESSA 7149

BW: 83
Adj. WW: 820

✓ DCH MR MAYOR G443
✓ DBRG MS MAYOR 3122L ET
DBRG MS WATCHMAN 154Y

GE-EPD	CED	BW	WW	YW	MK	CEM
Y	13	-0.7	88	130	28	8
Rank %	45	45	10	20	15	25
ST	CW	REA	MB	MPI	FPI	TPI
15	58	0.47	0.64	126.08	170.34	222.57
45	10	60	10	5	10	10

AOD: 2 Dam Wt: 1213 %BWW: 67.60% Udder: 89 Doc: 1

This Armstrong bull weaned off his dam at 820 pounds. This bull weaned off his dam at 68% of her body weight and she has a gorgeous udder. The granddam is a dam of distinction and she finally left our program at 12 year of age. This bull ranks in the top 10% WW, 20% YW, 25% CEM, 10% CW, 10% MB, 5% MPI, 10% FPI, 10% TPI.

**LOT
26**

5054N Homo Black Homo Polled
Reg# AMGV1630804 DOB: 1/24/2025 BA50

✓ DEER VALLEY HEDGE FUND
✓ DBRG MR ROYALTY 3199L
DBRG MS FRANCHISE 0296H

BW: 69
Adj. WW: 754

✓ DBRG MR PAYWEIGHT 710E
✓ DBRG MS 710E 3248L
DBRG MS PROBITY 8207F ET

GE-EPD	CED	BW	WW	YW	MK	CEM
Y	16	-2.8	68	111	28	9
Rank %	20	10	75	65	15	15
ST	CW	REA	MB	MPI	FPI	TPI
14	32	0.09	0.54	102.36	122	161.68
65	75	>95	20	65	55	45

AOD: 2 Dam Wt: 1246 %BWW: 60.51% Udder: 78 Doc: 1

The sire of this bull was purchased by an astute commercial cattlemen who always sells sale topping calves and they often end up being fed at Roode Feedyard. This heifer bull was born at 69 pounds and weaned at 754 pounds. He ranks in the top 20% CE, 10% BW, 15% CEM, 20% MB.

**LOT
24**

5043N Het Black Homo Polled
Reg# AMGV1630795 DOB: 1/20/2025 BA63

✓ DCSF POST ROCK EASY UPGRADE 83J2
✓ DBRG MR LUCKY 3255L
DBRG MS WATCHMAN 5402C

BW: 70
Adj. WW: 740

✓ STERLING PACIFIC 904
✓ DBRG MS PACIFIC 3231L
DBRG MS PRIDE 6411D

GE-EPD	CED	BW	WW	YW	MK	CEM
Y	13	-1.8	78	125	23	8
Rank %	45	25	35	30	60	25
ST	CW	REA	MB	MPI	FPI	TPI
17.9	32	0.09	0.83	107.89	136.91	190.63
10	75	>95	2	45	35	20

AOD: 2 Dam Wt: 1278 %BWW: 57.90% Udder: 99 Doc: 1

I don't have very many of these Lucky calves this year but the ones I do have are flat good. Do yourself a favor and pull up this bull's video as he is very sound structured and complete. 7 for 7 bull. He is the 97th highest Balancer bull to sell this year for Marbling. He ranks in the top 25% BW, 30% YW, 25% CEM, 10% ST, 2% MB, 20% TPI.



LOT 25 • 5044N



**ARMSTRONG
SIRE OF LOT 25**

**LOT
27**

5055N Homo Black Homo Polled
Reg# AMGV1630805 DOB: 1/24/2025 BA50

✓ SAV RAINFALL 6846 BW: 75
✓ DBRG KINGSTON 2010K Adj. WW: 759
DBRG MS TWISTER 0118H ET

✓ VRT LAZY TV ROCK G501
✓ DBRG MS ROCK 3156L
DBRG MS CAPTAIN 1238J

GE-EPD	CED	BW	WW	YW	MK	CEM
Y	14	-1.7	78	123	30	8
Rank %	35	25	35	35	10	25
ST	CW	REA	MB	MPI	FPI	TPI
8.7	39	0.65	0.62	109.15	146.25	182.18
>95	55	25	10	40	25	25

AOD: 2 Dam Wt: 1183 %BWW: 64.16% Udder: 88 Doc: 1

Last sale season I went to Grund Beef Genetics and these Kingston calves were flat awesome, best sire group there. Take a look at this bull's video and you will understand what I saw. This 7 for 7 bull weaned off his dam at 64% of her body weight. Top 25% BW, 25% CEM, 25% REA, 10% MB, 25% FPI, 25% TPI.



KINGSTON
SIRE OF LOT 27

**LOT
28**

5056N Het Black Homo Polled
Reg# AMGV1630806 DOB: 1/25/2025 BA38

✓ GAR SUNBEAM BW: 76
✓ CONNEALY COMMERCE Adj. WW: 742
AVIRA OF CONANGA 814R

DCH MR MAYOR G443
DBRG MS MAYOR 3018L
DBRG MS PATRIARCH 1035J

GE-EPD	CED	BW	WW	YW	MK	CEM
Y	16	-0.5	90	150	25	10
Rank %	20	50	5	4	40	10
ST	CW	REA	MB	MPI	FPI	TPI
13.3	63	0.61	0.65	114.08	189.12	229.35
75	4	30	10	25	3	4

AOD: 2 Dam Wt: 1255 %BWW: 59.12% Udder: 78 Doc: 1

This bull is flat good and he knows it. He is one of the best bulls phenotypically in the sale. 7 for 7 bull that is very balanced in his EPD profile. Commerce combined with Mayor will make great females. Top 20% CE, 5% WW, 4% YW, 10% CEM, 4% CW, 10% MB, 25% MPI, 3% FPI, 4% TPI.



RISE ABOVE
SIRE OF LOT 29

**LOT
29**

5062N Homo Black Homo Polled
Reg# AMGV1631248 DOB: 2/1/2025 BA38

✓ HOFFMAN STAGECOACH 1908 BW: ET
✓ STELLPFLUG HOFFMAN RISEABOVE Adj. WW: ET
HOFFMAN 3210 RITA LADY 0256

✓ VRT LAZY TV WATCHMAN W021
✓ DBRG MS WATCHMAN 5402C
DBRG MS ASTRO 2309Z ET

GE-EPD	CED	BW	WW	YW	MK	CEM
Y	17	-2.2	88	131	29	8
Rank %	15	20	10	20	10	25
ST	CW	REA	MB	MPI	FPI	TPI
15.2	51	-0.15	0.84	139.21	173.14	248.41
45	20	>95	2	1	10	2

AOD: 10 Dam Wt: ET %BWW: ET Udder: ET Doc: 1

This flush of Rise Above combined with 5402C bulls are flat good. Sometimes with the very best cows you don't realize how great they are until the end of their career. She is a dam of distinction, has a nursing ratio of 106 on 9 calves, with a calving interval of 371 days while being flushed 3 times during that time. She will go down as one of the very best cows to walk on our place. Of all the Balancer bulls to sell this sale season in the breed this bull ranks as the 88th best for Marbling & 30th for MPI. Top 15% CE, 20% BW, 10% WW, 20% YW, 25% CEM, 20% CW, 2% MB, 1% MPI, 10% FPI, 2% TPI.



LOT 29 • 5062N

**LOT
30**

5076N Homo Black Homo Polled
Reg# AMGV1631785 DOB: 2/5/2025 BA50

✓ V A R FIRE POWER
SCHIEFELBEIN TOP GUN 522
FROSTY ELBA 4220

BW: ET
Adj. WW: ET

✓ DCH MR MAYOR G443
MS MAYOR 2050K ET
DBRG MS TWISTER 8167F ET

GE-EPD	CED	BW	WW	YW	MK	CEM
Y	12	-1	83	134	22	8
Rank %	55	40	20	15	70	25
ST	CW	REA	MB	MPI	FPI	TPI
13.4	43	0.44	0.59	106.05	148.87	183.37
75	40	65	15	50	20	25

AOD: 3 Dam Wt: ET %BWW: ET Udder: ET Doc: 1

It is hard to find a bull that adds length and frame while still being deep bodied but Top Gun does just that. This bull is sound structured, calm disposition, and good. Out of a Mayor daughter. Top 20% WW, 15% YW, 25% CEM, 15% MB, 20% FPI, 25% TPI.

**LOT 30 • 5076N****LOT
31**

5079N Homo Black Homo Polled
Reg# AMGV1631280 DOB: 2/6/2025 BA50

✓ B A R DYNAMIC
DEER VALLEY GROWTH FUND
B A R BLACKCAP 7235-B0048

BW: ET
Adj. WW: ET

✓ DCH MR TWISTER 451B
MS TWISTER 8167F ET
DBRG MS EXCLUSIVE 560C ET

GE-EPD	CED	BW	WW	YW	MK	CEM
Y	21	-4.6	84	132	24	11
Rank %	2	2	15	20	50	3
ST	CW	REA	MB	MPI	FPI	TPI
14.1	38	0.6	0.58	131.85	159.38	211.42
65	55	30	15	2	15	10

AOD: 7 Dam Wt: ET %BWW: ET Udder: ET Doc: 1

Dynamic son out of our donor 8167. Below Lot 5, I wrote about 8167. Extreme calving ease bull while still offering top end growth. We took a lot of the guesswork out of selecting bulls as most of this entire sale is Homo Black and Homo Polled. Top 2% CE, 2% BW, 15% WW, 20% YW, 3% CEM, 30% REA, 15% MB, 2% MPI, 15% FPI, 10% TPI. Wow!

**LOT
32**

5083N Het Black Homo Polled
Reg# AMGV1631250 DOB: 2/6/2025 BA38

✓ STELLPFLUG HOFFMAN RISEABOVE
HOFFMAN STAGECOACH 1908
HOFFMAN 3210 RITA LADY 0256

BW: ET
Adj. WW: ET

✓ DCH MR TWISTER 451B
MS TWISTER 8167F ET
DBRG MS EXCLUSIVE 560C ET

GE-EPD	CED	BW	WW	YW	MK	CEM
Y	16	-1	95	137	29	8
Rank %	20	40	2	15	10	25
ST	CW	REA	MB	MPI	FPI	TPI
12.3	59	0.4	0.85	137.05	204.54	271.17
90	10	70	1	1	1	1

AOD: 10 Dam Wt: ET %BWW: ET Udder: ET Doc: 1

Genetically this bull is special. Phenotypically he is big framed, long bodied, heavy muscled, and sound structured. This was a special flush of bulls and I talked about the dam on Lot 29. Listen to this- Out of all the Balancer bulls to sell this sale season in the breed this bull is the 80th for Marbling, 56th for MPI, 55th for FPI, 61st for TPI. He is one of 4 bulls in the breed that is at least 130 for MPI, 204 for FPI, and 270 for TPI. Top 20% CE, 2% WW, 15% YW, 25% CEM, 10% CW, 1% MB, 1% MPI, 1% FPI, 1% TPI.

**LOT 32 • 5083N****LOT
33**

5093N Homo Black Homo Polled
Reg# AMGV1630815 DOB: 2/7/2025 BA50

✓ DCH MR TWISTER 451B
BALDRIDGE ALTERNATIVE E125
MR BLACKSMITH 2148K
DBRG MS TWISTER 8167F ET

BW: 74
Adj. WW: 732

✓ DCH MR TWISTER 451B
DEER VALLEY HEDGE FUND
MS HEDGE FUND 3038L ET
DBRG MS EXCLUSIVE 560C ET

GE-EPD	CED	BW	WW	YW	MK	CEM
Y	11	1.2	86	144	25	8
Rank %	65	85	15	10	40	25
ST	CW	REA	MB	MPI	FPI	TPI
20.2	40	0.32	0.5	117.56	130.21	166.46
3	50	85	25	20	45	40

AOD: 2 Dam Wt: 1206 %BWW: 60.70% Udder: 78 Doc: 1

Soggy, deep bodied, sound structured, and complete describe this bull. We double bred the great cow family in 560C in this bull's pedigree who was a donor for us for years. This heifer bull weaned at 61% of his dam's body weight. 7 for 7 bull. Top 15% WW, 10% YW, 25% CEM, 3% ST, 25% MB, 20% MPI.

**LOT
34**

5100N Homo Black Homo Polled
Reg# AMGV1630817 DOB: 2/8/2025 BA50

✓ V A R FIRE POWER
SCHIEFELBEIN TOP GUN 522
FROSTY ELBA 4220

BW: 83
Adj. WW: 796

✓ DCH MR MAYOR G443
DBRG MS G443 1194J
DBRG MS TWISTER 878F ET

GE-EPD	CED	BW	WW	YW	MK	CEM
Y	11	-2.1	91	153	28	7
Rank %	65	20	5	3	15	45
ST	CW	REA	MB	MPI	FPI	TPI
17.7	59	0.38	0.64	115.35	180.35	220.57
10	10	75	10	20	4	10

AOD: 4 Dam Wt: 1318 %BWW: 60.39% Udder: 88 Doc: 1

Big framed, high performing, heavy muscled Top Gun son that will sire sale topping steers. He weaned off his dam at 796 pounds. Make sure and feed out this bulls calves, preferably at Roode Feedyard. Top 20% BW, 5% WW, 3% YW, 10% ST, 10% CW, 10% MB, 20% MPI, 4% FPI, 10% TPI.

**LOT
35**

5118N Homo Black Homo Polled
Reg# AMGV1631253 DOB: 2/8/2025 BA38

✓ HOFFMAN STAGECOACH 1908
STELLPLUG HOFFMAN RISEABOVE
HOFFMAN 3210 RITA LADY 0256

BW: ET
Adj. WW: ET

✓ VRT LAZY TV WATCHMAN W021
DBRG MS WATCHMAN 5402C
DBRG MS ASTRO 2309Z ET

GE-EPD	CED	BW	WW	YW	MK	CEM
Y	14	-1.8	92	134	29	8
Rank %	35	25	4	15	10	25
ST	CW	REA	MB	MPI	FPI	TPI
13.9	64	0.36	0.64	126.05	190.97	240.72
65	4	80	10	5	2	3

AOD: 10 Dam Wt: ET %BWW: ET Udder: ET Doc: 2

5402C and Rise above ET bull. I talked about the cow a lot in Lot 29. This one might be the best one phenotypically. He is long bodied, moves like a cat, and is very high performing. This is a special flush of bulls that will make great females and produce top end steers. Top 4% WW, 15% YW, 25% CEM, 4% CW, 10% MB, 5% MPI, 2% FPI, 3% TPI.

**LOT
37**

5125N Homo Black Homo Polled
Reg# AMGV1631281 DOB: 2/9/2025 BA50

✓ B A R DYNAMIC
B A R BLACKCAP 7235-B0048

BW: ET
Adj. WW: ET

✓ DCH MR MAYOR G443
DBRG MS TWISTER 8167F ET
DBRG MS EXCLUSIVE 560C ET

GE-EPD	CED	BW	WW	YW	MK	CEM
Y	19	-4.3	80	126	24	9
Rank %	5	3	30	30	50	15
ST	CW	REA	MB	MPI	FPI	TPI
13.8	23	0.29	0.67	126.89	132.28	184.74
65	95	90	10	5	40	25

AOD: 7 Dam Wt: ET %BWW: ET Udder: ET Doc: 1

Heifer bull out of our great donor 8167. Most heifer bulls rank at the bottom of the breed for growth, not this dude. He is a more moderately framed bull that is sound structured and thick made. Top 5% CE, 3% BW, 30% WW, 30% YW, 15% CEM, 10% MB, 5% MPI, 25% TPI.

**LOT 35 • 5118N****LOT
36**

5123N Homo Black Homo Polled
Reg# AMGV1632265 DOB: 2/9/2025 BA50

✓ ELLINGSON PROLIFIC
BOYD BEDROCK
SITZ SHAUNA 220H

BW: 83
Adj. WW: 744

✓ WFA FLYING H GRANITE 7Z
DBRG MS FH GRANITE 8318F
DBRG MS PRIDE 6411D

GE-EPD	CED	BW	WW	YW	MK	CEM
Y	15	-2.7	82	131	26	9
Rank %	25	15	20	20	30	15
ST	CW	REA	MB	MPI	FPI	TPI
14.1	67	0.53	0.72		196.75	
65	2	45	4		2	

AOD: 7 Dam Wt: 1526 %BWW: 48.75% Udder: 77 Doc: 1

These Bedrock sons are an exciting new sire group. I had the privilege of seeing the Dam of Bedrock in person and she is one of the best Angus cows in the breed. It is disappointing at the time of printing this catalog these Bedrock sons don't have MPI or TPI but should by sale time and they will rank high. This bull is very sound and thick. Out of all the Balancer bulls in the breed to sell this sale season he ranks 81st for FPI. Look at his EPD profile. Top 25% CE, 15% BW, 20% WW, 20% YW, 15% CEM, 2% CW, 4% MB, 2% FPI.

**LOT 36 • 5123N**

**LOT
38**

5135N Homo Black Homo Polled
Reg# AMGV1630831 DOB: 2/10/2025 BA50

✓ ERTL BTBR BTBR SAGUARO 8111F ET BW: 81
ERTL 269K MR SAGUARO 026 Adj. WW: 754
ERTL 026H MISS FX JUSTINE BY B467

✓ DBRG DEER VALLEY GROWTH FUND
DBRG MS GROWTH FUND 3088L ET
DBRG MS TWISTER 8167F ET

GE-EPD	CED	BW	WW	YW	MK	CEM
Y	14	-2	71	126	26	9
Rank %	35	20	65	30	30	15
ST	CW	REA	MB	MPI	FPI	TPI
11.9	45	0.31	0.46	97.31	142.09	173.54
90	35	85	35	80	30	35

AOD: 2 Dam Wt: 1075 %BWW: 70.14% Udder: 78 Doc: 1

This bull weaned at 754 pounds and 70% of his dam's body weight. That was not a typo. 8167 cattle are efficient. He is a moderately framed, sound structured bull that will work on heifers. Top 20% BW, 30% YW, 15% CEM, 35% MB, 20% FPI.

**LOT
40**

5139N Homo Black Homo Polled
Reg# AMGV1630835 DOB: 2/11/2025 BA25

✓ VAR FIRE POWER BW: 93
SCHIEFELBEIN TOP GUN 522 Adj. WW: 756
FROSTY ELBA 4220

✓ DBRG KG JUSTIFIED 3023
DBRG MS KG JUSTIFIED1040J
DBRG MS REVOLUTION 9294G

GE-EPD	CED	BW	WW	YW	MK	CEM
Y	9	1.6	88	143	24	7
Rank %	85	90	10	10	50	45
ST	CW	REA	MB	MPI	FPI	TPI
18.1	68	0.76	0.81	103.2	200.38	244.56
10	2	10	2	60	1	2

AOD: 4 Dam Wt: 1294 %BWW: 58.42% Udder: 87 Doc: 1

These Justified females have been really good cows for us. This bull is a beast as he is deep bodied and heavy muscled. I think all cattlemen will appreciate the sheer mass and dimension in this bull. He weaned off his dam at 756 pounds and 58% of her body weight. Out of all the Balancer bulls to sell in the breed this year he ranks 80th for FPI. Top 10% WW, 10% YW, 2% CW, 2% MB, 1% FPI, 2% TPI.

**LOT
41**

5143N Homo Black Homo Polled
Reg# AMGV1637575 DOB: 2/11/2025 BA50

✓ BEAR SQUARE B TRUE NORTH 8052 BW: ET
MTN NORTH STAR Adj. WW: ET
BEAR MTN FOREVER LADY 0579

✓ DBRG TWISTER 451B
DBRG MS TWISTER 9129G ET
BTBR MS BLACK CROSS 6044

GE-EPD	CED	BW	WW	YW	MK	CEM
Y	20	-3.4	76	129	30	9
Rank %	3	10	45	25	10	15
ST	CW	REA	MB	MPI	FPI	TPI
14.6	27	0.59	0.4	132.25	114.52	161.38
45	90	35	45	2	70	45

AOD: 6 Dam Wt: ET %BWW: ET Udder: ET Doc: 1

North Star son that is heavy muscled and thick. The donor dam of this bull has an average nursing ratio of 110 on 5 calves with a calving interval of 368 days while being flushed. Take a hard look at this heifer bull and keep the daughters out of this bull. Top 3% CE, 10% BW, 25% YW, 15% CEM, 2% MPI.

**LOT
39**

5137N Homo Black Homo Polled
Reg# AMGV1630833 DOB: 2/10/2025 BA50

✓ DBRG BALDRIDGE ALTERNATIVE E125 BW: 84
MR BLACKSMITH 2148K Adj. WW: 752
DBRG MS TWISTER 8167F ET

✓ DBRG MYERS FAIR-N-SQUARE M39
MS FAIR N SQUARE 3048L ET
DBRG MISS TWISTER 706E

GE-EPD	CED	BW	WW	YW	MK	CEM
Y	12	-0.9	88	139	23	7
Rank %	55	40	10	10	60	45
ST	CW	REA	MB	MPI	FPI	TPI
20.6	50	0.54	0.65	118.26	170.16	216.11
1	20	45	10	15	10	10

AOD: 2 Dam Wt: 1366 %BWW: 55.05% Udder: 78 Doc: 1

Moderately framed maternal maker pedigree. He weaned off his dam at 752 pounds and 55% of her body weight. Notice he ranks in the top 1% for Stayability. Top 10% WW, 10% YW, 1% ST, 20% CW, 10% MB, 15% MPI, 10% FPI, 10% TPI.



**TOP GUN
SIRE OF LOT 40**



LOT 41 • 5143N

**LOT
42**

5147N Homo Black Homo Polled
Reg# AMGV1630837 DOB: 2/12/2025 BA63

✓ DBRG MR FRANCHISE 0247H BW: 93
DBRG MR BOLD RULER 3194L Adj. WW: 797
DBRG MS DESTINATION 9159G

✓ G A RASHLAND
DBRG MS ASHLAND 1057J ET
DBRG MISS TWISTER 706E

GE-EPD	CED	BW	WW	YW	MK	CEM
Y	8	1.8	96	154	32	4
Rank %	90	95	2	2	2	90
ST	CW	REA	MB	MPI	FPI	TPI
10.8	63	0.82	0.4	98.36	154.24	154.63
95	4	10	45	75	20	55

AOD: 4 Dam Wt: 1572 %BWW: 50.70% Udder: 77 Doc: 1

This is the only Bold Ruler son in the balancer division but there are many in our Purebreds. He weaned off his dam at 797 pounds. As with all the Bold Ruler bulls they are flat good. Sound structured, deep bodied, and heavy muscled. Top 2% WW, 2% YW, 4% CW, 20% FPI.

**LOT
44**

5164N Homo Black Homo Polled
Reg# AMGV1631278 DOB: 2/12/2025 BA50

✓ G A R SUNBEAM BW: ET
CONNEALY COMMERCE Adj. WW: ET
AVIRA OF CONANGA 814R

✓ DBRG TWISTER 451B
DBRG MS TWISTER 8167F ET
DBRG MS EXCLUSIVE 560C ET

GE-EPD	CED	BW	WW	YW	MK	CEM
Y	22	-3.3	80	122	23	10
Rank %	1	10	30	35	60	10
ST	CW	REA	MB	MPI	FPI	TPI
16.9	32	0.57	0.47	130.57	135.68	183.47
20	75	40	30	3	35	25

AOD: 7 Dam Wt: ET %BWW: ET Udder: ET Doc: 1

Heifer bull out of Commerce. Commerce is one of the best Angus bulls we have used on Gelbvieh in a long time. This bull is also very docile. Top 1% CE, 10% BW, 30% WW, 35% YW, 10% CEM, 20% ST, 30% MB, 3% MPI, 25% TPI.

**LOT
46**

5181N Homo Black Homo Polled
Reg# AMGV1631786 DOB: 2/14/2025 BA50

✓ BEAR SQUARE B TRUE NORTH 8052 BW: ET
MTN NORTH STAR Adj. WW: ET
BEAR MTN FOREVER LADY 0579

✓ DBRG TWISTER 451B
DBRG MS TWISTER 9129G ET
BTBR MS BLACK CROSS 6044

GE-EPD	CED	BW	WW	YW	MK	CEM
Y	17	-1.4	91	147	30	8
Rank %	15	30	5	5	10	25
ST	CW	REA	MB	MPI	FPI	TPI
15.7	43	0.94	0.44	139.64	145.02	186.75
30	40	2	40	1	25	25

AOD: 6 Dam Wt: ET %BWW: ET Udder: ET Doc: 1

This bull is a meatwagon and is very heavy muscled and docile. I talked about his dam on Lot 41 writeup. Out of all the Balancer bulls in the breed to sell this sale season this bull ranks as the 34th highest for MPI. Top 15% CE, 5% WW, 5% YW, 25% CEM, 20% ST, 2% REA, 1% MPI, 25% FPI, 25% TPI.

**LOT
43**

5158N Homo Black Homo Polled
Reg# AMGV1630846 DOB: 2/12/2025 BA50

✓ V A R FIRE POWER BW: 89
SCHIEFELBEIN TOP GUN 522 Adj. WW: 826
FROSTY ELBA 4220

✓ DBRG MR FRANCHISE 0247H
DBRG MS FRANCHISE 0247H 2106K
DBRG MS PRIDE 8264F

GE-EPD	CED	BW	WW	YW	MK	CEM
Y	7	0.3	94	154	28	5
Rank %	95	70	3	2	15	80
ST	CW	REA	MB	MPI	FPI	TPI
13.6	81	0.78	0.64	98.94	206.51	232.34
65	1	10	10	75	1	4

AOD: 3 Dam Wt: 1304 %BWW: 63.34% Udder: 77 Doc: 1

This is one of the best bulls phenotypically in the sale. He is sound structured, heavy muscled, and deep bodied. Top Gun will sire sale topping feeder cattle. He weaned at 826 pounds. These steers will get to 1700 pounds. Top 3% WW, 2% YW, 1% CW, 10% REA, 10% MB, 1% FPI, 4% TPI.

**LOT
45**

5169N Homo Black Homo Polled
Reg# AMGV1632266 DOB: 2/13/2025 BA50

✓ ELLINGSON PROLIFIC BW: 76
BOYD BEDROCK Adj. WW: 734
SITZ SHAUNA 220H

✓ DBRG TWISTER 451B
DBRG MS TWISTER 878F ET
DBRG MS EXCLUSIVE 560C ET

GE-EPD	CED	BW	WW	YW	MK	CEM
Y	15	-2.8	90	140	26	7
Rank %	35	10	5	10	30	45
ST	CW	REA	MB	MPI	FPI	TPI
16.5	69	0.78	0.66		196.75	
30	2	10	10		2	

AOD: 7 Dam Wt: 1314 %BWW: 55.86% Udder: 56 Doc: 1

7 for 7 bull out of Bedrock. Bedrock is one of the hottest sires in the Angus breed at this time. He combined two of the top programs in Sitz and Ellingson. Out of all the Balancer bulls to sell this sale season in the breed, this bull is the 89th highest for FPI. Top 10% BW, 5% WW, 10% YW, 2% CW, 10% REA, 10% MB, 2% FPI.



LOT 46 • 5181N

**LOT
47**

5182N Homo Black Homo Polled
Reg# AMGV1632267 DOB: 2/14/2025 BA50

✓ ELLINGSON PROLIFIC BW: 81
BOYD BEDROCK Adj. WW: 763
SITZ SHAUNA 220H

✓ DCH MR MAYOR G443
DBRG MS MAYOR 1174J ET
DDGR EMMA 92E ET

GE-EPD	CED	BW	WW	YW	MK	CEM
Y	15	-4	86	134	26	8
Rank %	25	4	15	15	30	25
ST	CW	REA	MB	MPI	FPI	TPI
13.9	70	0.58	0.66		200.49	
65	2	35	10		1	

AOD: 4 Dam Wt: 1332 %BWW: 57.28% Udder: 88 Doc: 1

**LOT 47 • 5182N**

This Bedrock son has been a standout all along for his big and correct foot, sound structure, easy fleshing ability, and muscle. His dam has a gorgeous udder and weaned this bull at 57% of her body weight. She has a 96 BW ratio and a 105 WW ratio on 3 calves with a 379 calving interval and is already a Dam of Merit. She traces back to the great Mandy 32S cow from the Gustin program. This bull has calving ease, growth, and carcass. Out of all the Balancer bulls in the breed to be sold this year, he ranks as the 50th highest for FPI. We feel like this is a no doubt AI sire. Top 25% CE, 4% BW, 15% WW, 15% YW, 25% CEM, 2% CW, 10% MB, 1% FPI.

**LOT
48**

5183N Het Black Homo Polled
Reg# AMGV1630860 DOB: 2/14/2025 BA50

✓ S S ODYSSEY H71 BW: 88
S S VOYAGE Adj. WW: 746
S S MISS RITA 4P26 P810

✓ DCH MR MAYOR G443
DBRG MS MAYOR 1271J
DBRG MS EXCLUSIVE 5125C ET

GE-EPD	CED	BW	WW	YW	MK	CEM
Y	10	-0.6	80	132	33	8
Rank %	75	50	30	20	2	25
ST	CW	REA	MB	MPI	FPI	TPI
15.2	61	0.42	0.61	100.38	165.78	200.2
45	5	70	15	70	10	15

AOD: 4 Dam Wt: 1288 %BWW: 57.92% Udder: 88 Doc: 1

The dam of this bull, another Mayor daughter, has a BW ratio of 95 and a weaning ratio of 107 on 3 calves and she is a Dam of Merit. She weaned this bull at 58% of her body weight. This bull is stout, thick and long bodied. Top 30% WW, 20% YW, 25% CEM, 5% CW, 15% MB, 10% FPI, 15% TPI.

**LOT
49**

5186N Homo Black Homo Polled
Reg# AMGV1632268 DOB: 2/14/2025 BA50

✓ ELLINGSON PROLIFIC BW: 87
BOYD BEDROCK Adj. WW: 679
SITZ SHAUNA 220H

✓ SKF DUNN'S DESTINATION 029E
DBRG MS DESTINATION 0155H ET
DBRG MS EXCLUSIVE 576C ET

GE-EPD	CED	BW	WW	YW	MK	CEM
Y	13	-1.4	91	146	26	8
Rank %	45	30	5	5	30	25
ST	CW	REA	MB	MPI	FPI	TPI
12.3	70	0.42	0.77		200.19	
90	2	70	3		1	

AOD: 5 Dam Wt: 1382 %BWW: 49.13% Udder: 77 Doc: 1

Bedrock son that has over a 200 for FPI. He is a bigger framed and longer bodied bull that will add pounds to your calf crop. Out of all the Balancer bulls in the breed to be sold this year, he ranks as the 66th highest for FPI. Top 30% BW, 5% WW, 5% YW, 25% CEM, 2% CW, 3% MB, 1% FPI.

**LOT
50**

5189N Homo Black Homo Polled
Reg# AMGV1630864 DOB: 2/14/2025 BA50

✓ DEER VALLEY HEDGE FUND BW: 92
DBRG MR ROYALTY 3199L Adj. WW: 802
DBRG MS FRANCHISE 0296H

✓ LD CAPITALIST 316
DBRG MS LD CAPITALIST 0104H ET
DBRG MS EXCLUSIVE 576C ET

GE-EPD	CED	BW	WW	YW	MK	CEM
Y	8	0.2	90	147	30	5
Rank %	90	65	5	5	10	80
ST	CW	REA	MB	MPI	FPI	TPI
8.4	70	0.6	0.42	87.99	168.83	170.45
>95	2	30	45	95	10	35

AOD: 5 Dam Wt: 1438 %BWW: 55.77% Udder: 78 Doc: 1

**LOT 49 • 5186N**

These Royalty calves are good and this one is no different. He could add rib and dimension to any cowherd. If you like your bulls very deep bodied, look right here. He weaned off his dam at 802 pounds. Top 5% WW, 5% YW, 2% CW, 10% FPI.

**LOT
51**

5191N Homo Black Homo Polled
Reg# AMGV1630866 DOB: 2/14/2025 BA75

- ✓ DBRG MR DESPERADO 0085H BW: 83
DBRG MR DESPERADO 2524K Adj. WW: 739
DBRG MS ALUMNI 7231E ET
- ✓ JRI PROBITY 254D28
✓ DBRG MS PROBITY 840F
DBRG MS ROCKMOUNT 647D

GE-EPD	CED	BW	WW	YW	MK	CEM
Y	18	-3.4	69	122	26	7
Rank %	10	10	70	35	30	45
ST	CW	REA	MB	MPI	FPI	TPI
17.2	55	0.71	0.33	115.98	159.37	200.82
20	15	15	65	20	15	15

AOD: 7 Dam Wt: 1454 %BWW: 50.83% Udder: 67 Doc: 1

These Desperado calves are long bodied and have some added frame. This bull exhibits that added frame in a sound structured and complete package while still being a heifer bull. Every year I get phone calls saying I want big frame heifer bulls. This is a standout. Top 10% CE, 10% BW, 20% ST, 15% CW, 15% REA, 20% MPI, 15% FPI, 15% TPI.

**LOT
53**

5204N Homo Black Homo Polled
Reg# AMGV1630876 DOB: 2/15/2025 BA50

- ✓ ELLINGSON BADLANDS 0285 BW: 87
✓ VRT LAZY TV PROMISED LAND L270 Adj. WW: 793
VRT LAZY TV SAMI F328
- ✓ JKG CIVIL WAR E92
✓ DBRG MS CIVIL WAR 1171J
DBRG MS EFFECTIVE 573C ET

GE-EPD	CED	BW	WW	YW	MK	CEM
Y	13	-1.2	83	132	28	8
Rank %	45	35	20	20	15	25
ST	CW	REA	MB	MPI	FPI	TPI
12.2	50	0.56	0.3	101.94	131.85	142.25
90	20	40	70	65	40	65

AOD: 4 Dam Wt: 1369 %BWW: 57.93% Udder: 78 Doc: 1

The Dam of this bull is a Dam of Merit cow with an average weaning ratio of 109. This bull smashed the scales at 793 pounds and weaned at 58% of his dam's weight. Take a look at this bull's video as he is flat good. Top 20% WW, 20% YW, 25% CEM, 20% CW.

**LOT
54**

5208N Homo Black Homo Polled
Reg# AMGV1631792 DOB: 2/16/2025 BA50

- ✓ GB FIREBALL 672 BW: 76
✓ K A KINDRED Adj. WW: 731
K A MISS HIGH WEIGH 862
- ✓ DBRG MR FRANCHISE 0247H
✓ DBRG MS FRANCHISE 0247H 2270K
DBRG MS WATCHMAN 154Y

GE-EPD	CED	BW	WW	YW	MK	CEM
Y	16	-1.6	83	135	30	9
Rank %	20	25	20	15	10	15
ST	CW	REA	MB	MPI	FPI	TPI
15.5	65	0.87	0.92	114.52	207.93	266.73
30	3	4	1	25	1	1

AOD: 3 Dam Wt: 1215 %BWW: 60.16% Udder: 88 Doc: 1

7 for 7 bull with an amazing EPD profile. Out of the ST Genetics AI sire Kindred. Out of all the Balancer bulls in the breed to be sold this year, he ranks as the 44th highest for FPI and 29th for Marbling. Top 20% CE, 25% BW, 20% WW, 15% YW, 15% CEM, 30% ST, 3% CW, 4% REA, 1% MB, 25% MPI, 1% FPI, 1% TPI. WOW!

**LOT
52**

5203N Homo Black Homo Polled
Reg# AMGV1630875 DOB: 2/15/2025 BA50

- ✓ ELLINGSON BADLANDS 0285 BW: 89
✓ VRT LAZY TV PROMISED LAND L270 Adj. WW: 786
VRT LAZY TV SAMI F328
- ✓ CASINO BOMBER N33
✓ DBRG MS CASINO BOMBER 1247J
DBRG MS EXCLUSIVE 560C ET

GE-EPD	CED	BW	WW	YW	MK	CEM
Y	15	-1.7	88	145	30	8
Rank %	25	25	10	10	10	25
ST	CW	REA	MB	MPI	FPI	TPI
16.1	58	0.91	0.48	113.42	164.46	188.64
30	10	3	30	25	10	20

AOD: 4 Dam Wt: 1520 %BWW: 51.71% Udder: 88 Doc: 1

I am excited about my first calf crop of Promise Land bulls. They all have excellent feet and legs which we place a big emphasis on. This bull weaned off his dam at 786 pounds. Top 25% CE, 25% BW, 10% WW, 10% YW, 25% CEM, 30% ST, 10% CW, 3% REA, 30% MB, 25% MPI, 10% FPI, 20% TPI.



PROMISE LAND
SIRE OF LOTS 52 & 53

**LOT
55**

5221N Homo Black Homo Polled
Reg# AMGV1630887 DOB: 2/17/2025 BA50

- ✓ G A R SUNBEAM BW: 90
✓ CONNEALY COMMERCE Adj. WW: 739
AVIRA OF CONANGA 814R
- ✓ CMR PROTEGE 121E ET
✓ DBRG MS PROTEGE 1306J ET
DBRG MISS TWISTER 706E

GE-EPD	CED	BW	WW	YW	MK	CEM
Y	11	1.5	102	165	20	6
Rank %	65	90	1	1	85	65
ST	CW	REA	MB	MPI	FPI	TPI
10.6	67	1.12	0.45	109.73	181.09	193.53
95	2	1	35	40	4	20

AOD: 4 Dam Wt: 1671 %BWW: 44.23% Udder: 88 Doc: 1

Big framed and long bodied bull who screams power and performance. The udders out of these commerce females are flat awesome. Stop by our place and we can show you some. Out of all the Balancer bulls in the breed to be sold this year, he ranks as the 40th highest for Weaning Weight. Top 1% WW, 1% YW, 2% CW, 1% REA, 4% FPI, 20% TPI.

**LOT
56**

5227N Homo Black Homo Polled
Reg# AMGV1630891 DOB: 2/18/2025 BA50

✓ V A R FIRE POWER
SCHIEFELBEIN TOP GUN 522
FROSTY ELBA 4220

BW: 70
Adj. WW: 785

✓ DBRG MR FRANCHISE 0247H
DBRG MS FRANCHISE 0247H 2272K
DBRG MISS TWISTER 706E

GE-EPD	CED	BW	WW	YW	MK	CEM
Y	17	-4.2	79	132	27	9
Rank %	15	3	30	20	20	15
ST	CW	REA	MB	MPI	FPI	TPI
16.2	46	0.49	0.79	115.26	179.83	237.08
30	30	55	2	25	4	3

AOD: 3 Dam Wt: 1248 %BWW: 62.90% Udder: 77 Doc: 1

You have to appreciate these Top Gun bulls for their length of body and growth. This 7 for 7 bull is unique in that he is also a heifer bull. This bull is a very good bull and you need to see his video. Then take a look at this 7 for 7 bull's EPD profile. Top 15% CE, 3% BW, 30% WW, 20% YW, 15% CEM, 30% ST, 30% CW, 2% MB, 25% MPI, 4% FPI, 3% TPI. WOW!

**LOT
58**

5235N Homo Black Homo Polled
Reg# AMGV1632273 DOB: 2/18/2025 BA50

✓ ELLINGSON PROLIFIC
BOYD BEDROCK
SITZ SHAUNA 220H

BW: 90
Adj. WW: 742

✓ SKF DUNN'S DESTINATION 029E
DBRG MS DESTINATION 967G ET
DBRG MS EXCLUSIVE 576C ET

GE-EPD	CED	BW	WW	YW	MK	CEM
Y	14	-1.8	87	141	27	7
Rank %	35	25	10	10	20	45
ST	CW	REA	MB	MPI	FPI	TPI
12.5	62	0.45	0.76		184.06	
90	5	65	3		3	

AOD: 6 Dam Wt: 1349 %BWW: 55.00% Udder: 87 Doc: 1.5

Big framed bedrock son that is long bodied. Last year this cow raised a really good Purebred bull that sold to Post Rock Cattle Company. She is a Dam of Merit cow who has a birth ratio of 98 and a weaning ratio of 106 on 5 calves with a 370 calving interval and weaned this bull at 55% of her body weight. Top 25% CE, 10% WW, 10% YW, 5% CW, 3% MB, 3% FPI.

**LOT
59**

5246N Homo Black Homo Polled
Reg# AMGV1630908 DOB: 2/19/2025 BA25

✓ SYDGEN BLUEPRINT
S ARCHITECT 9501
S BLOSSOM 7514

BW: 85
Adj. WW: 685

✓ BASIN PAYWEIGHT 1682
DBRG MS PAYWEIGHT 7161E ET
DBRG FOXI ROXI 8N

GE-EPD	CED	BW	WW	YW	MK	CEM
Y	13	-1.9	83	126	24	9
Rank %	45	20	20	30	50	15
ST	CW	REA	MB	MPI	FPI	TPI
12.4	58	0.31	0.42	95.15	143.17	162.94
90	10	85	45	85	30	45

AOD: 8 Dam Wt: 1742 %BWW: 39.32% Udder: 88 Doc: 1

Deep bodied and thick made Architect son. Architect is a popular AI sire from Genex who when I saw in person loved the bull. This bull is very docile. Top 20% BW, 20% WW, 30% YW, 15% CEM, 10% CW, 30% FPI.

**LOT
57**

5232N Homo Black Homo Polled
Reg# AMGV1630895 DOB: 2/18/2025 BA75

✓ DBRG MR DESPERADO 0085H
DBRG MR DESPERADO 2524K
DBRG MS ALUMNI 7231E ET

BW: 74
Adj. WW: 677

✓ BTBR BTBR NEVADA 1170Y
DBRG MS NEVADA 7214E ET
DBRG MS CONSENSUS 398A ET

GE-EPD	CED	BW	WW	YW	MK	CEM
Y	23	-4.4	62	99	29	12
Rank %	1	3	95	85	10	1
ST	CW	REA	MB	MPI	FPI	TPI
14.6	20	0.28	0.63	125.65	119.81	188.2
45	>95	90	10	10	60	20

AOD: 8 Dam Wt: 1366 %BWW: 49.56% Udder: 88 Doc: 1

Sound structured and deep bodied bull is an extreme heifer bull. The mother of this bull is a picture perfect Balancer cow. She is the mother of 9159 and the grandmother of Bold Ruler. This bull is puppy dog tame, sound structured, deep bodied, and complete. Top 1% CE, 3% BW, 1% CEM, 10% MB, 10% MPI, 20% TPI.



BEDROCK
SIRE OF LOT 58



ARCHITECT
SIRE OF LOT 59

**LOT
60**

5256N Homo Black Homo Polled
Reg# AMGV1630917 DOB: 2/21/2025 BA50

✓ DBRG DEER VALLEY HEDGE FUND BW: 73
MR ROYALTY 3199L Adj. WW: 763
DBRG MS FRANCHISE 0296H

✓ DBRG DBRG MR NEVADA 532C
MS 532C 7159E
DBRG MS WATCHMAN 143Y ET

GE-EPD	CED	BW	WW	YW	MK	CEM
Y	22	-3.6	76	122	33	9
Rank %	1	5	45	35	2	15
ST	CW	REA	MB	MPI	FPI	TPI
15.8	26	0.15	1	130.42	157.97	232.09
30	90	>95	1	3	15	4

AOD: 8 Dam Wt: 1516 %BWW: 50.33% Udder: 77 Doc: 1

7 for 7 bull out of Royalty. This bull is packed full of red meat and is very deep bodied and sound structured. You have to really appreciate the depth of body Royalty is putting into his calves. This bull is very good and if a breeder is looking to improve calving ease and marbling, take a hard look at this bull. Out of all the Balancer bulls in the breed to be sold this year, he ranks as the 15th highest for Marbling. Top 1% CE, 5% BW, 15% CEM, 1% MB, 3% MPI, 15% FPI, 4% TPI.



**ROYALTY
SIRE OF LOT 60**

**LOT
61**

5257N Homo Black Homo Polled
Reg# AMGV1630918 DOB: 2/21/2025 BA25

✓ S S ODYSSEY H71 BW: 88
S S VOYAGE Adj. WW: 810
S S MISS RITA 4P26 P810

✓ DBRG CONNEALY EMERALD
MS EMERALD 2147K
DBRG MS TRENDSETTER 2119Z

GE-EPD	CED	BW	WW	YW	MK	CEM
Y	10	-0.6	94	162	28	9
Rank %	75	50	3	1	15	15
ST	CW	REA	MB	MPI	FPI	TPI
11.8	75	0.8	0.86	112.19	219.8	270.23
90	1	10	1	30	1	1

AOD: 3 Dam Wt: 1401 %BWW: 57.82% Udder: 99 Doc: 1

Long bodied bull out of Voyage that weaned at 810 pounds. This bull's dam has a picture perfect udder and weaned this bull at 58% of her body weight. Out of all the Balancer bulls in the breed to be sold this year, he ranks as the 68th highest for Marbling, 20th for FPI, 21st for TPI. A True genetic outlier. Top 3% WW, 1% YW, 15% CEM, 1% CW, 1% MB, 30% MPI, 1% FPI, 1% TPI.

**LOT
62**

5267N Homo Black Homo Polled
Reg# AMGV1631123 DOB: 2/22/2025 BA38

✓ ELLINGSON BADLANDS 0285 BW: 80
VRT LAZY TV PROMISED LAND L270 Adj. WW: 751
VRT LAZY TV SAMI F328

✓ DBRG DEER VALLEY HEDGE FUND
MS HEDGE FUND 2072K
DBRG MS 489B ET 7289E

GE-EPD	CED	BW	WW	YW	MK	CEM
Y	17	-2.4	80	129	33	10
Rank %	15	15	30	25	2	10
ST	CW	REA	MB	MPI	FPI	TPI
19.3	45	0.53	0.63	116.01	162.13	205.48
5	35	45	10	20	15	15

AOD: 3 Dam Wt: 1510 %BWW: 49.74% Udder: 88 Doc: 1

Sound structured bull that is attractive and complete. An outcross pedigree for our current customers. His dam has a gorgeous udder and has a 106 weaning ratio. These Promise Land bulls keep getting better. Top 15% CE, 15% BW, 30% WW, 25% YW, 10% CEM, 3% ST, 10% MB, 20% MPI, 15% FPI, 15% TPI. Wow! Heifer bull.



**MATERNAL BROTHER TO LOT 63
SOLD IN 2025**

**LOT
63**

5269N Homo Black Homo Polled
Reg# AMGV1631125 DOB: 2/23/2025 BA38

✓ ELLINGSON BADLANDS 0285 BW: 79
VRT LAZY TV PROMISED LAND L270 Adj. WW: 774
VRT LAZY TV SAMI F328

✓ DBRG DEER VALLEY HEDGE FUND
MS HEDGE FUND 2308K
DBRG MS 710E 9214G

GE-EPD	CED	BW	WW	YW	MK	CEM
Y	15	-0.5	86	145	33	9
Rank %	25	50	15	10	2	15
ST	CW	REA	MB	MPI	FPI	TPI
14.1	71	0.61	0.54	119.83	192.57	232.93
65	1	30	20	15	2	4

AOD: 3 Dam Wt: 1274 %BWW: 60.75% Udder: 89 Doc: 1

Very sound structured Promise Land bull who has great feet. His dam has a picture perfect udder and has a birth ratio of 95 and a weaning ratio of 113. She is well on her way to being a Dam of Merit cow. 7 for 7 bull. Top 25% CE, 15% WW, 10% YW, 15% CEM, 1% CW, 30% REA, 20% MB, 15% MPI, 2% FPI, 4% TPI.

**LOT
64**

5275N Homo Black Homo Polled
Reg# AMGV1631131 DOB: 2/24/2025 BA50

✓ G A R SUNBEAM
✓ CONNEALY COMMERCE
AVIRA OF CONANGA 814R

BW: 76
Adj. WW: 710

✓ DLW ARAPAHOE 207A
✓ DBRG MS ARAPAHOE 2065K ET
DBRG MR BLK IMPACT 2100Z ET

GE-EPD	CED	BW	WW	YW	MK	CEM
Y	18	1.3	106	166	24	8
Rank %	10	90	1	1	50	25
ST	CW	REA	MB	MPI	FPI	TPI
17.1	49	0.81	0.42	141.91	138.28	165.48
20	25	10	45	1	35	40

AOD: 3 Dam Wt: 1112 %BWW: 63.85% Udder: 99 Doc: 1

Commerce son that is a 7 for 7 bull who goes back to the Dam of Distinction 2100Z. She was the mother of Twister and 0247H, both AI bulls. This is a bull everyone needs to look up later in the sale. Weaned off his dam at 64% of her body weight with a perfect udder. Out of all the Balancer bulls in the breed to be sold this year, he ranks as the 17th highest for Weaning Weight, and the 20th highest for MPI. Top 10% CE, 1% WW, 1% YW, 25% CEM, 20% ST, 25% CW, 1% MPI.

**LOT
66**

5298N Homo Black Homo Polled
Reg# AMGV1635295 DOB: 3/5/2025 BA50

✓ T/D DOC RYAN 049
✓ HERBSTER DESHLER 306
HERBSTER BLACKBIRD 172

BW: 80
Adj. WW: 772

✓ DCH MR MAYOR G443
✓ DBRG MS MAYOR 1411J
DBRG MS FH GRANITE 8431F

GE-EPD	CED	BW	WW	YW	MK	CEM
Y	16	-1.7	100	162	29	11
Rank %	20	25	1	1	10	3
ST	CW	REA	MB	MPI	FPI	TPI
14.6	80	0.42	0.72		215.49	
45	1	70	4		1	

AOD: 4 Dam Wt: 1360 %BWW: 56.76% Udder: 88 Doc: 1

This is our first set of bulls offered out of Deshler. He is another bull that will add pounds to your calf crop weaning off his dam at 772 pounds. Look at the growth EPD's this bull possesses. Out of all the Balancer bulls in the breed to be sold this year, he ranks as the 58th highest for Weaning Weight, and the 28th highest for FPI.

**LOT
68**

5317N Homo Black Homo Polled
Reg# AMGV1631158 DOB: 3/8/2025 BA50

✓ S S ODYSSEY H71
✓ S S VOYAGE
S S MISS RITA 4P26 P810

BW: 80
Adj. WW: 751

✓ DBRG MR DESTINATION 931G
✓ DBRG MS 931G 1075J ET
DBRG MS HILLEX102 584C ET

GE-EPD	CED	BW	WW	YW	MK	CEM
Y	13	-1.1	85	143	29	11
Rank %	45	35	15	10	10	3
ST	CW	REA	MB	MPI	FPI	TPI
12.2	64	0.53	0.64	116.44	178.54	228.55
90	4	45	10	20	5	4

AOD: 4 Dam Wt: 1470 %BWW: 51.09% Udder: 77 Doc: 1

Very attractive and sound structured bull that is flat good. Most all of these balancer bulls are Homo Black and Homo polled. This bull weaned off his dam at 751 pound. Top 15% WW, 10% YW, 3% CEM, 4% CW, 10% MB, 20% MPI, 5% FPI, 4% TPI.

**LOT
65**

5276N Homo Black Homo Polled
Reg# AMGV1631132 DOB: 2/24/2025 BA50

✓ S S ODYSSEY H71
✓ S S VOYAGE
S S MISS RITA 4P26 P810

BW: 80
Adj. WW: 768

✓ DBRG MR FRANCHISE 0247H
✓ DBRG MR FRANCHISE 0247H 2277K
DBRG MS FH TRACTION 6138D

GE-EPD	CED	BW	WW	YW	MK	CEM
Y	10	-0.2	86	142	33	8
Rank %	75	55	15	10	2	25
ST	CW	REA	MB	MPI	FPI	TPI
7.5	63	1	0.45	102.08	162.06	179.98
>95	4	1	35	65	15	30

AOD: 3 Dam Wt: 1219 %BWW: 63.00% Udder: 77 Doc: 1

Bigger framed Voyage son that is sound structured and long bodied. He weaned off his dam at 63% of her body weight. This is a performance-oriented bull who will produce sale topping steers. Top 15% WW, 10% YW, 25% CEM, 4% CW, 1% REA, 15% FPI, 30% TPI.

**LOT
67**

5305N Homo Black Homo Polled
Reg# AMGV1631150 DOB: 3/6/2025 BA50

✓ ELLINGSON BADLANDS 0285
✓ VRT LAZY TV PROMISED LAND L270
VRT LAZY TV SAMI F328

BW: 71
Adj. WW: 703

✓ TAU HOMELAND 56H ET
✓ DBRG MS HOMELAND 2174K
DBRG MS 863U 3297A

GE-EPD	CED	BW	WW	YW	MK	CEM
Y	14	-2.2	69	108	28	9
Rank %	35	20	70	70	15	15
ST	CW	REA	MB	MPI	FPI	TPI
16.5	49	0.75	0.32	106.33	138.37	173.24
30	25	10	65	50	35	35

AOD: 3 Dam Wt: 1388 %BWW: 50.65% Udder: 88 Doc: 2

Calving ease Promise Land bull that is a 7 for 7 bull. Born in the 70's and weaned off in the 700's. His dam has a gorgeous udder. Top 35% CE, 20% BW, 15% CEM, 30% ST, 25% CW, 10% REA.

**LOT
69**

5324N Homo Black Homo Polled
Reg# AMGV1631163 DOB: 3/9/2025 BA50

✓ S S ODYSSEY H71
✓ S S VOYAGE
S S MISS RITA 4P26 P810

BW: 93
Adj. WW: 710

✓ DCH MR MAYOR G443
✓ DBRG MS MAYOR 2048K ET
DBRG MS TWISTER 8167F ET

GE-EPD	CED	BW	WW	YW	MK	CEM
Y	12	-1.4	76	121	29	9
Rank %	55	30	45	40	10	15
ST	CW	REA	MB	MPI	FPI	TPI
12.9	43	0.38	0.93	104.17	179.3	236.89
75	40	75	1	55	4	3

AOD: 3 Dam Wt: 1298 %BWW: 39.49% Udder: 88 Doc: 1

The dam of this bull goes back to our great donor 8167F. This bull should make top end females. Weaned off his dam at 710 pounds. This bull is off the charts for marbling. Out of all the Balancer bulls in the breed to be sold this year, he ranks as the 34th highest for Marbling. Top 30% BW, 15% CEM, 1% MB, 4% FPI, 3% TPI.

**LOT
70**

5326N Homo Black Homo Polled
Reg# AMGV1631286 DOB: 3/9/2025 BA50

✓ B A R DYNAMIC
B A R BLACKCAP 7235-B0048
BW: ET
Adj. WW: ET

✓ DBRG TWISTER 451B
DBRG MS TWISTER 8167F ET
DBRG MS EXCLUSIVE 560C ET

GE-EPD	CED	BW	WW	YW	MK	CEM
Y	19	-3.5	87	135	24	11
Rank %	5	10	10	15	50	3
ST	CW	REA	MB	MPI	FPI	TPI
12.6	35	0.44	0.54	131.64	143.29	191.26
75	65	65	20	2	30	20

AOD: 7 Dam Wt: ET %BWW: ET Udder: ET Doc: 1

Bigtime ET spread bull out of the 8167 donor and Dynamic. This bull is proof you can have top end calving ease combined with top end growth. We always put in a few late embryo's to have some top end genetics at the end of the sale. Top 5% CE, 10% BW, 10% WW, 15% YW, 3% CEM, 20% MB, 2% MPI, 30% FPI, 20% TPI.

**LOT
71**

5342N Homo Black Homo Polled
Reg# AMGV1631171 DOB: 3/11/2025 BA50

✓ DBRG MR CAPTAIN 939G
DBRG MISS TWISTER 708E
BW: 88
Adj. WW: 781

✓ DBRG RIPTIDE 710E 930G
DBRG MS RIPTIDE 2196K
DBRG MS 863U 4141B

GE-EPD	CED	BW	WW	YW	MK	CEM
Y	10	0.4	81	123	27	5
Rank %	75	70	25	35	20	80
ST	CW	REA	MB	MPI	FPI	TPI
13.3	57	0.57	0.56	103.03	168.13	201.26
75	10	40	20	60	10	15

AOD: 3 Dam Wt: 1250 %BWW: 62.48% Udder: 88 Doc: 1

This Captain bull is flat good phenotypically. Very sound structured, deep bodied, and attractive. Duane will say Captain is the best breeder of any bull he has ever used. This bull weaned at a whopping 781 pounds. Top 25% WW, 10% CW, 20% MB, 10% FPI, 15% TPI.

**LOT
73**

5350N Homo Black Homo Polled
Reg# AMGV1631176 DOB: 3/12/2025 BA38

✓ VRT LAZY TV PROMISED LAND L270
VRT LAZY TV SAMI F328
BW: 89
Adj. WW: 841

✓ DBRG MS HEDGE FUND 2330K
DBRG MS PRIDE 9401G

GE-EPD	CED	BW	WW	YW	MK	CEM
Y	11	0.3	89	143	32	6
Rank %	65	70	10	10	2	65
ST	CW	REA	MB	MPI	FPI	TPI
12.8	54	0.85	0.39	105.28	146.62	155.81
75	15	4	50	55	25	50

AOD: 3 Dam Wt: 1514 %BWW: 55.55% Udder: 77 Doc: 1

Heaviest weaning weight bull in the sale right here at 841 pounds. This bull is heavy muscled and flat good. In the cattle business it is all about putting as many pounds on as we can as efficiently as possible. Top 10% WW, 10% YW, 15% CW, 4% REA, 25% FPI.



DYNAMIC SIRE OF LOT 70

**LOT
72**

5344N Homo Black Homo Polled
Reg# AMGV1635297 DOB: 3/11/2025 BA38

✓ T/D DOC RYAN 049
HERBSTER DESHLER 306
HERBSTER BLACKBIRD 172
BW: 75
Adj. WW: 707

✓ DBRG TWISTER 451B
MS TWISTER 0090H
DBRG MS NEVADA 627D

GE-EPD	CED	BW	WW	YW	MK	CEM
Y	17	-1.4	93	160	28	10
Rank %	15	30	3	1	15	10
ST	CW	REA	MB	MPI	FPI	TPI
9.8	64	0.81	0.57		181.19	
>95	4	10	15		4	

AOD: 5 Dam Wt: 1520 %BWW: 46.51% Udder: 77 Doc: 1

7 for 7 bull that is younger in age but good. I bet on sale day this bull looks very good. Look at the EPD strength of this bull. Top 15% CE, 30% BW, 3% WW, 1% YW, 10% CEM, 4% CW, 10% REA, 15% MB, 4% FPI. WOW!



TAKING NEW PAIRS TO WINTER GRASS

**LOT
74**

5352N Homo Black Homo Polled
Reg# AMGV1631293 DOB: 3/12/2025 BA50

✓ S ARCHITECT 9501 BW: ET
S ARMSTRONG Adj. WW: ET
S QUEEN ESSA 7149

✓ DBRG MR DESTINATION 931G
DBRG MS 931G 1073J ET
DBRG MS HILLEX102 584C ET

GE-EPD	CED	BW	WW	YW	MK	CEM
Y	16	-2.2	95	149	30	11
Rank %	20	20	2	4	10	3
ST	CW	REA	MB	MPI	FPI	TPI
11	59	0.31	0.54	139.65	168.74	222.84
95	10	85	20	1	10	10

AOD: 4 Dam Wt: ET %BWW: ET Udder: ET Doc: 1

Late ET bull out of Armstrong. This is where a producer can cheapen up his buy and still get really good genetics. Look at the EPD profile of this bull deep in the sale catalog. Out of all the Balancer bulls in the breed to be sold this year, he ranks as the 31st highest for Maternal Profit Index. Top 20% CE, 20% BW, 2% WW, 4% YW, 3% CEM, 10% CW, 20% MB, 1% MPI, 10% FPI, 10% TPI. Wow!

**LOT
75**

5369N Homo Black Homo Polled
Reg# AMGV1631284 DOB: 3/15/2025 BA50

✓ G A R SUNBEAM BW: ET
CONNEALY COMMERCE Adj. WW: ET
AVIRA OF CONANGA 814R

✓ HYEK BLACK IMPACT 3960N
DBRG MR BLK IMPACT 2100Z ET
DBRG FOXI ROXI 8N

GE-EPD	CED	BW	WW	YW	MK	CEM
Y	12	2.7	99	161	21	6
Rank %	55	>95	1	1	75	65
ST	CW	REA	MB	MPI	FPI	TPI
13.7	64	0.61	0.43	110.94	158.39	174.36
65	4	30	40	35	15	30

AOD: 13 Dam Wt: ET %BWW: ET Udder: ET Doc: 1

One of the very best phenotype bulls in the sale right here. Make sure and look at his video. He is deep bodied, sound structured, and flat good. Commerce combined with the great donor 2100Z who is the mother of Twister is a stellar mating. He is off the charts for growth. Out of all the Balancer bulls in the breed to be sold this year, he ranks as the 94th highest for Weaning Weight. Top 1% WW, 1% YW, 4% CW, 30% REA, 15% FPI.



LOT 43 NURSING HIS DAM



**ARMSTRONG
SIRE OF LOT 74**

**LOT
76**

5383N Homo Black Homo Polled
Reg# AMGV1631192 DOB: 3/19/2025 BA50

✓ ELLINGSON BADLANDS 0285 BW: 79
VRT LAZY TV PROMISED LAND L270 Adj. WW: 698
VRT LAZY TV SAMI F328

✓ POSS RAWHIDE
DBRG MS RAWHIDE 2075K ET
DBRG MS TWISTER 8167F ET

GE-EPD	CED	BW	WW	YW	MK	CEM
Y	14	0.3	82	127	26	9
Rank %	35	70	20	25	30	15
ST	CW	REA	MB	MPI	FPI	TPI
14.8	50	0.75	0.31	107.96	141.4	162.03
45	20	10	70	45	30	45

AOD: 3 Dam Wt: 1394 %BWW: 50.07% Udder: 78 Doc: 1

Youngest balancer bull in the sale. His dam is a ET cow out of the great donor 8167. Homo Polled and Homo Black. He has great feet and is problem free. Top 20% WW, 25% YW, 15% CEM, 20% CW, 10% REA, 30% FPI.

Avg. Birth Weight **80**

Avg. Weaning Weight **752**

98% are Homozygous Polled

94% of Black Bulls are Homozygous Black

38% are Embryo Transferred

48% are Artificially Inseminated

14% are Naturally Serviced

BLACK PUREBRED

We are very excited about this offering of Purebred Gelbvieh bulls. We have made a strong effort to increase both our quality and quantity of Purebred Gelbvieh in our herd. We have several new sires we are introducing. Two years ago we had three very high-end Purebred bulls that sold in our bull sale. We used all three in our program via AI; Bold Ruler, Desperado 2, Lucky. In addition, we purchased the high marbling bull, American Logic. All of these sires are very new and different for the breed. The average percentile rank of our purebred Gelbvieh bull offering is top 25% weaning weight, 25% Maternal Profit Index (MPI), 10% Feeder Profit Index (FPI) and 10% Total Profit Index (TPI). We have an elite set of purebred Gelbvieh bulls ready for your program.



BOLD RULER
SIRE OF LOTS 100, 101, 103, 107,
111 & 112

LOT 100

5005N Homo Black Homo Polled
Reg# AMGV1630764 DOB: 1/4/2025 PB93.8

✓ DBRG MR FRANCHISE 0247H BW: 70
MR BOLD RULER 3194L Adj. WW: 719
DBRG MS DESTINATION 9159G

✓ DCH MR MAYOR G443
DBRG MS MAYOR 3302L
DBRG MS DESTINATION 0283H



GE-EPD	CED	BW	WW	YW	MK	CEM
Y	13	-2.1	79	122	31	5
Rank %	35	10	20	20	2	70
ST	CW	REA	MB	MPI	FPI	TPI
13.4	50	0.59	0.47	107.07	143.72	170.39
85	5	60	10	50	5	10

AOD: 2 Dam Wt: 1250 %BWW: 57.52% Udder: 88 Doc: 1

This bull has always stuck out as he is just massive and deep bodied. He is a 7 for 7 bull that was born at 70 pounds and weaned off at 791. The combination of Mayor and Bold Ruler will leave you with a set of females that has a gorgeous udders. This bull's granddam is a Dam of Merit cow. He ranks in the top 10% BW, 20% WW, 20% YW, 10% CW, 10% MB, 5% FPI.



LOT 100 • 5005N

LOT 101

5026N Homo Black Homo Polled
Reg# AMGV1630780 DOB: 1/15/2025 PB93.8

✓ DBRG MR FRANCHISE 0247H BW: 75
MR BOLD RULER 3194L Adj. WW: 817
DBRG MS DESTINATION 9159G

✓ DCH MR MAYOR G443
DBRG MS MAYOR 3241L
DBRG MS DESTINATION 0151H

GE-EPD	CED	BW	WW	YW	MK	CEM
Y	12	-1.8	83	126	34	5
Rank %	45	15	10	10	1	70
ST	CW	REA	MB	MPI	FPI	TPI
12.5	44	0.44	0.31	104.55	115.86	124.26
95	15	85	30	55	35	60

AOD: 2 Dam Wt: 1280 %BWW: 63.83% Udder: 88 Doc: 1

This bull traces back to our great donor 5402C who is a Dam of Distinction while being flushed. All Fall these Bold Ruler bulls have stuck out. This bull is deep bodied, thick made and flat good. He nursed his dam who has a gorgeous udder and weaned off at 817 pounds and 64% of her body weight. He ranks in the top 15% BW, 10% WW, 10% YW, 15% CW, 30% MB, 25% MPI, 35% FPI.



LOT 101 • 5026N

**LOT
102**

5046N Homo Black Homo Polled
Reg# AMGV1630797 DOB: 1/21/2025 PB93.8

✓ DBRG MR DESPERADO 0085H BW: 73
✓ DBRG MR DESPERADO 2524K Adj. WW: 729
DBRG MS ALUMNI 7231E ET

✓ DCH MR MAYOR G443
✓ DBRG MS MAYOR 3172L ET
DBRG MS WATCHMAN 154Y

GE-EPD	CED	BW	WW	YW	MK	CEM
Y	16	-1.4	73	114	25	8
Rank %	15	20	45	35	30	15
ST	CW	REA	MB	MPI	FPI	TPI
14.8	40	0.41	0.36	120.94	136.67	181.45
60	25	90	20	10	10	5

AOD: 2 Dam Wt: 1200 %BWW: 60.75% Udder: 99 Doc: 1

Big framed and deep bodied describe this Desperado 2 son. He traces back to the 154Y cow who is a Dam of Distinction. His dam has a gorgeous udder and he weaned off at 61% of her body weight. It is not easy to find heifer bulls with this much frame and growth. This bull ranks in the top 15% CE, 20% BW, 25% CW, 20% MB, 10% MPI, 10% FPI, 4% TPI.

**LOT
103**

5050N Homo Black Homo Polled
Reg# AMGV1630801 DOB: 1/23/2025 PB87.5

✓ DBRG MR FRANCHISE 0247H BW: 80
✓ DBRG MR BOLD RULER 3194L Adj. WW: 736
DBRG MS DESTINATION 9159G

✓ DCH MR MAYOR G443
✓ DBRG MS MAYOR 3135L
DBRG MS REVOLUTION 1378J

GE-EPD	CED	BW	WW	YW	MK	CEM
Y	8	1.7	83	123	30	6
Rank %	90	85	10	15	3	50
ST	CW	REA	MB	MPI	FPI	TPI
12.7	61	0.55	0.49	97.91	168.4	192.15
85	1	70	10	80	1	3

AOD: 2 Dam Wt: 1277 %BWW: 57.64% Udder: 77 Doc: 1

This bull has always been one that has caught my eye as well. Bold Ruler crossed with Mayor will leave you with an unbelievable set of females. He weaned off his dam at 58% of her body weight. He is the 20th highest FPI and 44th highest TPI bull to sell this sale season. He ranks in the top 10% WW, 15% YW, 1% CW, 10% MB, 1% FPI, 2% TPI.



**TELESCOPE DAM
DONOR AT RIPPE GELBVIEH**



**DESPERADO 2
SIRE OF LOTS 102 & 106**



LOT 103 • 5050N



BELLEVILLE, KS 66935

Phone: (785) 527-2293 Toll-Free: 1 (800) 536-2293

**LOT
104**

5078N Het Black Homo Polled
Reg# AMGV1630812 DOB: 2/6/2025 PB93.8

✓ SKF DUNN'S EFFERVESCENT 042E BW: 92
✓ SKF DUNN'S CLEVER BUSINESS 054K ET Adj. WW: 787
SKF DUNN'S MISS ELIZA JANE 7E30

✓ DCH MR MAYOR G443
✓ DBRG MS MAYOR 3102L ET
DBRG MS WATCHMAN 154Y

GE-EPD	CED	BW	WW	YW	MK	CEM
Y	7	1.5	85	135	27	5
Rank %	95	85	10	4	15	70
ST	CW	REA	MB	MPI	FPI	TPI
18.3	41	0.51	0.45	103.35	125.39	144.72
20	20	75	10	60	20	30

AOD: 2 Dam Wt: 1129 %BWW: 69.71% Udder: 99 Doc: 1

Last year we sold our first Clever Business sons. It was highlighted by Telescope who sold to Larson Lost River Livestock. This bull is also flat good and weaned off his dam at 70% of her body weight at 787 pounds. This bull traces back to the great 154Y cow who is a Dam of Distinction. He ranks in the top 10% WW, 3% YW, 20% STAY, 25% CW, 10% MB, 25% MPI, 25% FPI, 20% TPI.



LOT 104 • 5078N



**TELESCOPE
HIGH SELLING BULL 2025
SOLD TO LOST RIVER LIVESTOCK**



**CLEVER BUSINESS
SIRE OF LOT 104**

**LOT
105**

5116N Homo Black Homo Polled
Reg# AMGV1631788 DOB: 2/8/2025 PB90.6

✓ DBRG MR DESPERADO 0085H BW: ET
✓ DBRG MR DESPERADO 2524K Adj. WW: ET
DBRG MS ALUMNI 7231E ET

✓ DVE DAVIDSON JACKPOT 74Z
✓ DBRG MS JACKPOT 692D
DBRG MS WATCHMAN 1202Y

GE-EPD	CED	BW	WW	YW	MK	CEM
Y	18	-2.9	62	94	28	9
Rank %	4	4	90	80	10	5
ST	CW	REA	MB	MPI	FPI	TPI
19.9	41	0.35	0.36	118.07	131.2	186.26
5	20	95	20	15	15	4

AOD: 9 Dam Wt: ET %BWW: ET Udder: ET Doc: 1

If you are looking for Purebred Gelbvieh heifer bull, drive your truck to Hubbell, NE and look at this Desperado 2 Son. He is very sound structured, deep bodied, and thick made. His dam is a Dam of Distinction. He is the 45th highest TPI bull to be sold this sale season. He ranks in the top 4% CE, 4% BW, 5% STAY, 20% CW, 20% MB, 5% MPI, 15% FPI, 2% TPI.



LOT 105 • 5116N

LOT 106

5117N Homo Black Homo Polled
Reg# AMGV1631247 DOB: 2/8/2025 PB87.5

✓ DBRG MR DESPERADO 0085H BW: ET
✓ DBRG MR DESPERADO 2524K Adj. WW: ET
DBRG MS ALUMNI 7231E ET

✓ SKF DUNN'S DESTINATION 029E
✓ DBRG MS DESTINATION 9159G
DBRG MS NEVADA 7214E ET

GE-EPD	CED	BW	WW	YW	MK	CEM
Y	14	-2.8	79	130	32	7
Rank %	25	5	20	10	1	30
ST	CW	REA	MB	MPI	FPI	TPI
16	43	0.55	0.35	116.98	122.82	151.65
45	15	70	25	15	25	25

AOD: 6 Dam Wt: ET %BWW: ET Udder: ET Doc: 1

ET bull out of 9159, who is the mother of Bold Ruler. This bull is big framed, stout, and heavy muscled. He has an elite and balanced EPD profile. This will be our last bull offered out of 9159 as she was purchased by Lost River Livestock, Plateau Gelbvieh, & Covington Gelbvieh in the national sale for 28k. This bull ranks in the top 2% CE, 5% BW, 20% WW, 10% YW, 15% CW, 20% MB, 10% MPI, 25% FPI, 15% TPI.

LOT 107

5185N Het Black Homo Polled
Reg# AMGV1630861 DOB: 2/14/2025 BA75

✓ DBRG MR FRANCHISE 0247H BW: 74
✓ DBRG MR BOLD RULER 3194L Adj. WW: 743
DBRG MS DESTINATION 9159G

✓ VRT LAZY TV WATCHMAN W021
✓ DBRG MS WATCHMAN 448B ET
JCB N313

GE-EPD	CED	BW	WW	YW	MK	CEM
Y	18	-2.9	79	120	28	7
Rank %	10	10	30	40	15	45
ST	CW	REA	MB	MPI	FPI	TPI
14.5	49	0.69	0.57	125.38	154.92	203.39
65	25	20	15	10	15	15

AOD: 11 Dam Wt: 1532 %BWW: 48.50% Udder: 77 Doc: 1

This bull should have been in the balancer pen and in that part of the catalog but it was caught too late. He is a 75% Gelbvieh bull out of Bold Ruler. He is deep bodied and thick and flat good. Heifer bull that ranks in the top 10% CE, 10% BW, 25% CW, 20% RE, 15% MB, 5% MPI, 15% FPI, 10% TPI.

LOT 108

5244N Homo Black Homo Polled
Reg# AMGV1630906 DOB: 2/19/2025 PB93.8

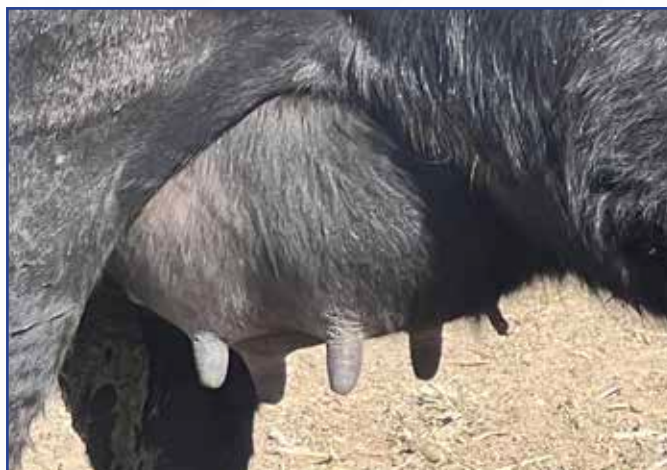
✓ DLW TPG FRONTRUNNER 2510F BW: 82
✓ JKGF ALL AMERICAN J109 Adj. WW: 704
JKGF F109 ET

✓ SKF DUNN'S DESTINATION 029E
✓ DBRG MS DESTINATION 0151H
DBRG MS WATCHMAN 5402C

GE-EPD	CED	BW	WW	YW	MK	CEM
Y	18	-2.3	71	114	26	9
Rank %	4	10	55	35	20	5
ST	CW	REA	MB	MPI	FPI	TPI
16.8	33	0.51	0.67	121.39	147.8	208
30	50	75	1	10	4	1

AOD: 5 Dam Wt: 1290 %BWW: 54.57% Udder: 78 Doc: 1

All American bull from an elite cow family as he traces back to the 5402C donor who is a Dam of Distinction despite being flushed. 5402C has produced several donors for us as well as bulls that have gone to breeders across the US. This bull ranks as the 17th highest bull in the breed for TPI that will be offered for sale this year. He is very dep bodied and thick made. Pull up his video. Top 10% CE, 10% BW, 1% MB, 10% MPI, 4% FPI, 1% TPI.



**UDDER OF 9159G
& DAM OF LOT 106
JOEL SCORED THIS AN 8/8**



**ALL AMERICAN
SIRE OF LOT 108**



**UDDER 1325J
DAM OF LOT 109**

**LOT
109**

5253N Het Black Homo Polled
Reg# AMGV1630914 DOB: 2/20/2025 PB93.8

✓ DCSF POST ROCK EASY UPGRADE 83J2 BW: 88
✓ DBRG MR LUCKY 3255L Adj. WW: 780
DBRG MS WATCHMAN 5402C

✓ DCH MR MAYOR G443
✓ DBRG MS MAYOR 1325J
DBRG MS FH GRANITE 7127E

GE-EPD	CED	BW	WW	YW	MK	CEM
Y	5	3.6	87	137	26	5
Rank %	>95	>95	5	3	20	70
ST	CW	REA	MB	MPI	FPI	TPI
12.5	64	0.63	0.32	91.13	159.62	165.02
95	1	50	25	95	2	15

AOD: 4 Dam Wt: 1469 %BWW: 53.10% Udder: 88 Doc: 1

Bigtime performance-oriented bull out of a donor. This bull ranks as the 47th highest bull in the breed for FPI that will be offered for sale this year. He smashed the scales at 780 pounds. He is packed full of red meat and muscle. He ranks in the top 5% WW, 3% YW, 1% CW, 30% MB, 2% FPI, 10% TPI.



**MR LUCKY
SIRE OF LOT 109**

**LOT
110**

5272N Homo Black Homo Polled
Reg# AMGV1631128 DOB: 2/23/2025 PB86.6

✓ DLW TPG FRONTRUNNER 2510F BW: 83
✓ JKGF ALL AMERICAN J109 Adj. WW: 816
JKGF F109 ET

✓ DBRG MR FRANCHISE 0247H
✓ DBRG MS FRANCHISE 0247H 2172K
DBRG MS GRAVITY 6144D ET

GE-EPD	CED	BW	WW	YW	MK	CEM
Y	15	0.1	93	139	25	8
Rank %	20	50	1	2	30	15
ST	CW	REA	MB	MPI	FPI	TPI
12.3	45	0.72	0.55	116.63	145.58	170.92
95	15	30	3	15	4	10

AOD: 3 Dam Wt: 1410 %BWW: 57.87% Udder: 78 Doc: 1

Bigtime spread bull that weaned off his dam at 816 pounds. He is deep bodied and heavy muscled. All American has sired many sale toppers and this bull's EPD suggest he will be right there. He ranks in the top 20% CE, 1% WW, 2% YW, 15% CW, 3% MB, 3% MPI, 5% FPI, 5% TPI.



**ALL AMERICAN
SIRE OF LOT 110**

**LOT
111**

5284N Homo Black Homo Polled
Reg# AMGV1631139 DOB: 2/27/2025 PB93.8

✓ DBRG MR FRANCHISE 0247H BW: 86
✓ DBRG MR BOLD RULER 3194L Adj. WW: 746
DBRG MS DESTINATION 9159G

✓ MJBC FRANCHISE F806
✓ DBRG MS FRANCHISE 0296H
DDGR MISS CORONA 177C

GE-EPD	CED	BW	WW	YW	MK	CEM
Y	14	-0.9	83	125	31	6
Rank %	25	30	10	15	2	50
ST	CW	REA	MB	MPI	FPI	TPI
13.2	36	0.94	0.44	118.48	121.81	149.24
85	40	4	10	15	25	25

AOD: 5 Dam Wt: 1436 %BWW: 51.95% Udder: 78 Doc: 1

0296H is the mother of Royalty, a popular Balancer AI sire. All of her bull calves have made the sale. She boasts a 98 BW ratio and a 106 WW ratio on her progeny. This bull is maternally bred and soggy made. He ranks in the top 25% CE, 10% WW, 15% YW, 4% RE, 10% MB, 15% MPI, 25% FPI, 25% TPI.



LOT 111 • 5284N

**LOT
112****5297N** Homo Black Homo Polled
Reg# AMGV1631146 DOB: 3/4/2025 PB93.8

- ✓ DBRG MR FRANCHISE 0247H BW: 80
 ✓ DBRG MR BOLD RULER 3194L Adj. WW: 789
 DBRG MS DESTINATION 9159G
 CTR CTR JACKPOT 8660F ET
 ✓ DBRG MS JACKPOT 2300K
 DBRG MS DESTINATION 9275G

GE-EPD	CED	BW	WW	YW	MK	CEM
Y	13	-0.4	79	120	34	5
Rank %	45	40	20	20	1	70
ST	CW	REA	MB	MPI	FPI	TPI
13.8	43	0.69	0.46	105.57	132.13	153.3
75	15	35	10	55	15	20

AOD: 3 Dam Wt: 1386 %BWW: 56.93% Udder: 88 Doc: 1

This bull nursed a dam with a picture-perfect udder and weaned at 789 pounds which was 57% of her body weight. These Bold Ruler calves are flat good with their added depth of body and balanced EPD profile. He ranks in the top 20% WW, 20% YW, 15% CW, 10% MB, 25% MPI, 15% FPI, 15% TPI.

**LOT
113****5330N** Homo Black Homo Polled
Reg# AMGV1631165 DOB: 3/10/2025 PB93.8

- ✓ DLGO AMERICAN OUTLAW BW: 77
 ✓ GMF AMERICAN LOGIC 252K ET Adj. WW: 743
 GMF MENG 26Z
 LWHF PURE-PRIDE 564Z
 ✓ DBRG MS PRIDE 8264F
 DBRG MS WATCHMAN 5402C

GE-EPD	CED	BW	WW	YW	MK	CEM
Y	15	-1.6	58	85	29	9
Rank %	20	15	95	95	5	5
ST	CW	REA	MB	MPI	FPI	TPI
18	21	0.32	0.57	111.11	121.61	179.43
20	90	>95	3	35	25	5

AOD: 7 Dam Wt: 1420 %BWW: 52.32% Udder: 87 Doc: 1

American Logic was a bull we purchased from Meng Farms, and we have 2 bulls out of him this year. Both are younger bulls but have a lot of potential. This bull's Granddam is a Dam of Distinction in 5402C. The dam has a BW ratio of 93 and a WW ratio of 100 on 6 calves. He ranks in the top 25% CE, 15% BW, 20% STAY, 2% MB, 25% FPI, 5% TPI.

**LOT
114****5351N** Homo Black Het Polled
Reg# AMGV1631290 DOB: 3/12/2025 PB99.9

- ✓ DLGO AMERICAN OUTLAW BW: ET
 ✓ GMF AMERICAN LOGIC 252K ET Adj. WW: ET
 GMF MENG 26Z
 CCRO CAROLINA EXCLUSIVE 1230Y
 ✓ DBRG MS EXCLUSIVE 560C ET
 BTBR MS BLACK CROSS 6044

GE-EPD	CED	BW	WW	YW	MK	CEM
Y	13	-1.1	69	104	25	7
Rank %	35	25	65	60	30	30
ST	CW	REA	MB	MPI	FPI	TPI
17.2	29	0.88	0.54	105.63	139.19	175.63
30	65	10	3	55	10	10

AOD: 10 Dam Wt: ET %BWW: ET Udder: ET Doc: 2

This is the last bull to sell out of 560C. We registered 58 calves out of her and she boasted a 95 BW ratio along with a 105 WW ratio. Truly a front pasture kind of female. This bull is sound structure and attractive and will get better with age. He ranks in the top 25% BW, 30% STAY, 10% RE, 3% MB, 10% FPI, 5% TPI.

**LOT 112 • 5297N****4179M • MATERNAL BROTHER
TO LOT 113****SUMMER PASTURE**

Elanco

Rumensin®



TRUSTED BY **EVERY** GENERATION 1975 – 2025

*Helping continue your legacy,
50 years and counting.*

2026



COMMERCE

Sons Sell!

Cattle Fax
presentation with
Troy Applehans
March 13th, 2026
7:00 PM

RIPPE ANGUS
28TH Annual Bull Sale
112 Angus, Gelbvieh & Balancer® Bulls
SATURDAY, MARCH 14 • 1:00 P.M.
Complimentary Lunch • 12:00
SALE LOCATION: Fairbury Livestock Company
Fairbury, NE

Greetings Cattlemen & Cattlewomen:

With a lot of excitement and intensity, we are starting Rippe Angus. This is just our second set of Angus bulls we are offering, but it is far from our first rodeo. We understand how to raise high quality seedstock and what the commercial industry is after. We knew if we ever added a new breed, that we would go procure a few of the very top cows in the breed and build a herd around them via Embryo Transfer.

We stuck to the plan and have visited over 50 Angus operations in the past 3 years. We spent countless hours on the phone learning. Currently, we have purchased 6 donors that stem from the following herds: Tehama Angus - California, Vermilion Angus - Montana, Boyd Beef Cattle - Kentucky, Sitz Angus - Montana, 7 Oaks Angus - Iowa. Jake Tiedeman with Baldridge-Tiedeman Angus has partnered with us on some of the cows and has been very instrumental in assisting us with finding the right programs and genetics.

What sets Rippe Angus apart from other seedstock operations is how tied our family is to the cattle business. My dad, Duane, manages the cow calf and farming operation. I, Dustin own and operate Roode Feedyard in Fairbury, NE. We buy a lot of customers calves each year and feed out all our own cattle each year. This allows us to collect carcass data back on the cattle along with knowing where our genetics need tweaked. I want to emphasize this is not a side business for us, we both make our living in the cattle industry and are passionate about its future.

Joel Cast is very instrumental in this operation. We couldn't manage this herd or collect all the data we do without him. Many operations preach maternal. How can they preach maternal without taking cow weights and looking at cow efficiency. Joels takes pride in taking udder scores on every cow that calves. We are part of Maternal Plus and hope it leads to more accurate data on longevity and fertility in the future.

We are very aggressive when it comes to ET and AI, while also still believing a good herd bull can leave you with an outcross set of females. Every animal we have gets genomic enhanced EPD's along with parent verification. We ultrasound our bulls and females and collect large amounts of carcass data.

It is our hope that the information we track and present to you is valuable. We won't buy a bull without the information we provide. We will be posting additional information on a supplement sheet prior to the sale on our website and Facebook. Please call ahead of the sale and we can go over your program and your program's needs.

Website: www.rippeangus.com

Contact Information:

For information regarding the bulls contact Dustin.

Dustin & Karla Rippe

C - 316-323-4874

C- 402-200-0555

Email: dustin@rgcattle.com

Duane & Brenda Rippe

6775 Road D - Hubbell, NE 68375

C - 402-200-0096

Joel Cast

C - 402-641-1705

10th year at Rippe Gelbvieh

Stan Sims

C - 850-557-0115

1st year at Rippe Gelbvieh

Sale Manager:
Chris Mitchell

MMS

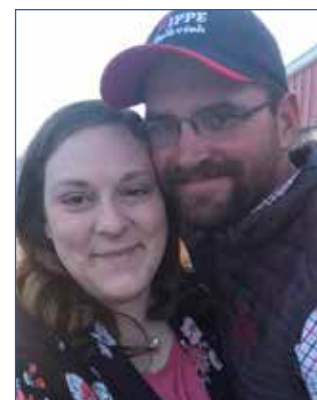
Mitchell Marketing Services
20180 NE Roy Golden Rd - Blountstown, FL 32424

Chris Mitchell
334-695-1371
mchrismitchell@aol.com
www.mms.bz

Duane & Dustin Rippe



Dustin, Karla, Brenda & Duane



Joel & Amanda Cast



Stan Sims family

General Information – Terms & Conditions

Sale Location:

Fairbury Livestock Company, 1312 Sale Barn Road,
Fairbury, NE 68352. On the southeast corner of Fairbury.

Lodging:

A Block of Rooms has been reserved at the Edgewood Hotel & Suites in Fairbury, NE for a discounted rate. To make reservations, call 402-587-5082. Ask for the Rippe Angus rate.

Auctioneer:

Joe Goggins - Billings, MT406-861-5664

Ringmen:

Andee Marston, Kansas Stockman785-250-4449
Troy Applehans, Cattle Fax303-886-0775
Matt Printz, Kansas Stockman308-440-2918

Registered Marketing Agents:

Will Harsh, American Angus Association.....740-272-1386
Jake Tiedeman308-520-0499

Commercial Marketing Agents:

Zach Johnson - Wyoming & Montana.....307-575-2171

Supplement Sheet:

The supplement sheet will be available on sale day and on our website about 3 days prior to the bull sale. It will contain Yearling Weights, Ultrasound information, Scrotal measurements. Any information on the supplement sheet or announced on sale day will take precedence over the catalog

Health:

All bulls will be ready for interstate shipment. They will be BVD tested and had their Lepto shot along with being poured with an Cydectin type product before delivery. Most Importantly, all bulls are raised on our operation under our guidance. This is not a consignment sale and we have no cooperators.

Sale Day Phones:

Sale Barn – Larry Junker 402-300-1141
Dustin Rippe 316-323-4874
Dustin Rippe..... 402-200-0555
Duane Rippe..... 402-200-0096
Joel Cast 402-641-1705
Stan Sims 850-557-0115
Karla Rippe..... 402-366-1943
Chris Mitchell 334-695-1371

SCHEDULE OF EVENTS:

March 8th 2026

Bulls & Brats 1:00 to 5:00 PM. Come Evaluate the bulls in person prior to the sale, at the ranch.

March 13th 2026

Cattle Fax Presentation 7:00 PM. Come Listen to Troy Applehans give us an update on Agricultural markets.
Meal Provided @ the Sale Barn.

March 14th 2026

9:00 AM - 12:30 PM - View the bulls at the Fairbury Sale Barn
12:00 PM - Lunch Provided with homemade Pie
1:00 PM - Sale Starts

Terms and Conditions:

Cash on sale day. All cattle will sell under the recommended terms of the AGA. If you would like to be offered credit, please call Duane prior to sale day. We will be retaining 33% semen and certificate interest on every bull in the catalog unless the bull sells for \$50,000 or more, then we will retain the rights to semen for in herd use only unless it is noted different on sale day.

Guarantee:

The cattle are guaranteed to be fertile and reproductively sound. All bulls selling come with a first-year breeding-season guarantee against injury or infertility issues. "Breeding season" is defined by the time of turnout to 60 days later. **All bulls will have passed a semen evaluation before being delivered.** If any fertility problems happen during the first breeding season, a replacement bull will be available until the purchased bull's long-term fertility can be determined. If a bull sustains a breeding injury during the first breeding season, a credit on a future bull purchase will be given. If a bull sustains an injury or fertility issue, we ask that it is evaluated and treated immediately by a veterinarian and a report is provided by the veterinarian doing the evaluation. If the vet determines the bull is no longer a fertile and mobile breeder, the following formula will be used to determine credit issued on a future purchase: purchase price – salvage value - \$2,500 (if injury related) = credit.

Volume Discount:

If you purchase five or more bulls in one year, you will receive 5% off the price of each bull.

Sight Unseen Purchases:

If you can't attend the sale and you want to buy call Dustin Rippe about your different purchasing options. We handle several customers bull purchases each year. If the bulls don't meet your approval when we unload them, you don't own them.

Delivery & Trucking:

Free delivery within 300 miles of Hubbell, NE. For all bulls further than 300 miles, we will make every effort to accommodate the buyer. Delivery will not exceed \$300/bull to a central location. Any bull taken on sale day, we will deduct \$100 from the bill.

Transfers:

Registration papers will be transferred upon request.

Liability:

Neither the sale host, sale facility, sale management, nor the auctioneer assumes any liability for any accidents that may occur.

Genetic Information:

All lots have had a HD 50K test, and the EPD's listed reflect the 50k enhancement. The test verifies parentage and increases predictability. All animals are tested free of any known genetic defect.

ET Bulls:

The ET bulls are raised by a surrogate mother. Therefore, the bulls actual birth weight and weaning weight are not a representation of the bulls genetics. Consequently, we have chosen not to provide this information as it is inaccurate. EPDs do a much better job of showing the genetic value of these bulls.

Rippe Angus Bull Sale:

Black Balancer Bulls..... Lots 1-76
 Black Purebred Bulls Lots 100-114
 Angus Bulls Lots 200-221

INDEXES

Maternal Weaned Calf Value (\$M), an index, expressed in dollars per head, predicts profitability differences from conception to weaning with the underlying breeding objective assuming that individuals retain their own replacement females within herd and sell the rest of the cull female and all male progeny as feeder calves. The model assumes commercial producers will replace 25% of their breeding females in the first generation and 20% of their breeding females in each subsequent generation.

Weaned Calf Value (\$W), an index, expressed in dollars per head, to predict profitability differences in progeny due to genetics from birth to weaning. The underlying objective being producers will retain 20% of the female progeny as replacements and sell the rest of the cull females and their male counterparts as feeder calves.

Beef Value (\$B), a terminal index, expressed in dollars per carcass, to predict profitability differences in progeny due to genetics for postweaning and carcass traits. This terminal index assumes commercial producers wean all male and female progeny, retain ownership of these animals through the feedlot phase and market these animals on a carcass grid.

Combined Value (\$C), an index, expressed in dollars per head, which includes all traits that make up both Maternal Weaned Calf Value (\$M) and Beef Value (\$B) with the objective that commercial producers will replace 20% of their breeding females per year with replacement heifers retained within their own herd. The remaining cull heifer and steer progeny are then assumed to be sent to the feedlot where the producers retain ownership of those cattle and sell them on a quality-based carcass merit grid.

DVAuction

www.dvauction.com

Watch & Bid online for FREE!

Can't make the sale?
 Let DVAuction bring the sale to you!
Busy during the sale?
 Let DVAuction represent your bid!

Visit www.dvauction.com and Register!
 It's as easy as 1, 2, 3...

1. Create an account at www.dvauction.com under the "create new account" tab
2. Apply for bidding by clicking "apply for bidding" in the upper left corner of your screen, at least 24 hours prior to the auction
3. Tune into the sale and make your purchases!

For General Questions Please Contact Our Office:
 (402) 316-5460 or support@dvauction.com

*High Speed Internet Access Required

About the Catalog:



NAME

Reg#

DOB:

BW:

Adj. WW:

INDEX

SIRE

GRAND SIRE

GRAND DAM

MATERNAL GRAND SIRE

DAM

MATERNAL GRAND DAM

\$M	\$W
\$B	\$C



CED	BW	WW	YW	MK	SC	CEM
FL	TEAT	CLAW	ANGLE	CW	MB	REA



Dam Wt:

%BWW:

Udder:

Doc:

Cow Data

AOD = Age of Dam
 Dam Wt = Cow weight 6 weeks after weaning
 %BWW = Percent the dam weaned of her body weight
 DOC = Docility

EPDs

Expected progeny differences. Winter 2025 evaluation provided by the AAA

Heifer Bulls



If you see a bull with an Rippe Gelbvieh believes it is a heifer bull.

Udder:

The first number is suspension and second references teat size. 9 is ideal. It represents very small teat size and very tight udder suspension. 1 represents very large, ballooned shape teat and a very pendulous suspension.

Doc = Docility:

1 - The bull is content standing alone. 2 - The bull is nervous when standing in a pen alone. 3 - The bull is looking for a hole in the fence when alone. 4 - The bull is looking to chase you out of the pen.

CAB - Certified Angus Beef:



The logo can be used on any registered Angus bull with a minimum marbling EPD (Marb) of +0.65 and an Angus Grid Value Index (\$G) of +55 or higher.

Why these numbers? Sire-identified carcass data from more than 8,600 records in the American Angus Association database show these minimum thresholds for Marb and \$G achieve an average of 50% CAB acceptance.

Catalog designed by: Lynn Valentine

ANGUS

I said last year we are getting in the Angus breed rather quickly through embryo transfer. This year we are offering 22 Angus bulls, and they are all out of our embryo transfer program. This is a combination of bulls out of donors we own, or embryos out of cows we thought were very high quality and purchased embryos out of them. We have placed a very strong emphasis on foot quality along with maternal traits in our Angus program. We rank very well for Functional Longevity (FL), which is a new EPD tool that is going to assist us in finding cattle that last longer in your herd. This is the #1 most profitable trait for the commercial cattle industry. You can see in this lineup, our AVERAGE \$M is the top 5% of the breed. In addition, this pen averages in the top 15% of the breed for \$C. Lots 200 through 208 are Age Advantage bulls, that are ready for a big set of cows.



COMMERCE
SIRE OF LOTS 200, 201, 202

LOT 200

RIPPE COMMERCE 4553M

Reg# 21078151 DOB: 08/18/24

BW: ET Adj. WW: ET

G A R SUNBEAM
CONNEALY COMMERCE
AVIRA OF CONANGA 814R
G A R QUANTUM
MAPLECREST FANNY 1061
MAPLECREST FANNY 8017

INDEX	
\$M	\$W
68	103
50	1
\$B	\$C
223	357
5	5



CED	BW	WW	YW	MK	SC	CEM
10	2.4	96	166	34	1.57	13
20	75	2	3	10	15	10
FL	TEAT	CLAW	ANGLE	CW	MB	REA
1.03	0.48	0.23	0.36	95	0.9	1.86
70	65	1	10	1	35	1

Dam Wt: ET %BW: ET Udder: ET Doc: 1

Deep bodied, sound structured Commerce son. These next 3 bulls are all out of Maplecrest Fanny 1061, who is a full sister to Maplecrest Fanny 0063, a donor for the Baldrige Angus program. This individual is unique as he is the 44th highest \$C and the 6th highest for claw of Commerce sons in the Angus breed. He ranks in the top 10% CE, 2% WW, 1% claw, 10% angle, 1% CW, 1% RE, 4% \$B, 4% \$C.

LOT 201

RIPPE COMMERCE 4563M

Reg# 21078153 DOB: 08/22/24

BW: ET Adj. WW: ET

G A R SUNBEAM
CONNEALY COMMERCE
AVIRA OF CONANGA 814R
G A R QUANTUM
MAPLECREST FANNY 1061
MAPLECREST FANNY 8017

INDEX	
\$M	\$W
60	91
65	10
\$B	\$C
178	291
25	30

CED	BW	WW	YW	MK	SC	CEM
7	2.6	95	164	27	1.73	13
45	80	3	3	45	10	10
FL	TEAT	CLAW	ANGLE	CW	MB	REA
1.02	0.43	0.34	0.44	78	0.56	1.27
75	75	10	35	10	70	4

Dam Wt: ET %BW: ET Udder: ET Doc: 1

Full brother to Lot 200. This bull is a tank as he is deep bodied, and heavy muscled. This is a pounds and performance-oriented type bull who is very sound structured. He ranks in the top 3% WW, 3% YW, 10% CLAW, 10% CW, 4% RE, 30% \$C.



LOT 200
RIPPE COMMERCE 4553M



MAPLECREST FANNY 1061
DAM OF LOTS 200, 201, 202

**LOT
202**

RIPPE COMMERCE 4554M

Reg# 21078149 DOB: 08/18/24

BW: ET Adj. WW: ET

G A R SUNBEAM
CONNEALY COMMERCE
AVIRA OF CONANGA 814R

G A R QUANTUM
MAPLECREST FANNY 1061
MAPLECREST FANNY 8017

INDEX	
\$M	\$W
81	90
20	10
\$B	\$C
199	339
15	10



CED	BW	WW	YW	MK	SC	CEM
6	4.1	90	144	27	1.63	13
55	95	10	20	45	10	10
FL	TEAT	CLAW	ANGLE	CW	MB	REA
1.07	0.61	0.36	0.41	77	1	1.01
50	40	10	20	10	30	20

Dam Wt: ET %BW: ET Udder: ET Doc: 1

A set of Commerce sons was the ideal way to start this sale off with as they are easy calving, deep bodied, sound structured, and bigger framed. This bull exemplifies those traits. He ranks in the top 10% WW, 20% YW, 10% CEM, 10% Claw, 20% Angle, 10% CW, 15% RE, 20% \$M, 15% \$B, 10% \$C.



**PROLIFIC
SIRE OF LOTS 203 & 204**

**LOT
203**

RIPPE PROLIFIC 4591M

Reg# 21078196 DOB: 09/15/24

BW: ET Adj. WW: ET

ELLINGSON PROFOUND 8155
ELLINGSON PROLIFIC
EA QUEEN 8070

G A R MOMENTUM
G A R MOMENTUM 3299
G A R SURE FIRE A5008

INDEX	
\$M	\$W
115	107
1	1
\$B	\$C
200	374
15	3



CED	BW	WW	YW	MK	SC	CEM
9	1.9	97	158	27	0.83	13
30	65	2	5	45	55	10
FL	TEAT	CLAW	ANGLE	CW	MB	REA
1.1	0.24	0.25	0.3	80	1.28	0.97
35	95	1	2	10	15	20

Dam Wt: ET %BW: ET Udder: ET Doc: 1

Prolific son that we have been excited about since he hit the ground. His dam is a maternal sib to the STAI sire Greater Good. This mating combined with Prolific worked great. He is a heavy muscled and deep bodied bull. What sets this bull apart is he ranks in the top 1% for both Claw & Angle while also being the 11th highest \$C and 39th highest \$M Prolific son in the Angus breed. He ranks in the top 30% CE, 2% WW, 5% YW, 10% CEM, 30% FL, 20% DOC, 10% CW, 15% MB, 20% RE, 1% \$M, 2% \$C.



**GAR MOMENTUM 3299
DAM OF LOTS 203 & 204**

**LOT
204**

RIPPE PROLIFIC 4576M

Reg# 21078195 DOB: 09/04/24

BW: ET Adj. WW: ET

ELLINGSON PROFOUND 8155
ELLINGSON PROLIFIC
EA QUEEN 8070

G A R MOMENTUM
G A R MOMENTUM 3299
G A R SURE FIRE A5008

INDEX	
\$M	\$W
93	90
10	10
\$B	\$C
180	326
25	15



CED	BW	WW	YW	MK	SC	CEM
11	0.8	79	140	32	0.8	13
15	40	25	20	15	60	10
FL	TEAT	CLAW	ANGLE	CW	MB	REA
1.08	0.49	0.43	0.38	70	0.86	0.97
45	65	30	15	20	40	20

Dam Wt: ET %BW: ET Udder: ET Doc: 1

Full brother to Lot 204. Combining two great programs in Gardiner and Ellingson in these full brothers was a wise decision. This bull is deep bodied and more moderately framed than 203. This bull is ready for a large set of heifers as he ranks in the top 15% of the breed for calving ease. In addition, top 25% WW, 25% YW, 25% Claw, 10% Angle, 20% CW, 20% RE, 10% \$M, 15% \$C.



**LOT
205****RIPPE ARCHITECT 4535M**

Reg# 21079945

DOB: 08/12/24

BW: ET

Adj. WW: ET

SYDGEN BLUEPRINT
S ARCHITECT 9501
S BLOSSOM 7514

TEHAMA TAHOE B767
MYERS LUCY M260
DALTONS LUCY 7361

INDEX	
\$M	\$W
91	102
10	1
\$B	\$C
184	330
20	15

CED	BW	WW	YW	MK	SC	CEM
7	0.7	95	159	27	2.14	12
45	40	3	5	45	2	15
FL	TEAT	CLAW	ANGLE	CW	MB	REA
1.1	0.6	0.46	0.46	82	0.66	0.78
35	40	40	45	5	60	40



Dam Wt: ET

%BW: ET

Udder: ET

Doc: 1

Out of all my travels in the Angus breed, the donor M260 has always been one of my favorites. We were fortunate to purchase some embryos out of this great donor from the Myers program. Long and deep bodied describe this bull that we used in our program to clean up heifers this fall. He ranks in the top 3% WW, 5% YW, 25% FL, 5% CW, 10% \$M, 20% \$B, 10% \$C.



ARCHITECT
SIRE OF LOTS 205 & 206

**LOT
206****RIPPE ARCHITECT 4546M**

Reg# 21079947

DOB: 08/16/24

BW: ET

Adj. WW: ET

SYDGEN BLUEPRINT
S ARCHITECT 9501
S BLOSSOM 7514

TEHAMA TAHOE B767
MYERS LUCY M260
DALTONS LUCY 7361

INDEX	
\$M	\$W
108	109
1	1
\$B	\$C
168	326
35	15

CED	BW	WW	YW	MK	SC	CEM
16	-3.5	89	151	32	1.82	12
2	1	10	10	15	10	15
FL	TEAT	CLAW	ANGLE	CW	MB	REA
1.12	0.8	0.51	0.53	68	0.98	0.77
25	10	60	80	25	30	45



Dam Wt: ET

%BW: ET

Udder: ET

Doc: 1.5

High end Calving Ease bull out of the great donor M260 and the Genex AI bull Architect. We also utilized this bull to clean up heifers this fall. Female maker pedigree. This bull ranks in the top 2% CE, 1% BW, 10% WW, 10% YW, 15% CEM, 10% Teat, 25% Udder, 20% FL, 20% CW, 2% \$M, 15% \$C.



LOT 205
RIPPE ARCHITECT 4535M



MYERS LUCY M260
DAM OF LOTS 205 & 206

**KAYDEN LOVES SOFTBALL**

**LOT
207**

RIPPE WILDCAT 4555M

Reg# 21079887 DOB: 08/13/24

BW: ET Adj. WW: ET

GAR DISCOVERY 6737H
E & B WILDCAT 9402
E&B LADY PLUS 643
HOOVER NO DOUBT
INGRAM HYALITE LADY 0437
EA HYALITE LADY 1333

INDEX	
\$M	\$W
68	63
50	55
\$B	\$C
190	314
20	20



**WILDCAT
SIRE OF LOT 207**



CED	BW	WW	YW	MK	SC	CEM
-2	3.8	84	147	18	-0.1	6
95	95	15	15	95	95	70
FL	TEAT	CLAW	ANGLE	CW	MB	REA
1.06	0.63	0.44	0.34	62	1.14	1.19
55	35	35	4	35	20	10

Dam Wt: ET %BW: ET Udder: ET Doc: 1

Big framed, sound structured, and attractive describe this Wildcat son. This bull will sire feeders that will flat get it done from a performance standpoint and do very well in the feedyard. He ranks in the top 15% for WW, 15% YW, 25% udder, 4% Angle, 20% MB, 10% RE, 20% \$B, 20% \$C.

**LOT
208**

RIPPE JAMESON 4556M

Reg# 21079708 DOB: 08/18/24

BW: ET Adj. WW: ET

BASIN DEPOSIT 6249
BASIN JAMESON 1076
BASIN JOY 9140
LINZ EXEMPLIFY 71124
WSC BLACKCAP H632
MONTANA BLACKCAP 7116

INDEX	
\$M	\$W
106	111
2	1
\$B	\$C
183	343
20	10



**JAMESON
SIRE OF LOT 208**



CED	BW	WW	YW	MK	SC	CEM
6	2.4	100	151	28	1.29	6
55	75	1	10	40	25	70
FL	TEAT	CLAW	ANGLE	CW	MB	REA
1.05	0.56	0.37	0.3	70	1.27	1.09
60	50	15	2	20	15	15

Dam Wt: ET %BW: ET Udder: ET Doc: 1

A more moderate framed Jameson bull that excels from a maternal standpoint. He ranks as the 75th highest Jameson son in the Angus breed for \$M. Entering the Angus breed we really tried to stress problem free cattle that excel from a maternal standpoint. He ranks in the top 1% WW, 10% YW, 15% Doc, 10% Claw, 1% Angle, 20% CW, 15% MB, 15% RE, 1% \$M, 20% \$B, 10% \$C. Hard to find EPDs like that.

MAKE YOUR CATTLE STAND OUT

You've made a significant investment in your genetics, but does the market recognize that? Stand out by differentiating your cattle with AngusLink™ programs: AngusVerified™ and the Genetic Merit Scorecard™. AngusVerified validates your calves are sired by registered Angus bulls and make your cattle stand apart from other black hides on sale day. The Genetic Merit Scorecard gives buyers the confidence they need to pay more for your quality calves.

Users of the AngusLink programs earn \$13-15/CWT PREMIUMS on average. Give us a call, and learn how to claim your competitive edge with AngusLink value-added programs.



The Genetic Merit Scorecard and AngusVerified are administered by IMI Global.

ANGUSLINK
ANGUS BREED

ANGUSLINK.COM | 816-383-5100

**LOT
209****RIPPE VOYAGE 5321N**

Reg# 21266853

DOB: 03/08/25

BW: ET

Adj. WW: ET

S S ODYSSEY H71
S S VOYAGE

S S MISS RITA 4P26 P810

KOU PAL ADVANCE 28

TEHAMA MARY BLACKBIRD E725

TEHAMA MARY BLACKBIRD B642

INDEX

\$M	\$W
88	84
15	15
\$B	\$C
181	323
25	15

**LOT 209
RIPPE VOYAGE 5321N**

CED	BW	WW	YW	MK	SC	CEM
7	3.7	85	146	29	0.61	9
45	95	15	15	30	70	40
FL	TEAT	CLAW	ANGLE	CW	MB	REA
1.11	0.59	0.48	0.34	67	0.9	1.16
30	45	50	4	25	35	10

Dam Wt: ET

%BW: ET

Udder: ET

Doc: 1

We were fortunate to get to purchase E725 from Tehama Angus. We were also fortunate that Grimmus allowed us to purchase Voyage and this mating worked very well. This bull is very deep bodied, sound structured and flat good. This bull will make a great set of females. He ranks in the top 15% WW, 15% YW, 30% FL, 3% Angle, 25% CW, 10% RE, 10% SM, 25% SB, 15% SC.

**LOT
210****RIPPE VOYAGE 5306N**

Reg# 21266852

DOB: 03/06/25

BW: ET

Adj. WW: ET

S S ODYSSEY H71
S S VOYAGE

S S MISS RITA 4P26 P810

KOU PAL ADVANCE 28

TEHAMA MARY BLACKBIRD E725

TEHAMA MARY BLACKBIRD B642

INDEX

\$M	\$W
79	82
25	20
\$B	\$C
192	328
15	15

**MARY BLACKBIRD E725
DAM OF LOTS 209-211**

CED	BW	WW	YW	MK	SC	CEM
11	0.7	77	137	30	0.4	13
15	40	30	25	25	85	10
FL	TEAT	CLAW	ANGLE	CW	MB	REA
1.14	0.7	0.5	0.47	69	1.01	0.91
15	25	60	50	20	30	30

Dam Wt: ET

%BW: ET

Udder: ET

Doc: 1

Heifer bull from the same mating as Lot 209. This bull is deep bodied and soggy made. He excels from a maternal standpoint while still ranking in the top of the breed for \$B. That is what drew us to E725. She was as big of a bodied cow with AS great feet as you can find. We are building our Angus program around this female. This bull ranks in the top 15% CE, 25% YW, 10% CEM, 25% Teat, 10% Udder, 15% FL, 20% CW, 20% SM, 15% SB, 15% SC.

**LOT
211****RIPPE VOYAGE 5355N**

Reg# 21266857

DOB: 03/12/25

BW: ET

Adj. WW: ET

S S ODYSSEY H71
S S VOYAGE

S S MISS RITA 4P26 P810

KOU PAL ADVANCE 28

TEHAMA MARY BLACKBIRD E725

TEHAMA MARY BLACKBIRD B642

INDEX

\$M	\$W
87	68
15	45
\$B	\$C
182	323
25	15

**VOYAGE
SIRE OF LOTS 209-213**

CED	BW	WW	YW	MK	SC	CEM
11	0.9	65	120	30	-0.04	12
15	45	60	55	25	95	15
FL	TEAT	CLAW	ANGLE	CW	MB	REA
1.15	0.7	0.35	0.41	58	1.04	0.86
15	25	10	20	45	25	35

Dam Wt: ET

%BW: ET

Udder: ET

Doc: 1

Full brother to Lot 209 & 210. We harvested our first set of Voyage cattle this past fall and they did great from a Carcass weight and growth standpoint while still achieving Choice or higher. This heifer bull ranks in the top 15% CE, 15% CEM, 20% Teat, 15% FL, 10% Claw, 20% Angle, 25% MB, 15% SM, 25% SB, 15% SC.

**LOT
212**

RIPPE VOYAGE 5108N

Reg# 21266850 DOB: 02/08/25

BW: ET Adj. WW: ET

S S ODYSSEY H71
S S VOYAGE
S S MISS RITA 4P26 P810
CONNEALY COUNTDOWN
VERMILION ELDINA 6467
VERMILION ELDINA 3284

INDEX	
\$M	\$W
95	73
5	35
\$B	\$C
170	315
35	20



**LOT 212
RIPPE VOYAGE 5108N**



CED	BW	WW	YW	MK	SC	CEM
12	0.9	68	120	29	1.28	10
10	45	55	55	30	25	30
FL	TEAT	CLAW	ANGLE	CW	MB	REA
1.15	0.52	0.35	0.45	63	0.76	0.94
15	60	10	40	35	50	25

Dam Wt: ET %BW: ET Udder: ET Doc: 1

We selected 6467 from the Vermilion program and she was their 2nd high selling female that year. She is big bodied, stout made, great feet, and was a Pathfinder. This bull got all those traits from his Dam and then some. Heifer bull that will leave you with a great set of females. He ranks in the top 10% CE, 20% Udder, 15% FL, 15% Doc, 10% Claw, 25% RE, 10% SM, 20% SC.

**LOT
213**

RIPPE VOYAGE 5090N

Reg# 21266849 DOB: 02/07/25

BW: ET Adj. WW: ET

S S ODYSSEY H71
S S VOYAGE
S S MISS RITA 4P26 P810
CONNEALY COUNTDOWN
VERMILION ELDINA 6467
VERMILION ELDINA 3284

INDEX	
\$M	\$W
91	74
10	35
\$B	\$C
158	296
45	30



**ELDINA 6467
DAM OF LOTS 212-213**



CED	BW	WW	YW	MK	SC	CEM
9	1.6	70	120	27	0.78	5
30	60	50	55	45	60	80
FL	TEAT	CLAW	ANGLE	CW	MB	REA
1.11	0.64	0.47	0.51	51	0.94	0.75
30	35	45	70	65	35	45

Dam Wt: ET %BW: ET Udder: ET Doc: 1

Full brother to the last bull. This bull is sound structured, attractive, and complete. Heifer bull who ranks in the top 30% of the breed for calving ease. In addition, he ranks in the top 10% Udder, 30% FL, 10% Doc, 10% SM.



ONE OF OUR TOP MECHANICS!



WILLOW ON HER ANNUAL COLD CATTLE DRIVE

**LOT
214**

RIPPE RISE ABOVE 5292N

Reg# 21267761 DOB: 03/03/25

BW: ET Adj. WW: ET

HOFFMAN STAGECOACH 1908
STELLPFLUG HOFFMAN RISEABOVE
HOFFMAN 3210 RITA LADY 0256
CONNEALY THUNDER
MYERS MISS BEAUTY M136
MYERS MISS BEAUTY M476

INDEX	
\$M	\$W
117	99
1	2
\$B	\$C
138	296
70	30

CED	BW	WW	YW	MK	SC	CEM
10	-0.3	86	140	27	-0.11	12
20	20	10	20	45	95	15
FL	TEAT	CLAW	ANGLE	CW	MB	REA
1.16	0.65	0.42	0.31	61	0.4	0.46
10	30	25	2	40	85	80



Dam Wt: ET %BWV: ET Udder: ET Doc: 1

We purchased a few embryos from Fair N Square's dam. It is not often you can purchase a Maternal brother to an AI sire. This bull is a tank and is one of the top bulls in the pen. It is time to expand our cowherd and this bull will leave you with a great set of daughters. Take a look at this bull's video or in person as this bull has an ideal set to the angle of his foot. This heifer bull ranks in the top 30% CE, 20% BW, 10% WW, 20% YW, 30% Teat, 15% FL, 30% Claw, 2% Angle, 1% \$M.



**LOT 214
RIPPE RISE ABOVE 5292N**



**MYERS MISS BEAUTY M136
DAM OF LOT 214 & RISE ABOVE**



**FAIR N SQUARE
MATERNAL BROTHER TO LOT 214**

**LOT
215**

RIPPE RISE ABOVE 5069N

Reg# 21267765 DOB: 02/03/25

BW: ET Adj. WW: ET

HOFFMAN STAGECOACH 1908
STELLPFLUG HOFFMAN RISEABOVE
HOFFMAN 3210 RITA LADY 0256
CONNEALY SPUR
VERMILION EVERGREEN 6261
VERMILION EVERGREEN 1588

INDEX	
\$M	\$W
92	74
10	35
\$B	\$C
136	268
75	50

CED	BW	WW	YW	MK	SC	CEM
11	1.5	71	125	26	0.77	11
15	55	45	45	50	60	25
FL	TEAT	CLAW	ANGLE	CW	MB	REA
1.13	0.25	0.56	0.37	46	0.74	0.55
20	95	80	10	75	50	70



Dam Wt: ET %BWV: ET Udder: ET Doc: 1

6261 is the mother of the famous Donor 8080 at Vermilion Ranch. In my eyes, their top donor. This is a very good flush of bulls. This individual is the heifer bull of the group and he is flat good. He ranks in the top 15% CE, 25% CEM, 15% FL, 10% DOC, 10% Angle, 10% \$M.



**RISE ABOVE
SIRE OF LOTS 214-218**

**LOT
216**

RIPPE RISE ABOVE 5071N

Reg# 21267766 DOB: 02/04/25

BW: ET Adj. WW: ET

HOFFMAN STAGECOACH 1908
STELLPFLUG HOFFMAN RISEABOVE
HOFFMAN 3210 RITA LADY 0256

CONNEALY SPUR
VERMILION EVERGREEN 6261
VERMILION EVERGREEN 1588

INDEX	
\$M	\$W
107	72
2	35
\$B	\$C
150	302
55	25



VR 8080

MATERNAL SIBLING TO LOTS 215-218



CED	BW	WW	YW	MK	SC	CEM
2	2.5	74	117	20	0.39	7
85	80	35	60	90	85	65
FL	TEAT	CLAW	ANGLE	CW	MB	REA
1.2	0.35	0.53	0.42	48	0.84	0.67
3	90	70	25	70	40	55

Dam Wt: ET %BWW: ET Udder: ET Doc: 1

This bull is stout, heavy muscled and flat good. If raising top end steers along with great females matters to your program, look at this bull. He ranks in the top 3% FL, 25% Angle, 2% \$M, 1% Good.

**LOT
217**

RIPPE RISE ABOVE 5104N

Reg# 21267776 DOB: 02/08/25

BW: ET Adj. WW: ET

HOFFMAN STAGECOACH 1908
STELLPFLUG HOFFMAN RISEABOVE
HOFFMAN 3210 RITA LADY 0256

CONNEALY SPUR
VERMILION EVERGREEN 6261
VERMILION EVERGREEN 1588

INDEX	
\$M	\$W
106	77
2	25
\$B	\$C
134	280
75	40

**LOT
218**

RIPPE RISE ABOVE 5115N

Reg# 21267778 DOB: 02/08/25

BW: ET Adj. WW: ET

HOFFMAN STAGECOACH 1908
STELLPFLUG HOFFMAN RISEABOVE
HOFFMAN 3210 RITA LADY 0256

CONNEALY SPUR
VERMILION EVERGREEN 6261
VERMILION EVERGREEN 1588

INDEX	
\$M	\$W
109	90
1	10
\$B	\$C
148	301
60	25



CED	BW	WW	YW	MK	SC	CEM
4	1.7	76	130	22	0.95	5
70	60	30	35	80	50	80
FL	TEAT	CLAW	ANGLE	CW	MB	REA
1.16	0.33	0.53	0.47	45	0.83	0.49
10	90	70	50	75	40	80

Dam Wt: ET %BWW: ET Udder: ET Doc: 1

Deep bodied, and heavy muscled describe this Rise Above son. Rise above adds extra stretch and frame in a very sound and complete package. We are very excited for the full sibling daughters of this mating we are retaining. This bull ranks in the top 30% WW, 10% FL, 15% Doc, 2% \$M.



CED	BW	WW	YW	MK	SC	CEM
9	0.4	79	126	27	0.49	9
30	30	25	45	45	80	40
FL	TEAT	CLAW	ANGLE	CW	MB	REA
1.25	0.37	0.6	0.44	55	0.82	0.39
1	85	90	35	55	45	85

Dam Wt: ET %BWW: ET Udder: ET Doc: 1

This is the big framed bull out of the flush who is deep bodied and thick. In addition, he is a heifer bull with a 9 CE. This bull might have the highest FL of any bull in the sale. He ranks in the top 30% CE, 20% WW, 1% FL, 15% Doc, 1% \$M, 25% \$C.

DEDICATED. COMMITTED.

WHOLE HERD REPORTING WITH MATERNALPLUS®



Raising quality registered Angus cattle takes **COMMITMENT**.

As your genetic supplier, we are **DEDICATED** to not only improve today's genetics, but also prepare for the future of the Angus breed. We believe a commitment to improvement starts with the female. Commit to the female — commit to MaternalPlus®.

Contact Customer Service at 816-383-5100 or angus@angus.org for more information.



**LOT
219**

RIPPE TOP GUN 5084N

Reg# 21267606

DOB: 02/06/25

BW: ET

Adj. WW: ET

V A R FIRE POWER
SCHIEFELBEIN TOP GUN 522
FROSTY ELBA 4220

CONNEALY CONFIDENCE PLUS
BA7 OAKS ERICA J27
ERICA OF ELLSTON T220

INDEX	
\$M	\$W
85	81
15	20
\$B	\$C
176	313
25	20



**LOT 219
RIPPE TOP GUN 5084N**



CED	BW	WW	YW	MK	SC	CEM
7	1.5	82	148	27	0.31	8
45	55	20	15	45	85	55
FL	TEAT	CLAW	ANGLE	CW	MB	REA
1.07	0.64	0.41	0.35	56	1.09	0.95
50	35	25	5	50	25	25

Dam Wt: ET

%BWV: ET

Udder: ET

Doc: 1

We were fortunate to partner with Baldridge Tiedeman Angus and 7 Oaks Angus on this J27 who is a daughter of the great donor T220 who needs no introduction into the Angus breed. This Top Gun sired bull is the stoutest and heaviest weight bull in our pen. He ranks in the top 20% WW, 15% YW, 10% Udder, 1% Doc, 20% Claw, 5% Angle, 25% MB, 25% RE, 15% SM, 20% SC.



**TOP GUN
SIRE OF LOT 219**



**ERICA J27
DAM OF LOT 219**



**T220
GRANDAM OF LOT 219**



PICKING UP ROCKS IN A FIELD

**LOT
220****RIPPE UNIFIED 5077N**

Reg# 21268577

DOB: 02/06/25

BW: ET

Adj. WW: ET

A A R ESSENTIAL

CIRCLE L UNIFIED

CIRCLE L LADY 100E

TEHAMA PATRIARCH F028

TEHAMA BLACKCAP K656

TEHAMA BLACKCAP C262

INDEX

\$M	\$W
93	90
10	10
\$B	\$C
150	288
55	35



CED	BW	WW	YW	MK	SC	CEM
6	2.1	83	129	29	0.87	11
55	70	15	40	30	55	25
FL	TEAT	CLAW	ANGLE	CW	MB	REA
1.12	0.5	0.39	0.38	56	0.76	1.12
25	65	15	15	50	50	10

Dam Wt: ET

%BWW: ET

Udder: ET

Doc: 1

Unified was purchased by Vermillion and we love his first set of calves. We will be offering more in the future. This bull is soggy and complete. He ranks in the top 15% WW, 25% CEM, 25% FL, 15% Claw, 15% Angle, 10% RE, 10% \$M.

**LOT
221****RIPPE UNIFIED 5103N**

Reg# 21268580

DOB: 02/08/25

BW: ET

Adj. WW: ET

A A R ESSENTIAL

CIRCLE L UNIFIED

CIRCLE L LADY 100E

TEHAMA PATRIARCH F028

TEHAMA BLACKCAP K656

TEHAMA BLACKCAP C262

INDEX

\$M	\$W
107	95
2	4
\$B	\$C
179	339
25	10



CED	BW	WW	YW	MK	SC	CEM
13	-1.5	74	125	36	2.22	11
10	10	35	45	5	2	25
FL	TEAT	CLAW	ANGLE	CW	MB	REA
1.2	0.79	0.35	0.44	58	1.32	0.59
3	10	10	35	45	15	65



Dam Wt: ET

%BWW: ET

Udder: ET

Doc: 1

Very attractive and deep bodied Unified son. He ranks as the 16th highest for \$C and 51st highest for \$M of all the Unified sons in the Angus breed. His donor dam came from the Tehama Angus program. This bull ranks in the top 15% WW, 25% CEM, 25% FL, 15% Claw, 15% Angle, 10% RE, 10% \$M.



UNIFIED
SIRE OF LOTS 220 & 221



TEHAMA BLACKCAP K656
DAM OF LOTS 220 & 221



KIDS WITH BOTTLE CALVES.
THEY RAISED 7 LAST SUMMER



BALDCO RIPPE DEMAND
MATERNAL BROTHER TO LOTS 220 & 221

For semen, contact Styles Angus, Bentford, SD