

2025



RISE ABOVE

Sons Sell!

Cattle Fax
presentation with
Troy Applehans
March 7th, 2025
7:00 PM

RIPPE GELBVIEH

27TH Annual Bull Sale

117 Balancer[®], Gelbvieh & Angus Bulls,

SATURDAY, MARCH 8 • 1:00 P.M.

Complimentary Lunch • 12:00'

SALE LOCATION: Fairbury Livestock Company
Fairbury, NE

Greetings Cattlemen & Cattlewomen:

Sometimes I can't believe how good this market truly is, I hope it continues for the rest of my life. Fertility continues to be a problem in the commercial cattle industry and Gelbvieh excels in fertility and longevity. I continue to preach every commercial cowherd needs some Gelbvieh in their herd, so they last. New this year is the Roode Feedyard (RF Index). I spent a lot of time this summer compiling all our carcass data and in herd data along with our private grid with JBS. This grid is one of a kind and I don't think anyone in the industry has as much real industry data behind it as this one.

Rippe Gelbvieh has continued to assemble a cow herd that is balanced in ALL traits that are economically important to our customers – commercial cattlemen. We have a complete lineup of Balancer and Purebred Gelbvieh bulls that have enough genetic variation to compliment your cow herd and allow you to take full advantage of the “free lunch” that heterosis and hybrid vigor offer.

In my eyes, what sets us at Rippe Gelbvieh apart is how much we are tied into the cattle business. My dad, Duane, manages the cow calf and farming operation. I, Dustin, own and operate Roode Feedyard at Fairbury, NE. I buy a lot of customer calves and feed out our own each year. This allows us to collect carcass data back on many, many individual animals. I want to emphasize this is not a side business for us, we both make our living in the cattle industry and are really passionate about its future.

Joel Cast is also very instrumental in this operation. Joel knows the cattle as well as anyone. I can point out a cow 50 yards away and he can tell me what cow it is along with 2 generations back in her pedigree and what the birthweight was of her last calf. We couldn't manage this herd or collect the data we do without him.

Many places preach maternal. How can they preach maternal without taking cow weights and looking at cow efficiency? Joel takes pride in taking an udder score on every cow that calves. Every heifer is DNA'd prior to being selected as a replacement.

Not many operations can match the genetic lineup we are offering. It isn't by chance. We run a very large seedstock herd and are very aggressive in our AI and ET program along with owning some of the best bulls in the business. From a carcass standpoint, we have as much actual kill data as anyone in the country. We ultrasound the bulls and heifers each and every year.

It is our hope that the information we track is valuable to you when you are selecting bulls. I won't buy a bull that is not sire verified. I won't buy a bull without knowing the udder on the dam. I won't buy a bull that doesn't have genomics. You shouldn't either. We will be posting additional information on a supplement sheet prior to the sale on our website. Please call ahead of the sale and we can go over your program and your program's needs.

Duane & Dustin Rippe

Contact Information:

For information regarding the bulls contact Dustin.

Dustin & Karla Rippe

C - 316-323-4874

C- 402-200-0555

Email: dustin@rgcattle.com

Duane & Brenda Rippe

6775 Road D – Hubbell, NE 68375

C – 402-200-0096

Joel Cast

C - 402-641-1705

9th year at Rippe Gelbvieh

Sale Manager:

Chris Mitchell

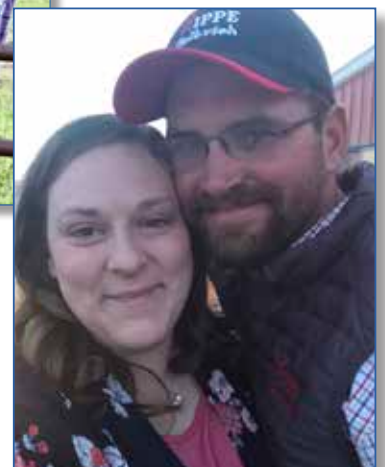
MIMS

Mitchell Marketing Services

20180 NE Roy Golden Rd - Blountstown, FL 32424



Dustin, Karla, Brenda & Duane



Joel & Amanda Cast

Chris Mitchell
334-695-1371
mchrismitchell@aol.com
www.mms.bz

General Information – Terms & Conditions

Sale Location:

Fairbury Livestock Company, 1312 Sale Barn Road,
Fairbury, NE 68352. On the southeast corner of Fairbury.

Lodging:

A Block of Rooms has been reserved at the Edgewood Hotel & Suites in Fairbury, NE for \$110 plus tax. To make reservations, call 402-587-5082. Ask for the Rippe Gelbvieh rate.

Auctioneer:

Kyle Elwood, Salina, KS 785-493-2901

Ringmen:

Andee Marston, Kansas Stockman785-250-4449

Troy Applehans, Cattle Fax303-886-0775

Matt Printz, Kansas Stockman308-440-2918

Commercial Marketing Agents:

Zach Johnson - Wyoming & Montana.....307-575-2171

Supplement Sheet:

The supplement sheet will be available on sale day and on our website about 3 days prior to the bull sale. It will contain Yearling Weights, Ultrasound information, Scrotal measurements. Any information on the supplement sheet or announced on sale day will take precedence over the catalog

Health:

All bulls will be ready for interstate shipment. They will be BVD tested and had their Lepto shot. In addition, they will have passed a breeding soundness exam along with being poured with an Ivermectin type of product before delivery.

Sale Day Phones:

Sale Barn – Larry Junker 402-300-1141

Dustin Rippe 316-323-4874

Dustin Rippe 402-200-0555

Duane Rippe..... 402-200-0096

Joel Cast 402-641-1705

Karla Rippe..... 402-366-1943

Chris Mitchell 334-695-1371

Ty Nelson..... 402-822-0276

Website: www.rippegelbvieh.com

SCHEDULE OF EVENTS:

March 2nd 2025

Bulls & Brats 1:00 to 5:00 PM. Come Evaluate the bulls in person prior to the sale, at the ranch.

March 7th 2025

Cattle Fax Presentation 7:00 PM. Come Listen to Troy Applehans give us an update on Agricultural markets.
Meal Provided @ the Sale Barn.

March 8th 2025

9:00 AM - 12:30 PM - View the bulls at the Fairbury Sale Barn
12:00 PM - Lunch Provided with homemade Pie
1:00 PM - Sale Starts

Terms and Conditions:

Cash on sale day. All cattle will sell under the recommended terms of the AGA. If you would like to be offered credit, please call Duane prior to sale day. We will be retaining 50% semen and certificate interest on every bull in the catalog unless otherwise noted.

Guarantee:

The cattle are guaranteed to be fertile and reproductively sound. All bulls selling come with a first-year breeding-season guarantee against injury or infertility issues. "Breeding season" is defined by the time of turnout to 60 days later. **All bulls will have passed a semen evaluation before being delivered.** If any fertility problems happen during the first breeding season, a replacement bull will be available until the purchased bull's long-term fertility can be determined. If a bull sustains a breeding injury during the first breeding season, a credit on a future bull purchase will be given. If a bull sustains an injury or fertility issue, we ask that it is evaluated and treated immediately by a veterinarian and a report is provided by the veterinarian doing the evaluation. If the vet determines the bull is no longer a fertile and mobile breeder, the following formula will be used to determine credit issued on a future purchase: purchase price – salvage value - \$2,500 (if injury related) = credit.

Volume Discount:

If you purchase five or more bulls in one year, you will receive 5% off the price of each bull.

Sight Unseen Purchases:

If you can't attend the sale and you want to buy call Dustin Rippe about your different purchasing options. We handle several customers bull purchases each year. If the bulls don't meet your approval when we unload them, you don't own them.

Delivery & Trucking:

Free delivery within 300 miles of Hubbell, NE. For all bulls further than 300 miles, we will make every effort to accommodate the buyer. Delivery will not exceed \$300/bull to a central location. Any bull taken on sale day, we will deduct \$100 from the bill.

Transfers:

Registration papers will be transferred upon request.

Liability:

Neither the sale host, sale facility, sale management, nor the auctioneer assumes any liability for any accidents that may occur.

Genetic Information:

All lots have had a HD 50K test, and the EPD's listed reflect the 50k enhancement. The test verifies parentage and increases predictability. All animals are tested free of any known genetic defect.

ET Bulls:

The ET bulls are raised by a surrogate mother. Therefore, the bulls actual birth weight and weaning weight are not a representation of the bulls genetics. Consequently, we have chosen not to provide this information as it is inaccurate. EPDs do a much better job of showing the genetic value of these bulls.

American Gelbvieh Association FPI INDEX

FPI™: An economic selection index, which stands for feeder profit index, is designed to aid producers in selecting sires whose progeny will perform in the feedlot and are sold on a grade and yield standpoint. Well ranking sires for FPI have higher marbling and carcass weight than their contemporaries. As a terminal index, little emphasis is put on maternal traits such as stayability and calving ease.

Rippe Gelbvieh Balancer® and Gelbvieh Bull Sale:

Black Balancer Bulls Lots 1-88
 Black Purebred Bulls Lots 89-104
 Angus Bulls Lots 200-213

Roode Feedyard (RF) Index

I sat down this summer and decided to build my own terminal index. It would compare very closely with Gelbvieh's Feeder Profit Index and Angus \$Beef Index. The major difference is how much real world data is the RF Index. I utilized all the carcass data from Roode Feedyard for the past 5 years and the performance data. In addition, all the cowherd data we have collected. We also used our own negotiated grid that we have with JBS. It is as good of an index for a commercial producer in the midwest that feeds out their cattle as there is in the industry. Please feel free to call Dustin to go over any information in this index. We will be putting more emphasis on this index than FPI and \$B in the future.

Most Widely Used Gelbvieh & Balancer Sires in 2024

Name	RF Index
TPG FRONTRUNNER 2510F	108
ALL AMERICAN J109.....	126
GENERAL PATTON 213B97 ET.....	42
HILLE STOCK OPTIONS D410	126
TRADE SECRET 253G486	63
JUST N TIME 714J.....	128
BTBR SAGUARO 8111F ET.....	143
MR DESPERADO 0085H.....	159
RINGGOLD 9700G ET	130
RELENTLESS 170H281.....	133
Average	116
Rippe Balancer Average.....	164
Rippe Purebred Average	118

DVAuction
www.dvauction.com

Watch & Bid online for FREE!

Can't make the sale?
 Let DVAuction bring the sale to you!
 Busy during the sale?
 Let DVAuction represent your bid!

Visit www.dvauction.com and Register!

It's as easy as 1, 2, 3...

1. Create an account at www.dvauction.com under the "create new account" tab
2. Apply for bidding by clicking "apply for bidding" in the upper left corner of your screen, at least 24 hours prior to the auction
3. Tune into the sale and make your purchases!

For General Questions Please Contact Our Office:
 (402) 316-5460 or support@dvauction.com

*High Speed Internet Access Required

About the Catalog:

Color

Black
 Red
 Homozygous Black
 Heterozygous Black

Polled Status

Polled
 Horned
 Scurred
 Homozygous Polled
 Heterozygous Polled

Breed Makeup

BA = Balancer
 GV = Gelbvieh
 HB = Hybrid
 50 = % Gelbvieh



Tattoo Reg# Color Polled BA50



GRAND SIRE

BW: ET

GRAND DAM

Adj. WW: ET



MATERNAL GRAND SIRE

RF INDEX

MATERNAL GRAND DAM

156

GE-EPD	CED	BW	WW	YW	MK	CEM
Rank %						
	HP	PG30	ST	REA	MB	FPI
Rank %						

AOD: Dam Wt: %BWW: Udder: Doc:

Cow Data

AOD = Age of Dam
 Dam Wt = Cow weight 6 weeks after weaning
 %BWW = Percent the dam weaned of her body weight
 DOC = Docility

EPDs

Expected progeny differences. Winter 2023 evaluation provided by the AGA



Sire verified Dam verified

Homozygous:

If an animal is homozygous for polled or black, you will not have a horned or red calf born out of this sire. If an animal is heterozygous, it carries one allele for either horned/polled or red/black.

Heifer Bulls

If you see a bull with an Rippe Gelbvieh believes it is a heifer bull.

Udder:

The first number is suspension and second references teat size. 9 is ideal. It represents very small teat size and very tight udder suspension. 1 represents very large, ballooned shape teat and a very pendulous suspension.

Doc = Docility:

1 - The bull is content standing alone. 2 - The bull is nervous when standing in a pen alone. 3 - The bull is looking for a hole in the fence when alone. 4 - The bull is looking to chase you out of the pen.

Percent Gelbvieh:

We rounded every bull to the nearest 1/8 in Gelbvieh percentage.

Catalog designed by: Lynn Valentine

BLACK BALANCER®

We have continued to use some of the top AI bulls in the industry to produce our balancer bulls. We have as many F1 Balancer bulls as anyone in the country. Angus sires include: Man In Black, Conclusion, Wildcat, Commerce, Voyage, Testament, Rise Above, Basin Jefferson, and Dynamic. The Balancer bulls out of Balancer sires are the following: Mountain Rain, Rock, Preference, Kingston, and OZ. Our Embryo transfer program shines through with 51% of the offering either an ET calf or the Dam being an ET in the last two maternal generations. The average percentile rank is top 15% Calving Ease, 5% Weaning Weight, 15% Marbling, 2% Feeder Profit Index. Out of the top 100 Balancer bulls for Feeder Profit Index born in the fall of 2023 and the spring of 2024, Rippe Gelbvieh has 23 of them. Ranking #1 in the breed with second place at 15. We have an elite set of Balancer bulls ready for your program. Lots 1 through 21 are Age Advantage bulls. These bulls are 18 months old, and they are ready to cover a large set of cows.



LOT 1 • 3511L

LOT 1
3511L Homo Blk Homo Polled
 Reg# AMGV1585841 DOB: 8/10/2023 BA50

- ✓ LAR MAN IN BLACK BW: ET
 JMB MAXINE TG 2131 Adj. WW: ET
- ✓ DBRG TWISTER 451B
- ✓ DBRG MS TWISTER 8167F ET **RF INDEX**
 DBRG MS EXCLUSIVE 560C ET 156

GE-EPD	CED	BW	WW	YW	MK	CEM
Y	16.7	-1.8	91	151	24	9
Rank %	10	25	3	2	45	15
HP	PG30	ST	CW	REA	MB	FPI
5.35	1.48	13.9	56	0.41	0.43	97.93
65	40	55	10	75	35	4

AOD: 5 Dam Wt:ET %BWW: ET Udder: ET Doc: 1

Age Advantage bull out of our donor 8167. We have already registered 89 progeny out of this donor and more coming this spring. This lot 1 bull is long bodied and very sound structured. He will add pounds to anyone's calf crop ranking in the top 4% for weaning weight. He also ranks in the top 4% for FPI.

LOT 3
3507L Homo Blk Homo Polled
 Reg# AMGV1584942 DOB: 8/8/2023 BA25

- ✓ V A R K C F BENNETT SUMMATION BW: 55
 CONCLUSION 0234 Adj. WW: 667
 SANDPOINT BLACKBIRD 8809
- ✓ DBRG MS NEVADA 6312D **RF INDEX**
 BTBR BTBR NEVADA 1170Y 196
 DBRG 2106Z ET

GE-EPD	CED	BW	WW	YW	MK	CEM
Y	19.4	-3.5	86	137	24	10
Rank %	2	10	10	10	45	10
HP	PG30	ST	CW	REA	MB	FPI
5.77	0.55	14.1	54	0.25	0.83	106.79
50	40	55	10	95	1	1

AOD: 7 Dam Wt:1336 %BWW: 49.93% Udder: 88 Doc: 1

Deep bodied and attractive describe this Conclusion son. Look at the EPD spread on this herd bull. Top 2% calving ease, 10% birth weight, while still being top 10% for weaning weight. It is very difficult to achieve those type of curve benders. This bull comes from a 7-year-old dam with a great udder. FPI is in the top 1% of the breed and the RF index is at 196. Keep the daughters and feed the steers. This bull is the 22nd highest FPI bull born in the balancer breed in the fall of 23 and spring of 24.

LOT 2
3502L Homo Blk Homo Polled
 Reg# AMGV1584939 DOB: 8/5/2023 BA50

- ✓ DBRG S A V RAINFALL 6846 BW: 72
 MR MOUNTAIN RAIN 1095J Adj. WW: 627
 DBRG MS OUTLOOK 468B
- ✓ DBRG DLW GRAND PLAN 112A **RF INDEX**
 MS GRAND PLAN 5563C 79
 DBRG MS WATCHMAN 109Y

GE-EPD	CED	BW	WW	YW	MK	CEM
Y	17	-2.3	77	119	28	10
Rank %	10	15	35	40	15	10
HP	PG30	ST	CW	REA	MB	FPI
5.34	0.44	10.1	21	0.25	0.31	87.2
65	70	95	90	95	65	30

AOD: 8 Dam Wt:1341 %BWW: 46.76% Udder: 66 Doc: 1

We have continued to use Mountain Rain as he makes exceptional females. The feet and fertility advantages with Mountain Rain cattle are unmatched in the beef industry. Heifer bull that weaned off his 8-year-old dam at 47% of her body weight. Top 10% calving ease, 35% weaning weight, 30% FPI.



**CONCLUSION
 SIRE OF LOT 3**

LOT 4

3510L Homo Blk Homo Polled
Reg# AMGV1584944 DOB: 8/10/2023 BA25

✓ E & B WILDCAT 9402
E&B LADY PLUS 643

BW: 84
Adj. WW: 711

✓ DBRG MR PAYWEIGHT 710E
DBRG MS 710E 0552H
DBRG MS BLK GRANITE 7312E ET

RF INDEX
175

GE-EPD	CED	BW	WW	YW	MK	CEM
Y	16	-0.8	93	155	29	8
Rank %	15	45	2	2	10	30
HP	PG30	ST	CW	REA	MB	FPI
6.81	-0.25	12.7	65	0.58	0.47	99.13
40	70	70	2	40	30	3

AOD: 3 Dam Wt:1340 %BWW: 53.06% Udder: 88 Doc: 1

Long and deep bodied bull that is heavy muscled. This bull is the complete package. His dam has a gorgeous udder and weaned this bull at 711 pounds, which was 53% of her body weight. In addition, he ranks in the top 2% of the breed for weaning weight, 2% carcass weight, 3% FPI. RF Index at 175.



WILDCAT SIRE OF LOT 4

LOT 5

3512L Homo Blk Homo Polled
Reg# AMGV1584945 DOB: 8/10/2023 BA25

✓ DEER VALLEY GROWTH FUND
DEER VALLEY HEDGE FUND
DEER VALLEY BARBARA 514

BW: 67
Adj. WW: 675

✓ DBRG MR CAPTAIN 939G
DBRG MS CAPTAIN 1577J
DBRG MS EPIC 8503F

RF INDEX
150

GE-EPD	CED	BW	WW	YW	MK	CEM
Y	18	-2	79	134	26	10
Rank %	5	20	25	15	25	10
HP	PG30	ST	CW	REA	MB	FPI
8.2	1.17	16.6	49	0.07	0.53	93.28
30	40	20	20	>95	20	10

AOD: 2 Dam Wt:1414 %BWW: 47.74% Udder: 78 Doc: 1

Deep bodied, thick made, and sound structured describe this Hedge Fund heifer bull. Look at the birth to growth spread in this bull. This bull is ready for a large set of heifers. He ranks in the top 5% calving ease, 20% birth weight, 25% weaning weight, 15% yearling weight, 20% carcass weight, 20% marbling, 10% FPI.



LOT 6

3513L Homo Blk Homo Polled
Reg# AMGV1584946 DOB: 8/10/2023 BA50

✓ DBRG S A V RAINFALL 6846
MR MOUNTAIN RAIN 1095J
DBRG MS OUTLOOK 468B

BW: 70
Adj. WW: 615

✓ DBRG LD CAPITALIST 316
MS LD CAPITALIST 0130H ET
DBRG MS EXCLUSIVE 576C ET

RF INDEX
120

GE-EPD	CED	BW	WW	YW	MK	CEM
Y	13.1	-1.6	76	115	29	8
Rank %	50	25	35	50	10	30
HP	PG30	ST	CW	REA	MB	FPI
7.69	0.28	11.9	36	0.46	0.42	87.79
30	70	85	50	65	40	30

AOD: 3 Dam Wt:1406 %BWW: 43.74% Udder: 88 Doc: 1

This bull goes back to a Dam of Distinction in 576C. This cow family combined with Mountain Rain will leave you with a herd of great females. This bull is very sound structured, deep bodied, and attractive. His dam has a gorgeous udder. Top 25% Birth weight, 30% FPI. If you are serious about building a cowherd of great females, look at this bull.

LOT 7

3516L Homo Blk Homo Polled
Reg# AMGV1584948 DOB: 8/11/2023 BA25

✓ V A R CONCLUSION 0234
SANDPOINT BLACKBIRD 8809

BW: 79
Adj. WW: 679

✓ DBRG MS KG JUSTIFIED 0504H
DBRG MS FH GRANITE 8547F

RF INDEX
154

GE-EPD	CED	BW	WW	YW	MK	CEM
N	17.6	-2	79	146	27	10
Rank %	5	20	25	4	20	10
HP	PG30	ST	CW	REA	MB	FPI
6.83	1.12	16	47	0.34	0.59	100.41
40	40	30	25	85	10	2

AOD: 3 Dam Wt:1333 %BWW: 50.94% Udder: 88 Doc: 2

These KG Justified females are turning out to be excellent females. This big framed, and long bodied bull weaned off his dam at 51% of her body weight. He is a heifer bull with a jaw dropping birth to growth spread. He ranks in the top 5% calving ease, 20% birth weight, 25% weaning weight, 4% yearling weight, 25% carcass weight, 10% marbling, 2% FPI.



LOT 8

3517L Homo Blk Homo Polled
Reg# AMGV1584949 DOB: 8/11/2023 BA50

✓ DBRG MUSGRAVE 316 STUNNER
MR STUNNER 1104J ET
DBRG MS HILLEX102 584C ET

BW: 68
Adj. WW: 714

✓ DBRG MR PAYWEIGHT 710E
MS 710E 1528J
DBRG MS ALLIED 9502G

RF INDEX
146

GE-EPD	CED	BW	WW	YW	MK	CEM
Y	17.8	1.3	91	162	32	9
Rank %	4	85	3	1	2	15
HP	PG30	ST	CW	REA	MB	FPI
7.36	-0.2	10.1	66	0.87	0.14	89.19
40	70	95	2	4	95	25

AOD: 2 Dam Wt:1411 %BWW: 50.60% Udder: 88 Doc: 1

Big framed and heavy muscled describe this performance-oriented herd bull. Everywhere I go, we sell them by the pound and this bull will add pounds to your calf crop. His granddam, 9502 is a Dam of Merit. This bull ranks in the top 4% calving ease, 3% weaning weight, 1% yearling weight, 2% carcass weight, 4% marbling, 25% FPI.

LOT 9

3524L Homo Blk Het Polled
 Reg# AMGV1587884 DOB: 8/13/2023 BA50

✓ GAR SUNBEAM
 CONNEALY COMMERCE
 AVIRA OF CONANGA 814R

BW: 70
 Adj. WW: 625

✓ WFA FLYING H GRANITE 7Z
 DBRG MS FH GRANITE 8547F
 DBRG MR PRIDE 6538D

RF INDEX
 157

GE-EPD	CED	BW	WW	YW	MK	CEM
Y	19.8	-2.4	84	135	26	15
Rank %	1	15	15	15	25	1
HP	PG30	ST	CW	REA	MB	FPI
7.97	1.82	16.6	54	0.82	0.42	95.46
30	20	20	10	10	40	10

AOD: 5 Dam Wt:1321 %BWW: 47.31% Udder: 67 Doc: 1

I am excited to offer these Connealy Commerce sons. They come easy, grow well, have great marbling, and should make excellent females. This moderately framed heifer bull ranks in the top 1% calving ease, 15% weaning and yearling weight, 10% ribeye, 10% FPI. RF Index at 157.

LOT 11

3530L Homo Blk Homo Polled
 Reg# AMGV1584955 DOB: 8/16/2023 BA50

✓ GAR DISCOVERY 6737H
 E & B WILDCAT 9402
 E&B LADY PLUS 643

BW: 77
 Adj. WW: 685

✓ LWHF PURE-PRIDE 564Z
 DBRG MS PRIDE 5515C
 DBRG MISS 746T ET

RF INDEX
 131

GE-EPD	CED	BW	WW	YW	MK	CEM
Y	17.9	0.3	88	146	24	10
Rank %	4	70	10	4	45	10
HP	PG30	ST	CW	REA	MB	FPI
3.42	0.49	12	46	0.72	0.35	92.59
85	70	85	25	15	55	15

AOD: 8 Dam Wt:1395 %BWW: 49.10% Udder: 88 Doc: 1.5

Not many seedstock suppliers put emphasis on the female and track the cow weight, udder score, and % body weight weaned. The females are important to Rippe Gelbvieh. This bull is out of an 8-year-old cow who has a gorgeous udder. Look at the EPD spread. Top 4% calving ease, 10% weaning weight, 4% yearling weight, 15% ribeye, 15% FPI.

LOT 12

3539L Homo Blk Homo Polled
 Reg# AMGV1584958 DOB: 8/18/2023 BA50

✓ BASIN PAYWEIGHT 1682
 DBRG MR PAYWEIGHT 710E
 DBRG MS HILLEX102 584C ET

BW: 90
 Adj. WW: 668

✓ DBRG WCR 59
 DBRG MS WCR59 849F
 DBRG MS CAVALRY 456B

RF INDEX
 152

GE-EPD	CED	BW	WW	YW	MK	CEM
Y	14.3	1.4	80	126	29	8
Rank %	35	90	25	25	10	30
HP	PG30	ST	CW	REA	MB	FPI
9.33	0.99	10.8	47	0.45	0.57	90.48
20	40	90	20	65	15	20

AOD: 5 Dam Wt:1405 %BWW: 47.54% Udder: 88 Doc: 1

710E son out of a 5-year-old cow with a gorgeous udder. This is a more moderate framed and deep bodied bull. He ranks in the top 25% weaning weight, 25% yearling weight, 15% marbling, 20% FPI.

LOT 10

3529L Homo Blk Homo Polled
 Reg# AMGV1584954 DOB: 8/15/2023 BA50

✓ SAV RAINFALL 6846
 DBRG MR MOUNTAIN RAIN 1095J
 DBRG MS OUTLOOK 468B

BW: 88
 Adj. WW: 717

✓ SITZ ALPINE 11076
 DBRG MS ALPINE 0163H
 DBRG MS ALUMNI 583C

RF INDEX
 164

GE-EPD	CED	BW	WW	YW	MK	CEM
Y	13.2	-0.3	82	134	31	9
Rank %	50	55	20	15	3	15
HP	PG30	ST	CW	REA	MB	FPI
6.75	-0.79	12.2	59	0.52	0.47	90.95
40	90	85	4	50	30	20

AOD: 3 Dam Wt:1556 %BWW: 46.08% Udder: 77 Doc: 1

This Mountain Rain bull is a tank. He is sound structured, deep bodied, and should produce an excellent set of females. This bull weaned off his dam at 717 pounds and ranks in the top 20% weaning weight, 15% yearling weight, 4% carcass weight, 20% FPI.



LOT 10 • 3529L



**MR PAYWEIGHT 710E
 SIRE OF LOT 12**

LOT 14

3545L Homo Blk Scurred
 Reg# AMGV1584962 DOB: 8/19/2023 BA50

✓ V A R CONCLUSION 0234 SANDPOINT BLACKBIRD 8809
 BW: 90
 Adj. WW: 704

✓ DBRG MS DESTINATION 0241H DOB: 8/19/2023
 SKF DUNN'S DESTINATION 029E
 DBRG MS OUTLOOK 4192B
RF INDEX
 168

GE-EPD	CED	BW	WW	YW	MK	CEM
Y	11	0.7	94	163	28	5
Rank %	80	75	2	1	15	80
HP	PG30	ST	CW	REA	MB	FPI
6.21	1.29	15.3	63	0.46	0.53	97.75
50	40	40	3	65	20	4

AOD: 3 Dam Wt:1494 %BWW: 47.12% Udder: 88 Doc: 1

This bull goes back to the 4192B cow who is a Dam of Distinction. This is a big framed, long bodied, and high performing bull. RF index is a 168. This bull will add pounds and frame to anyone's calf crop. He ranks in the top 2% for weaning weight, 1% yearling weight, 3% carcass weight, 4% FPI.

LOT 15

3546L Homo Blk Homo Polled
 Reg# AMGV1584963 DOB: 8/19/2023 BA25

✓ MGR TREASURE SJH IMPRESSION
 V A R DISCOVERY 2240
 BW: 69
 Adj. WW: 715

✓ DBRG MS RAINFALL 1518J DOB: 8/19/2023
 S A V RAINFALL 6846
 DBRG MS TWISTER 9517G ET
RF INDEX
 159

GE-EPD	CED	BW	WW	YW	MK	CEM
Y	13.1	-1.5	90	156	25	11
Rank %	50	30	4	1	35	3
HP	PG30	ST	CW	REA	MB	FPI
7.2	-0.68	13.8	47	0.38	0.68	102.48
40	90	55	20	80	5	2

AOD: 2 Dam Wt:1176 %BWW: 60.80% Udder: 77 Doc: 1

Moderately framed and deep bodied describe this Treasure son out of a Rainfall daughter. This bull started at 69 pounds and weaned off at 715 pounds. He weaned off his dam at 60% of her body weight. This bull ranks in the top 4% weaning weight, 1% yearling weight, 5% marbling, 2% FPI.

LOT 16

3549L Homo Blk Homo Polled
 Reg# AMGV1587887 DOB: 8/20/2023 BA50

✓ CONNEALY COMMERCE AVIRA OF CONANGA 814R
 BW: 80
 Adj. WW: 720

✓ DBRG MS DESTINATION 9556G DOB: 8/20/2023
 SKF DUNN'S DESTINATION 029E
 DBRG MS PRIDE 5562C
RF INDEX
 169

GE-EPD	CED	BW	WW	YW	MK	CEM
Y	18	-1.4	93	156	30	14
Rank %	4	30	2	1	4	1
HP	PG30	ST	CW	REA	MB	FPI
5.77	0.79	14	53	0.78	0.56	103.78
50	40	55	10	10	15	1

AOD: 4 Dam Wt:1415 %BWW: 50.88% Udder: 88 Doc: 2

Big framed, long bodied, and sound structured describe this Commerce son out of a Dam of Merit cow in 9556G. This is a bigtime spread bull that ranks in the top 4% calving ease, 2% weaning weight, 1% yearling weight, 10% ribeye, 15% marbling, 1% FPI. You can drive the wheels off your pickup looking for another bull with those figures. This bull is the 70th highest FPI bull born in the balancer breed in the fall of 23 and spring of 24.



TREASURE
SIRE OF LOT 15

LOT 17

3554L Homo Blk Homo Polled
 Reg# AMGV1584967 DOB: 8/22/2023 BA25

✓ V A R CONCLUSION 0234 SANDPOINT BLACKBIRD 8809
 BW: 73
 Adj. WW: 616

✓ DBRG MS PAYWEIGHT 7621E DOB: 8/22/2023
 BASIN PAYWEIGHT 1682
 DBRG MS ALUMNI 5520C
RF INDEX
 172

GE-EPD	CED	BW	WW	YW	MK	CEM
Y	14.1	-0.7	99	165	24	8
Rank %	35	45	1	1	45	30
HP	PG30	ST	CW	REA	MB	FPI
7.37	2.54	13.8	63	0.84	0.51	102.78
40	5	55	3	5	20	2

AOD: 6 Dam Wt:1571 %BWW: 39.21% Udder: 87 Doc: 1

Big framed, sound structured, and deep bodied describe this bull that is flat good. If you are serious about raising sale topping feeder cattle or feed out your cattle, take a look at this bull. RF Index is 172, which is over 50 points higher than the most widely used bulls in the breed. He also ranks in the top 1% for both weaning and yearling weight, 3% carcass weight, 5% ribeye, 20% marbling, 2% FPI. This bull is the 91st highest FPI bull born in the balancer breed in the fall of 23 and spring of 24.



STRATTON LOVES PLAYING WITH EQUIPMENT.

LOT 18

3555L Homo Blk Homo Polled
 Reg# AMGV1584968 DOB: 8/22/2023 BA25

✓ G A R SUNBEAM
 CONNEALY COMMERCE
 AVIRA OF CONANGA 814R

BW: 82
 Adj. WW: 732

✓ DBRG MS ALLIED 9502G
 DBRG MR PRIDE 6538D

RF INDEX
 217

GE-EPD	CED	BW	WW	YW	MK	CEM
Y	15.9	-0.2	98	162	31	13
Rank %	15	55	1	1	3	1
HP	PG30	ST	CW	REA	MB	FPI
7.62	0.47	15.7	68	0.71	0.8	110.12
30	70	30	1	15	2	1

AOD: 4 Dam Wt:1556 %BWW: 47.04% Udder: 88 Doc: 1

Deep bodied, moderately framed, and sound structured describe this Commerce son. His dam, 9502G is a Dam of Merit who has a perfect udder. This bull ranks in the top 1% of the breed for weaning and yearling weight, 1% carcass weight, 2% marbling, 1% FPI. This bull is the 11th highest FPI bull born in the balancer breed in the fall of 23 and spring of 24. RF Index of 217 is off the charts. High End Genetic bull here.



COMMERCE
SIRE OF LOT 18

LOT 19

3559L Homo Blk Homo Polled
 Reg# AMGV1584969 DOB: 8/24/2023 BA25

✓ V A R CONCLUSION 0234
 SANDPOINT BLACKBIRD 8809

BW: 83
 Adj. WW: 702

✓ DBRG MS YOGI 6583D
 DBRG MISS BLACK CROSS 814U

RF INDEX
 223

GE-EPD	CED	BW	WW	YW	MK	CEM
Y	14.5	-1.2	89	155	26	7
Rank %	35	35	5	2	25	45
HP	PG30	ST	CW	REA	MB	FPI
3.44	1.74	15.3	72	0.42	0.82	105.12
85	20	40	1	70	2	1

AOD: 7 Dam Wt:1604 %BWW: 43.77% Udder: 88 Doc: 1

Bigtime spread bull that weaned off his dam at 702 pounds and she has a picture-perfect udder. There is a lot of performance and carcass merit built into this bull. This bull is tied for the highest RF index in the entire sale. This is the type of bull whose offspring will do it all on my grid with JBS. This bull ranks in the top 5% weaning weight, 2% yearling weight, 1% carcass weight, 2% marbling, 1% FPI.



MATERNAL SIB OF LOT 20
SOLD TO RIVERSIDE RANCH IN OUR
2024 SALE

LOT 20

3560L Homo Blk Homo Polled
 Reg# AMGV1587888 DOB: 8/25/2023 BA50

✓ G A R SUNBEAM
 CONNEALY COMMERCE
 AVIRA OF CONANGA 814R

BW: 68
 Adj. WW: 649

✓ DBRG MS ALUMNI 7231E ET
 BTBR MS BLACK CROSS 6044

RF INDEX
 164

GE-EPD	CED	BW	WW	YW	MK	CEM
Y	20.4	-1.8	90	144	30	14
Rank %	1	25	4	5	4	1
HP	PG30	ST	CW	REA	MB	FPI
5.98	0.66	13.9	49	0.83	0.55	102.66
50	40	55	15	10	15	2

AOD: 6 Dam Wt:1403 %BWW: 46.26% Udder: 78 Doc: 1

The dam of this bull is simply a great producer. She has an average weaning ratio of 102 on 5 calves. Look at the EPD spread this bull possesses. This heifer bull ranks in the top 1% calving ease, 25% birth weight, 4% weaning weight, 5% yearling weight, 10% ribeye, 15% marbling, 2% FPI.

**LOT 21**

3570L Homo Blk Het Polled
 Reg# AMGV1585811 DOB: 9/2/2023 BA50

✓ V R T LAZY TV ROCK G501
 VRT LAZY TV MS COLLEGIAN E422

BW: 70
 Adj. WW: 719

✓ DBRG MS 710E 1503J
 DBRG MS ALLIED 9501G

RF INDEX
 182

GE-EPD	CED	BW	WW	YW	MK	CEM
Y	19.5	-1.3	86	140	30	9
Rank %	1	35	10	10	4	15
HP	PG30	ST	CW	REA	MB	FPI
8.62	1.58	15	49	0.65	0.72	103.49
20	20	40	15	25	4	1

AOD: 2 Dam Wt:1491 %BWW: 48.22% Udder: 88 Doc: 1

Rock was a good find from the Thorstenson program. This bull is a 7 for 7 bull, as he was born in the 70's and weaned off in the 700's. This bull has an RF index of 182. Look at the EPD profile this bull. Top 1% calving ease, 10% weaning and yearling weight, 15% carcass weight, 25% ribeye, 4% marbling, 1% FPI. This bull is the 79th highest FPI bull born in the balancer breed in the fall of 23 and spring of 24.

LOT 22

4006M Homo Blk Homo Polled
 Reg# AMGV1601846 DOB: 1/18/2024 BA50

✓ BALDRIDGE ALTERNATIVE E125 BW: 77
 ✓ DBRG PREFERENCE 2141K ET Adj. WW: 740
 DBRG MS TWISTER 8167F ET

✓ DEER VALLEY HEDGE FUND
 ✓ DBRG MS HEDGE FUND 2072K RF INDEX 98
 DBRG MS 489B ET 7289E

GE-EPD	CED	BW	WW	YW	MK	CEM
Y	16.9	-0.8	86	135	24	9
Rank %	10	45	10	15	45	15
HP	PG30	ST	CW	REA	MB	FPI
8.36	2.3	15.6	31	0.42	0.31	90.88
30	20	30	70	70	65	20

AOD: 2 Dam Wt:1260 %BWW: 58.73% Udder: 88 Doc: 2

7 for 7 bull out of Preference. Preference was purchased from us by Post Rock Gelbvieh. This bull does a lot of things right as he is big framed, sound structured, and deep bodied. Weaned off his dam at 59% of her body weight while nursing a great udder. This bull ranks in the top 10% calving ease, 10% weaning weight, 15% yearling weight, 20% FPI.

LOT 23

4010M Homo Blk Het Polled
 Reg# AMGV1601849 DOB: 1/19/2024 BA50

✓ BALDRIDGE ALTERNATIVE E125 BW: 68
 ✓ DBRG PREFERENCE 2141K ET Adj. WW: 748
 DBRG MS TWISTER 8167F ET

✓ SA V RAINFALL 6846
 ✓ DBRG MS RAINFALL 2247K RF INDEX 129
 DBRG MS OUTLOOK 4192B

GE-EPD	CED	BW	WW	YW	MK	CEM
Y	17.7	-1	87	137	24	11
Rank %	4	40	10	10	45	3
HP	PG30	ST	CW	REA	MB	FPI
8.83	0.75	14.2	35	0.23	0.55	97.22
20	40	55	55	95	15	5

AOD: 2 Dam Wt:1280 %BWW: 58.44% Udder: 88 Doc: 1

Deep bodied Preference son who traces back to a Dam of Distinction cow in 4192B. This bull is very balanced in his EPD profile as he ranks in the top 4% calving ease, 10% weaning and yearling weight, 15% marbling, 5% FPI.

LOT 25

4017M Homo Blk Homo Polled
 Reg# AMGV1601855 DOB: 1/22/2024 BA50

✓ CONNEALY EMERALD BW: 72
 ✓ TAU OZ 77K ET Adj. WW: 735
 TAU MS SAMMY 385A

✓ VRT LAZY TV ROCK G501
 ✓ DBRG MS ROCK 2176K RF INDEX 176
 DBRG MS FRANCHISE 0179H

GE-EPD	CED	BW	WW	YW	MK	CEM
Y	14.7	0.7	86	141	27	6
Rank %	25	75	10	10	20	65
HP	PG30	ST	CW	REA	MB	FPI
6.8	1.8	14.7	52	0.53	0.72	98.54
40	20	40	10	50	4	3

AOD: 2 Dam Wt:1020 %BWW: 72.06% Udder: 99 Doc: 1

7 for 7 bull. Look at this. This bull weaned off his dam at 72% of her body weight. I believe the cattle industry should continue to look for efficient cattle at both the ranch and in the feedlot. Why don't more people measure efficiency? This bull ranks in the top 25% calving ease, 10% weaning and yearling weight, 10% carcass weight, 4% marbling, 3% FPI.



PREFERENCE SIRE OF LOTS 22 & 23

LOT 24

4011M Homo Blk Homo Polled
 Reg# AMGV1601850 DOB: 1/20/2024 BA38

✓ CONNEALY EMERALD BW: 62
 ✓ TAU OZ 77K ET Adj. WW: 655
 TAU MS SAMMY 385A

✓ DEER VALLEY HEDGE FUND RF INDEX 157
 ✓ DBRG MS HEDGE FUND 2015K
 DBRG MS WCR59 0015H

GE-EPD	CED	BW	WW	YW	MK	CEM
Y	17.6	-2.8	75	122	24	9
Rank %	4	10	40	30	45	15
HP	PG30	ST	CW	REA	MB	FPI
8.97	0.91	13.7	45	0.77	0.58	93.7
20	40	55	25	10	15	10

AOD: 2 Dam Wt:1171 %BWW: 55.94% Udder: 99 Doc: 1

This is our first set of calves out of OZ, who we purchased from Taubenhein's. This heifer bull weaned off his dam at 56% of her body weight while nursing a great udder. Top 4% Calving Ease, 10% birth weight, 10% ribeye, 15% marbling, 10% FPI.



LOT 25 • 4017M

LOT 26

4019M Homo Blk Homo Polled
Reg# AMGV1601857 DOB: 1/22/2024 BA50

✓ BAR R JET BLACK BW: 64
LAR MAN IN BLACK Adj. WW: 701
JMB MAXINE TG 2131

✓ SKF DUNN'S DESTINATION 029E RF INDEX
DBRG MS DESTINATION 2073K 173
DBRG MS PAY DAY 920G

GE-EPD	CED	BW	WW	YW	MK	CEM
Y	19	-3.6	73	124	28	10
Rank %	2	5	50	30	15	10
HP	PG30	ST	CW	REA	MB	FPI
6.44	1.15	15.4	53	0.47	0.6	94.44
50	40	40	10	60	10	10

AOD: 2 Dam Wt:1038 %BWW: 67.53% Udder: 88 Doc: 1

Man in Black is a bull we found at stud and admired his combination of phenotype and EPD profile. This bull was born in the 60's, weaned off in the 700's and 68% of his dam's weight who had a great udder. I would say he jumped through every hoop. Heifer bull who ranks in the top 2% calving ease, 5% birth weight, 10% carcass weight, 10% marbling, 10% FPI.



LOT 26 • 4019M

LOT 27

4021M Homo Blk Homo Polled
Reg# AMGV1601859 DOB: 1/23/2024 BA38

✓ G A R SUNBEAM BW: 59
CONNEALY COMMERCE Adj. WW: 676
AVIRA OF CONANGA 814R

✓ DBRG MR DESPERADO 0085H RF INDEX
DBRG MS DESPERADO 2148K 207
DBRG MS WCR59 0008H

GE-EPD	CED	BW	WW	YW	MK	CEM
Y	20.1	-3	89	153	28	14
Rank %	1	10	5	2	15	1
HP	PG30	ST	CW	REA	MB	FPI
6.52	1.27	11.1	66	0.78	0.69	106.29
40	40	90	2	10	5	1

AOD: 2 Dam Wt:1055 %BWW: 64.08% Udder: 98 Doc: 1

Sound structured, thick made, and deep bodied describe this bull whose granddam is a Dam of Merit. Look at the curve bending EPD's in this bull. Top 1% calving ease, 10% birth weight, 5% weaning weight, 2% yearling weight, 2% carcass weight, 10% ribeye, 5% Marbling, 1% FPI. That was a mouthful. This bull is the 33rd highest FPI bull born in the balancer breed in the fall of 23 and spring of 24. Over 200 for RF Index.

LOT 28

4022M Homo Blk Scurred
Reg# AMGV1601860 DOB: 1/23/2024 BA25

✓ S S ODYSSEY H71 BW: 71
S S VOYAGE Adj. WW: 699
S S MISS RITA 4P26 P810

✓ DBRG MS HOMELAND 56H ET RF INDEX
DBRG MS HOMELAND 2193K 223
DBRG MS NEVADA 550C

GE-EPD	CED	BW	WW	YW	MK	CEM
Y	14.4	0.9	103	156	29	8
Rank %	35	80	1	1	10	30
HP	PG30	ST	CW	REA	MB	FPI
6.13	1.29	13.6	74	0.44	0.78	108.97
50	40	55	1	65	2	1

AOD: 2 Dam Wt:1064 %BWW: 65.70% Udder: 88 Doc: 1

This bull is the 15th highest FPI bull born in the balancer breed in the fall of 23 and spring of 24. This bull is also tied for the highest RF index of any bull in the sale at 223. This bull weaned off his dam at 66% of her body weight. He ranks in the top 1% weaning and yearling weight, 1% carcass weight, 2% marbling, 1% FPI. Please text me when you sell the feeders out of this bull.

LOT 29

4023M Homo Blk Homo Polled
Reg# AMGV1601861 DOB: 1/23/2024 BA50

✓ BALDRIDGE ALTERNATIVE E125 BW: 81
DBRG PREFERENCE 2141K ET Adj. WW: 764
DBRG MS TWISTER 8167F ET

✓ DEER VALLEY HEDGE FUND RF INDEX
DBRG MS HEDGE FUND 2305K 186
DBRG MS DESTINATION 967G ET

GE-EPD	CED	BW	WW	YW	MK	CEM
Y	16.2	-2.2	84	138	24	9
Rank %	15	20	15	10	45	15
HP	PG30	ST	CW	REA	MB	FPI
9.85	2.11	13.9	54	0.55	0.69	101.05
15	20	55	10	45	5	2

AOD: 2 Dam Wt:1194 %BWW: 63.99% Udder: 88 Doc: 1

This is one of the biggest framed bulls in the sale. He weaned off his dam at 64% of her body weight and his granddam is a Dam of Merit and his great granddam is a Dam of Distinction. Keep the daughters here. Heifer bull that ranks in the top 15% calving ease, 20% birth weight, 15% weaning weight, 10% yearling weight, 10% carcass weight, 5% marbling, 2% FPI.



LOT 29 • 4023M

**LOT
30****4024M** Homo Blk Homo Polled
Reg# AMGV1601862 DOB: 1/23/2024 BA50✓ G A R SUNBEAM
CONNEALY COMMERCE
AVIRA OF CONANGA 814RBW: 84
Adj. WW: 789✓ DLW ARAPAHOE 207A
DBRG MS ARAPAHOE 2065K ET
DBRG MR BLK IMPACT 2100Z ETRF INDEX
139

GE-EPD	CED	BW	WW	YW	MK	CEM
Y	16.8	-1.7	101	158	28	12
Rank %	10	25	1	1	15	1
HP	PG30	ST	CW	REA	MB	FPI
4.89	-0.74	11.3	49	0.71	0.39	103.46
65	90	90	15	15	45	1

AOD: 2 Dam Wt:1165 %BWW: 67.73% Udder: 88 Doc: 1

This bull is the 66th highest FPI bull born in the balancer breed in the fall of 23 and spring of 24. This bull weaned off his dam at 789 pounds and 68% of her body weight and goes back to the great donor 2100Z. That is efficiency. This bull ranks in the top 10% calving ease, 1% weaning weight, 1% yearling weight, 15% carcass weight, 15% ribeye, 1% FPI.

**COMMERCE
SIRE OF LOT 30****LOT
31****4027M** Homo Blk Homo Polled
Reg# AMGV1601865 DOB: 1/24/2024 BA50✓ BALDRIDGE ALTERNATIVE E125
DBRG PREFERENCE 2141K ET
DBRG MS TWISTER 8167F ETBW: 72
Adj. WW: 806✓ DEER VALLEY HEDGE FUND
DBRG MS HEDGE FUND 2308K
DBRG MS 710E 9214GRF INDEX
168

GE-EPD	CED	BW	WW	YW	MK	CEM
Y	19.2	-2.5	93	149	24	10
Rank %	2	15	2	3	45	10
HP	PG30	ST	CW	REA	MB	FPI
10.04	2.09	16.1	63	0.56	0.38	99.1
15	20	30	3	40	50	3

AOD: 2 Dam Wt:1043 %BWW: 77.28% Udder: 89 Doc: 1

Big framed, deep, and long bodied describe this bull that is a 7 for 8 bull. Born in the 70's and weaned off in the 800's. He weaned off his dam at 77% of her body weight while nursing a great udder and his great granddam is a Dam of Merit. This bull ranks in the top 2% calving ease, 15% birth weight, 2% weaning weight, 3% yearling weight, 3% carcass weight, 3% FPI.

**LOT 31 • 4027M****LOT
32****4029M** Homo Blk Homo Polled
Reg# AMGV1601867 DOB: 1/24/2024 BA25✓ TEHAMA PATRIARCH F028
TEHAMA TESTAMENT
TEHAMA MARY BLACKBIRD E789BW: 72
Adj. WW: 666✓ TAU HOMELAND 56H ET
DBRG MS HOMELAND 2179K
DBRG MS EFFECTIVE 573C ETRF INDEX
153

GE-EPD	CED	BW	WW	YW	MK	CEM
Y	13.4	-1.4	77	132	24	8
Rank %	50	30	35	15	45	30
HP	PG30	ST	CW	REA	MB	FPI
7.27	1.15	13.7	43	0.59	0.67	94.26
40	40	55	30	35	5	10

AOD: 2 Dam Wt:1125 %BWW: 59.20% Udder: 88 Doc: 1

Thick, heavy muscled, and attractive describe this Testament son. He is sound structured and weaned off his dam at 59% of her body weight. This bull ranks in the top 35% weaning weight, 15% yearling weight, 5% marbling, 10% FPI.

**TESTAMENT
SIRE OF LOT 32**

LOT 33

4030M Homo Blk Homo Polled
Reg# AMGV1601868 DOB: 1/24/2024 BA50

✓ G R SUNBEAM
CONNEALY COMMERCE
AVIRA OF CONANGA 814R

BW: 79
Adj. WW: 779

✓ DLW ARAPAHOE 207A
DBRG MS ARAPAHOE 2059K ET
DBRG MR BLK IMPACT 2100Z ET

RF INDEX
177

GE-EPD	CED	BW	WW	YW	MK	CEM
Y	14.9	-0.8	97	150	28	11
Rank %	25	45	1	3	15	3
HP	PG30	ST	CW	REA	MB	FPI
4.89	-0.74	12.3	67	0.99	0.44	100.37
65	90	85	2	2	35	2

AOD: 2 Dam Wt:1106 %BWW: 70.43% Udder: 88 Doc: 1

Performance bull that is big framed and thick made. This is a 7 for 7 bull that goes back to the great 2100Z donor cow. This bull weaned off his dam at 70% of her body weight. Commerce son that ranks in the top 25% calving ease, 1% weaning weight, 3% yearling weight, 2% carcass weight, 2% ribeye, 2% FPI.

LOT 35

4036M Het Blk Homo Polled
Reg# AMGV1601873 DOB: 1/27/2024 BA50

✓ G R SUNBEAM
CONNEALY COMMERCE
AVIRA OF CONANGA 814R

BW: 78
Adj. WW: 775

✓ AWB TWIN VIEW HAMMER DOWN 12F
DBRG MS HAMMERDOWN 2093K
DBRG MS DESTINATION 0311H

RF INDEX
164

GE-EPD	CED	BW	WW	YW	MK	CEM
Y	16.6	-1.3	99	156	28	13
Rank %	10	35	1	1	15	1
HP	PG30	ST	CW	REA	MB	FPI
6.45	0.26	8.9	59	0.49	0.49	103.4
50	70	>95	4	55	25	1

AOD: 2 Dam Wt:1221 %BWW: 63.47% Udder: 88 Doc: 1

This bull is the 86th highest FPI bull born in the balancer breed in the fall of 23 and spring of 24. He is sound structured, big framed, and attractive. His granddam is a Dam of Merit. 7 for 7 bull that weaned off his dam at 63% of her body weight while nursing a great udder. Look at the EPD spread. Top 10% calving ease, 1% weaning and yearling weight, 4% carcass weight, 25% marbling, 1% FPI.

LOT 36

4037M Homo Blk Homo Polled
Reg# AMGV1601874 DOB: 1/27/2024 BA38

✓ G R SUNBEAM
CONNEALY COMMERCE
AVIRA OF CONANGA 814R

BW: 79
Adj. WW: 720

✓ MJBC FRANCHISE F806
DBRG MS FRANCHISE 2236K ET
DBRG MS NEVADA 738E

RF INDEX
156

GE-EPD	CED	BW	WW	YW	MK	CEM
Y	14.9	-0.8	93	150	27	11
Rank %	25	45	2	3	20	3
HP	PG30	ST	CW	REA	MB	FPI
5.42	-0.59	13.5	48	0.65	0.6	102.01
65	90	55	20	25	10	2

AOD: 2 Dam Wt:1056 %BWW: 68.18% Udder: 88 Doc: 1

7 for 7 bull whose granddam is the dam of Riptide a popular AI bull for Green Hills Gelbvieh. Riptide is the sire of the 60k bull named Landon. This commerce son weaned off his dam at 68% of her body weight. He ranks in the top 25% calving ease, 2% weaning weight, 3% yearling weight, 10% marbling, 2% FPI.

LOT 34

4032M Homo Blk Homo Polled
Reg# AMGV1601869 DOB: 1/25/2024 BA50

✓ BALDRIDGE ALTERNATIVE E125
DBRG PREFERENCE 2141K ET
DBRG MS TWISTER 8167F ET

BW: 92
Adj. WW: 672

✓ DMRG MR CAPTAIN 939G
DBRG MS CAPTAIN 2243K
DBRG MR YOGI 9278G

RF INDEX
164

GE-EPD	CED	BW	WW	YW	MK	CEM
Y	14.5	2.3	92	151	21	8
Rank %	35	95	3	2	75	30
HP	PG30	ST	CW	REA	MB	FPI
6.16	2.19	12.8	62	0.48	0.38	91.55
50	20	70	3	60	50	15

AOD: 2 Dam Wt:1392 %BWW: 48.28% Udder: 87 Doc: 1

Heavy muscled and deep bodied describe this bull whose granddam is a Dam of Merit and great granddam is a Dam of Distinction. This bull ranks in the top 35% calving ease, 3% weaning weight, 2% yearling weight, 3% carcass weight, 15% FPI.



LOT 35 • 4036M

LOT 37

4039M Homo Blk Homo Polled
Reg# AMGV1601876 DOB: 1/28/2024 PC25

✓ S S ODYSSEY H71
S S VOYAGE
S S MISS RITA 4P26 P810

BW: 78
Adj. WW: 677

✓ VRT LAZY TV ROCK G501
DBRG MS ROCK 2392K
DBRG MS LD CAPITALIST 0188H ET

RF INDEX
209

GE-EPD	CED	BW	WW	YW	MK	CEM
Y	16.5	-2.1	86	140	30	10
Rank %	15	15	10	5	4	10
HP	PG30	ST	CW	REA	MB	FPI
5.08	2.23	14.8	56	0.61	0.89	107.53
65	20	45	5	40	1	1

AOD: 2 Dam Wt:1181 %BWW: 57.32% Udder: 88 Doc: 2

The great granddam of this bull is a Dam of Distinction. This bull is thick made, sound structured, and flat good. He is a bigtime spread bull ranking in the top 15% calving ease, 15% birth weight, 10% weaning weight, 5% yearling weight, 5% carcass weight, 1% marbling, 1% FPI. RF Index at 209, make sure and call me when you sell these calves.

**LOT
38**

4047M Homo Blk Homo Polled
Reg# AMGV1604840 DOB: 2/1/2024 BA50

✓ HOFFMAN STAGECOACH 1908
STELLPFLUG HOFFMAN RISEABOVE
HOFFMAN 3210 RITA LADY 0256

BW: ET
Adj. WW: ET

✓ DBRG MR DESTINATION 931G
DBRG MS 931G 1073J ET
DBRG MS HILLEX102 584C ET

RF INDEX
165

GE-EPD	CED	BW	WW	YW	MK	CEM
Y	14.8	0.3	96	151	31	8
Rank %	25	70	1	2	3	30
HP	PG30	ST	CW	REA	MB	FPI
5.63	-0.28	13.2	71	0.44	0.26	93.61
50	70	70	1	65	75	10

AOD: 3 Dam Wt:ET %BWW: ET Udder: ET Doc: 1

Big framed, high performing, long bodied, and flat good describe this bull. This is some of the first Rise Above bulls to sell in any breed and the only ones registered in the Balancer breed. We purchased Rise Above semen for \$800 a straw to have the first sons offered in the industry. This bull ranks in the top 25% calving ease, 1% weaning weight, 2% yearling weight, 1% carcass weight, 10% FPI.

**LOT
39**

4051M Homo Blk Homo Polled
Reg# AMGV1604837 DOB: 2/2/2024 BA50

✓ HOFFMAN STAGECOACH 1908
STELLPFLUG HOFFMAN RISEABOVE
HOFFMAN 3210 RITA LADY 0256

BW: ET
Adj. WW: ET

✓ DCH MR MAYOR G443
DBRG MS MAYOR 2047K ET
DBRG MS TWISTER 8167F ET

RF INDEX
181

GE-EPD	CED	BW	WW	YW	MK	CEM
Y	14.6	-1.1	89	140	27	7
Rank %	25	35	5	10	20	45
HP	PG30	ST	CW	REA	MB	FPI
5.85	1.84	11.7	76	0.51	0.3	91.42
50	20	85	1	55	70	15

AOD: 2 Dam Wt:ET %BWW: ET Udder: ET Doc: 1

Big framed, heavy muscled, and high performing are my notes on this bull. This bull is the result of an IVF mating on what I thought was our top heifer in 2047K. Rise Above son with an RF index of 181. Top 25% calving ease, 5% weaning weight, 10% yearling weight, 1% carcass weight, 15% FPI.

**LOT
41**

4054M Homo Blk Homo Polled
Reg# AMGV1602216 DOB: 2/2/2024 BA50

✓ S S ODYSSEY H71
S S VOYAGE
S S MISS RITA 4P26 P810

BW: ET
Adj. WW: ET

✓ DCH MR MAYOR G443
DBRG MS MAYOR 1325J
DBRG MS FH GRANITE 7127E

RF INDEX
185

GE-EPD	CED	BW	WW	YW	MK	CEM
Y	16.2	0.3	91	146	30	9
Rank %	15	70	3	4	4	15
HP	PG30	ST	CW	REA	MB	FPI
5.78	2.85	13	61	0.33	0.62	99.77
50	5	70	3	85	10	3

AOD: 3 Dam Wt:ET %BWW: ET Udder: ET Doc: 1

ET calf out of Voyage that we are flat excited about as he is big framed, and long bodied. His granddam is a Dam of Merit. This bull has an RF index of 185. He ranks in the top 15% calving ease, 3% weaning weight, 4% yearling weight, 3% carcass weight, 10% marbling, 3% FPI.



RISE ABOVE
SIRE OF LOT 38-40 & 43-45

**LOT
40**

4053M Homo Blk Homo Polled
Reg# AMGV1604847 DOB: 2/2/2024 BA50

✓ HOFFMAN STAGECOACH 1908
STELLPFLUG HOFFMAN RISEABOVE
HOFFMAN 3210 RITA LADY 0256

BW: ET
Adj. WW: ET

✓ DBRG MR DESTINATION 931G
DBRG MS 931G 1073J ET
DBRG MS HILLEX102 584C ET

RF INDEX
169

GE-EPD	CED	BW	WW	YW	MK	CEM
Y	15.9	-0.5	98	156	31	9
Rank %	15	50	1	1	3	15
HP	PG30	ST	CW	REA	MB	FPI
5.63	-0.28	14.1	72	0.69	0.24	96.24
50	70	55	1	20	80	10

AOD: 3 Dam Wt:ET %BWW: ET Udder: ET Doc: 1

This bull was supposed to be pictured so please look up his video. He is very sound structured, deep bodied, and complete. Full brother to Lot 38. The granddam 584C is the mother of 710E. Top 15% calving ease, 1% weaning weight, 1% yearling weight, 1% carcass weight, 10% FPI. We still sell them by the pound everywhere I do business, and this bull will add pounds to anyone's calf crop.



LOT 41 • 4054M

LOT 42

4056M Homo Blk Homo Polled
Reg# AMGV1602205 DOB: 2/2/2024 BA38

✓ LAR MAN IN BLACK
JMB MAXINE TG 2131

BW: ET
Adj. WW: ET

✓ DBRG TWISTER 451B
DBRG MISS TWISTER 706E
DBRG MS WATCHMAN 5402C

RF INDEX
125

GE-EPD	CED	BW	WW	YW	MK	CEM
Y	14.8	-1.1	92	142	26	8
Rank %	25	35	3	10	25	30
HP	PG30	ST	CW	REA	MB	FPI
3.18	1.45	14.1	43	0.35	0.42	96.47
85	40	55	30	85	40	5

AOD: 7 Dam Wt:ET %BWW: ET Udder: ET Doc: 1

ET bull out of our donor 706E. The granddam 5402C is also a donor and is a Dam of Distinction and raised Lucky who we sold to Chimney Butte Ranch. This bull ranks in the top 25% calving ease, 3% weaning weight, 10% yearling weight, 5% FPI.

LOT 44

4071M Homo Blk Homo Polled
Reg# AMGV1608369 DOB: 2/6/2024 BA50

✓ STELLPFLUG HOFFMAN RISEABOVE
HOFFMAN 3210 RITA LADY 0256

BW: ET
Adj. WW: ET

✓ DBRG MS MAYOR G443
DBRG MS MAYOR 2047K ET
DBRG MS TWISTER 8167F ET

RF INDEX
174

GE-EPD	CED	BW	WW	YW	MK	CEM
Y	14.9	-1.1	88	140	27	7
Rank %	25	35	10	10	20	45
HP	PG30	ST	CW	REA	MB	FPI
5.85	1.84	17.8	62	0.53	0.44	95.09
50	20	10	3	50	35	10

AOD: 2 Dam Wt:ET %BWW: ET Udder: ET Doc: 1

This bull is sound structured and attractive. ET bull who goes back to our great donor 8167F. These Rise Above cattle are some of the freshest genetics in the beef industry. This bull ranks in the top 25% calving ease, 10% weaning weight, 10% yearling weight, 3% carcass weight, 10% FPI.

LOT 46

4116M Homo Blk Homo Polled
Reg# AMGV1601909 DOB: 2/10/2024 BA50

✓ DBRG KINGSTON 2010K
DBRG MS TWISTER 0118H ET

BW: 66
Adj. WW: 632

✓ DBRG MS WATCHMAN 6300D
DBRG MS KRUGERRRAND 0124X

RF INDEX
158

GE-EPD	CED	BW	WW	YW	MK	CEM
Y	16.3	-2.6	72	112	28	9
Rank %	15	15	55	55	15	15
HP	PG30	ST	CW	REA	MB	FPI
8.66	0.85	14.6	36	0.26	0.79	95.88
20	40	40	50	95	2	10

AOD: 8 Dam Wt:1434 %BWW: 44.07% Udder: 88 Doc: 1

Kingston is a bull Grund Beef Genetics purchased from us, and this is his first calf crop. These cattle are flat good and have a lot of gas. This bull's dam is a Dam of Merit and has a gorgeous udder for an 8-year-old cow. This is the kind of cattle to build a cowherd around. Heifer bull who ranks in the top 15% calving ease, 15% birth weight, 2% marbling 10% FPI.

LOT 43

4064M Homo Blk Homo Polled
Reg# AMGV1604850 DOB: 2/5/2024 BA50

✓ STELLPFLUG HOFFMAN RISEABOVE
HOFFMAN 3210 RITA LADY 0256

BW: ET
Adj. WW: ET

✓ DBRG MR DESTINATION 931G
DBRG MS 931G 1073J ET
DBRG MS HILLEX102 584C ET

RF INDEX
142

GE-EPD	CED	BW	WW	YW	MK	CEM
Y	16	-2.3	95	150	31	9
Rank %	15	15	2	3	3	15
HP	PG30	ST	CW	REA	MB	FPI
5.63	-0.28	13.1	52	0.47	0.35	99.56
50	70	70	10	60	55	3

AOD: 3 Dam Wt:ET %BWW: ET Udder: ET Doc: 1

Rise Above bull that is a bigtime spread bull. This bull along with his dam and granddam are directly out of our ET program. We have placed a big emphasis on taking our best cows and replicating their genetics. It has allowed us to make quick genetic improvements. This heifer bull ranks in the top 15% calving ease, 15% birth weight, 2% weaning weight, 3% yearling weight, 10% carcass weight, 3% FPI.

LOT 45

4079M Homo Blk Homo Polled
Reg# AMGV1604843 DOB: 2/7/2024 BA50

✓ STELLPFLUG HOFFMAN RISEABOVE
HOFFMAN 3210 RITA LADY 0256

BW: ET
Adj. WW: ET

✓ DBRG MR DESTINATION 931G
DBRG MS 931G 1073J ET
DBRG MS HILLEX102 584C ET

RF INDEX
158

GE-EPD	CED	BW	WW	YW	MK	CEM
Y	16.8	-3.1	86	137	31	10
Rank %	10	10	10	10	3	10
HP	PG30	ST	CW	REA	MB	FPI
5.63	-0.28	16.3	52	0.23	0.51	98.45
50	70	30	10	95	20	4

AOD: 3 Dam Wt:ET %BWW: ET Udder: ET Doc: 1.5

ET bull that is a full brother to Lot 43. Homo Black and Homo Polled. All these bulls have been tested for black and polled and are sire and dam verified. Look at the EPD profile this bull possesses. Top 10% calving ease, 10% birth weight, 10% weaning and yearling weight, 10% carcass weight, 20% marbling, 4% FPI.



KINGSTON
SIRE OF LOT 46

**LOT
47****4118M** Homo Blk Homo Polled
Reg# AMGV1601911 DOB: 2/10/2024 BA38✓ LAR MAN IN BLACK BW: 80
JMB MAXINE TG 2131 Adj. WW: 722✓ WFA FLYING H GRANITE 7Z
DBRG MS FH GRANITE 7362E RF INDEX
DBRG MS REDEMPTION 528C 164

GE-EPD	CED	BW	WW	YW	MK	CEM
Y	18.2	-3.1	82	132	27	11
Rank %	4	10	20	15	20	3
HP	PG30	ST	CW	REA	MB	FPI
5.92	0.54	12.7	52	0.43	0.54	97.24
50	40	70	10	70	20	5

AOD: 7 Dam Wt:1340 %BWW: 53.88% Udder: 78 Doc: 1

★ This Man in Black bull is out of a 7-year-old cow and weaned this stout, heavy muscled, and big bodied bull at 54% of her body weight. This is a bigtime spread bull who ranks in the top 4% calving ease, 10% birth weight, 20% weaning weight, 15% yearling weight, 10% carcass weight, 20% marbling, 5% FPI. Top end Balancer bull.

**MAN IN BLACK
SIRE OF LOT 47****LOT
48****4120M** Homo Blk Homo Polled
Reg# AMGV1601913 DOB: 2/10/2024 BA50✓ G A R SUNBEAM BW: 88
CONNEALY COMMERCE Adj. WW: 645
AVIRA OF CONANGA 814R✓ GHGF TRUMP TRAIN C521 RF INDEX
DBRG MS TRUMP TRAIN 8263F 169
DBRG MS EXCLUSIVE 5136C ET

GE-EPD	CED	BW	WW	YW	MK	CEM
Y	13.8	1.5	95	152	20	10
Rank %	35	90	2	2	80	10
HP	PG30	ST	CW	REA	MB	FPI
6.53	0.39	8.7	61	0.74	0.46	96
40	70	>95	3	15	30	10

AOD: 6 Dam Wt:1358 %BWW: 47.50% Udder: 88 Doc: 1

Commercial cattlemen love these Commerce cattle. They come easy, grow big, have marbling, and come from a great cow family at Connealy Angus. This homo black and homo polled herd bull ranks in the top 2% weaning weight and yearling weight, 3% carcass weight, 15% ribeye, 10% FPI.

**BASIN JEFFERSON
SIRE OF LOT 49****LOT
49****4121M** Het Blk Homo Polled
Reg# AMGV1601914 DOB: 2/10/2024 BA50✓ BASIN RAINMAKER 8584 BW: 79
BASIN JEFFERSON 1104 Adj. WW: 795
BASIN RITA 9150✓ PHG EMINENCE E02 RF INDEX
DBRG MS EMINENCE 0324H 164
DCH HILLE F123

GE-EPD	CED	BW	WW	YW	MK	CEM
Y	14.3	-0.3	88	142	25	11
Rank %	35	55	10	10	35	3
HP	PG30	ST	CW	REA	MB	FPI
7.33	2.17	16.4	53	0.22	0.6	97.48
40	20	30	10	95	10	4

AOD: 4 Dam Wt:1312 %BWW: 60.59% Udder: 88 Doc: 1

7 for 7 bull out of a different sire. Basin Jefferson adds muscle and pounds to his calves while standing on perfect feet and legs. This bull is deep, thick, attractive, and flat good. He weaned off his dam at 795 pounds and 61% of her body weight. He ranks in the top 10% for weaning and yearling weight, 10% carcass weight, 10% marbling, 4% FPI.

**LOT 49 • 4121M**

LOT 50

4127M Homo Blk Homo Polled
 Reg# AMGV1608370 DOB: 2/10/2024 BA50

✓ HOFFMAN STAGECOACH 1908
 STELLPFLUG HOFFMAN RISEABOVE
 HOFFMAN 3210 RITA LADY 0256

BW: ET
 Adj. WW: ET

✓ SKF DUNN'S DESTINATION 029E
 DBRG MS DESTINATION 0311H
 DBRG MS TWISTER 725E

RF INDEX
 166

GE-EPD	CED	BW	WW	YW	MK	CEM
Y	11.6	-1.1	96	154	30	6
Rank %	65	35	1	2	4	65
HP	PG30	ST	CW	REA	MB	FPI
6.56	-0.07	13.9	65	0.39	0.43	98.46
40	70	55	2	75	35	4

AOD: 4 Dam Wt:ET %BWW: ET Udder: ET Doc: 1

The dam of this bull is a Dam of Merit and a donor for our program. He is a full brother to Lot 51. We flushed 4 different cows to Rise Above. We think he is a difference maker. This bull ranks in the top 1% weaning weight, 2% yearling weight, 2% carcass weight, 4% FPI.



LOT 51 • 4134M

LOT 51

4134M Homo Blk Homo Polled
 Reg# AMGV1602208 DOB: 2/11/2024 BA50

✓ HOFFMAN STAGECOACH 1908
 STELLPFLUG HOFFMAN RISEABOVE
 HOFFMAN 3210 RITA LADY 0256

BW: ET
 Adj. WW: ET

✓ SKF DUNN'S DESTINATION 029E
 DBRG MS DESTINATION 0311H
 DBRG MS TWISTER 725E

RF INDEX
 171

GE-EPD	CED	BW	WW	YW	MK	CEM
Y	14.3	-2.4	86	134	30	8
Rank %	35	15	10	15	4	30
HP	PG30	ST	CW	REA	MB	FPI
6.56	-0.07	14.3	63	0.77	0.43	95.17
40	70	55	3	10	35	10

AOD: 4 Dam Wt:ET %BWW: ET Udder: ET Doc: 1

This bull sticks out when you go through the pen of bulls. He is very deep bodied, heavy muscled, and attractive. He is one of the elite bulls in this sale. His dam is a Dam of Merit. He boasts an RF index of 171. He ranks in the top 15% birth weight, 10% weaning weight, 15% yearling weight, 3% carcass weight, 10% ribeye, 10% FPI.

LOT 52

4158M Het Blk Homo Polled
 Reg# AMGV1604836 DOB: 2/13/2024 BA50

✓ HOFFMAN STAGECOACH 1908
 STELLPFLUG HOFFMAN RISEABOVE
 HOFFMAN 3210 RITA LADY 0256

BW: ET
 Adj. WW: ET

✓ DCH MR MAYOR G443
 DBRG MS MAYOR 2047K ET
 DBRG MS TWISTER 8167F ET

RF INDEX
 158

GE-EPD	CED	BW	WW	YW	MK	CEM
Y	16.3	-0.5	96	146	27	8
Rank %	15	50	1	4	20	30
HP	PG30	ST	CW	REA	MB	FPI
5.85	1.84	16.1	64	0.5	0.3	95.29
50	20	30	2	55	70	10

AOD: 2 Dam Wt:ET %BWW: ET Udder: ET Doc: 1

IVF embryo out of 2047K. When I buy feeder cattle & when Roode Feedyard sells fat cattle we weigh the cattle up. With corn at \$4.50 and fats at \$210, pounds pay. This bull will add pounds to everyone's calf crop. Top 1% weaning weight, 4% yearling weight, 2% carcass weight, 10% FPI.

LOT 53

4160M Homo Blk Homo Polled
 Reg# AMGV1601924 DOB: 2/13/2024 BA50

✓ GAR SUNBEAM
 CONNEALY COMMERCE
 AVIRA OF CONANGA 814R

BW: 70
 Adj. WW: 675

✓ DBRG TWISTER 451B
 DBRG MISS TWISTER 712E
 DBRG MS EXCLUSIVE 560C ET

RF INDEX
 161

GE-EPD	CED	BW	WW	YW	MK	CEM
Y	20.3	-2.1	89	148	26	14
Rank %	1	20	5	3	25	1
HP	PG30	ST	CW	REA	MB	FPI
6.5	1.59	15.1	60	0.86	0.32	95.97
50	20	40	4	4	65	10

AOD: 7 Dam Wt:1346 %BWW: 50.15% Udder: 48 Doc: 1



Phenotypically this bull is flat awesome. He is very deep bodied, attractive, sound structured, and flat good. Look at the EPD spread on this heifer bull. Top 1% calving ease, 20% birth weight, 5% weaning weight, 3% yearling weight, 4% carcass weight, 4% ribeye, 10% FPI.



LOT 53 • 4160M

LOT 54

4165M Homo Blk Homo Polled
Reg# AMGV1601926 DOB: 2/14/2024 BA50

SA V RAINFALL 6846
DBRG KINGSTON 2010K
DBRG MS TWISTER 0118H ET

BW: 94
Adj. WW: 735

BTBR BTBR NEVADA 1170Y
DBRG MS NEVADA 7190E
DBRG MS 863U 3297A

RF INDEX
160

GE-EPD	CED	BW	WW	YW	MK	CEM
Y	11.2	1.1	87	146	30	6
Rank %	80	85	10	4	4	65
HP	PG30	ST	CW	REA	MB	FPI
8.15	-2.57	11.1	54	0.58	0.47	93.01
30	>95	90	10	40	30	15

AOD: 7 Dam Wt:1344 %BWW: 54.69% Udder: 68 Doc: 1



LOT 54 • 4165M

This is one of the biggest framed, stoutest made, and deepest bodied bulls in this sale. Look at his video on DV Auction. Kingston cattle have a lot of gas and great phenotype. This homo black and homo polled bull ranks in the top 10% weaning weight, 4% yearling weight, 10% carcass weight, 15% FPI.

LOT 55

4171M Homo Blk Homo Polled
Reg# AMGV1601930 DOB: 2/14/2024 BA50

BAR R JET BLACK
LAR MAN IN BLACK
JMB MAXINE TG 2131

BW: 96
Adj. WW: 737

WFA FLYING H GRANITE 7Z
DBRG MS FH GRANITE 8318F
DBRG MS PRIDE 6411D

RF INDEX
213

GE-EPD	CED	BW	WW	YW	MK	CEM
Y	12.4	0.6	97	159	26	6
Rank %	65	75	1	1	25	65
HP	PG30	ST	CW	REA	MB	FPI
7.25	2.49	13.2	80	0.75	0.56	100.69
40	20	70	1	15	15	2

AOD: 6 Dam Wt:1113 %BWW: 66.22% Udder: 87 Doc: 1

Man in Black bull that weaned off his dam at 66% of her body weight at 6 years of age. The granddam 6411D is a Dam of Merit. Wowsa, this bull has an RF Index of 213. This bull ranks in the top 1% weaning weight, 1% yearling weight, 1% carcass weight, 15% marbling, 2% FPI.

LOT 56

4172M Het Blk Homo Polled
Reg# AMGV1601931 DOB: 2/14/2024 BA50

BALDRIDGE ALTERNATIVE E125
DBRG PREFERENCE 2141K ET
DBRG MS TWISTER 8167F ET

BW: 85
Adj. WW: 657

JEFFRIES GLADIATOR 24C
DBRG MS JEFFERIES 9106G ET
DBRG MS EXCLUSIVE 5129C ET

RF INDEX
160

GE-EPD	CED	BW	WW	YW	MK	CEM
Y	15.1	-0.7	84	137	17	10
Rank %	25	45	15	10	95	10
HP	PG30	ST	CW	REA	MB	FPI
7.23	3.46	12.2	48	0.58	0.63	96.22
40	5	85	20	40	10	10

AOD: 5 Dam Wt:1336 %BWW: 49.18% Udder: 78 Doc: 1

These Preference cattle excel from a birth to growth spread standpoint. This bull is no different. He traces back to a donor in 5129C. This bull ranks in the top 25% calving ease, 15% weaning weight, 10% yearling weight, 20% carcass weight, 10% marbling, 10% FPI.

LOT 57

4176M Homo Blk Homo Polled
Reg# AMGV1601933 DOB: 2/15/2024 BA50

CONNEALY EMERALD
TAU OZ 77K ET
TAU MS SAMMY 385A

BW: 82
Adj. WW: 658

KG JUSTIFIED 3023
DBRG MS KG JUSTIFIED 0075H
DBRG MS OUTLOOK 6418D

RF INDEX
157

GE-EPD	CED	BW	WW	YW	MK	CEM
Y	14.2	1.5	91	149	25	8
Rank %	35	90	3	3	35	30
HP	PG30	ST	CW	REA	MB	FPI
5.8	0.16	13	53	0.7	0.49	95.21
50	70	70	10	20	25	10

AOD: 4 Dam Wt:1406 %BWW: 46.80% Udder: 88 Doc: 1

These KG Justified females are making excellent cows. The great granddam is a Dam of Distinction. This bull is big framed, long bodied, deep bodied, and attractive. He ranks in the top 3% for both weaning and yearling weight, 10% carcass weight, 20% ribeye, 10% FPI.

LOT 58

4178M Homo Blk Homo Polled
Reg# AMGV1601935 DOB: 2/15/2024 BA50

BASIN RAINMAKER 8584
BASIN JEFFERSON 1104
BASIN RITA 9150

BW: 76
Adj. WW: 737

JKGF CHIEF JUSTICE C205
DBRG MS CHEIF JUSTICE 0219H
DBRG MS FH GRANITE 457B

RF INDEX
160

GE-EPD	CED	BW	WW	YW	MK	CEM
Y	11.9	0.2	87	136	26	9
Rank %	65	65	10	10	25	15
HP	PG30	ST	CW	REA	MB	FPI
6.52	0.62	16	41	0.32	0.78	100.36
40	40	30	35	85	2	2

AOD: 4 Dam Wt:1320 %BWW: 55.83% Udder: 87 Doc: 1

We used Basin Jefferson to add some more punch and pounds to our Balancers. This bull turned out to be a 7 for 7 bull and weaned off his dam at 56% of her body weight. This bull ranks in the top 10% for both weaning and yearling weight, 2% marbling, 2% FPI.

LOT 59

4179M Homo Blk Homo Polled
 Reg# AMGV1601936 DOB: 2/15/2024 BA50

✓ V A R K C F BENNETT SUMMATION
 CONCLUSION 0234 SANDPOINT BLACKBIRD 8809

BW: 75
 Adj. WW: 706

✓ DBRG LW HF PURE-PRIDE 564Z
 MS PRIDE 8264F
 DBRG MS WATCHMAN 5402C

RF INDEX
 175



GE-EPD	CED	BW	WW	YW	MK	CEM
Y	18.8	-2.1	85	128	29	10
Rank %	2	20	10	20	10	10
HP	PG30	ST	CW	REA	MB	FPI
7.31	3.52	19.7	55	0.81	0.56	98.54
40	2	2	10	10	15	3

AOD: 6 Dam Wt:1213 %BWW: 58.20% Udder: 88 Doc: 1

This Conclusion bull stems from a great cow family. 5402C is a Dam of Distinction and has put many great females into our herd. 7 for 7 bull with an RF index of 175. This bull weaned off his 6-year-old dam at 58% of her body weight and this bull had the opportunity to nurse a perfect udder. This is a top end heifer bull who ranks in the top 2% calving ease, 20% birth weight, 10% weaning weight, 20% yearling weight, 10% carcass weight, 10% ribeye, 15% marbling, 3% FPI.



LOT 59 • 4179M

LOT 60

4182M Homo Blk Homo Polled
 Reg# AMGV1601939 DOB: 2/15/2024 BA50

✓ V A R K C F BENNETT SUMMATION
 CONCLUSION 0234 SANDPOINT BLACKBIRD 8809

BW: 70
 Adj. WW: 700

✓ DBRG BBDM BOLTON PAY DAY 45C
 MS PAY DAY 20G
 DBRG MISS TWISTER 712E

RF INDEX
 150



GE-EPD	CED	BW	WW	YW	MK	CEM
Y	19.7	-3.6	90	149	25	9
Rank %	1	5	4	3	35	15
HP	PG30	ST	CW	REA	MB	FPI
7.07	2.88	15.8	52	0.94	0.38	99.67
40	5	30	10	2	50	3

AOD: 5 Dam Wt:1128 %BWW: 62.06% Udder: 67 Doc: 1

This is a deep bodied, and stout made beef bull. 7 for 7 bull that weaned off his 5-year-old dam at 62% of her body weight. Stop and look at the birth to weaning EPD spread on this bull. He ranks in the top 1% calving ease, 5% birth weight, 4% weaning weight, 3% yearling weight, 10% carcass weight, 2% ribeye, 3% FPI.



LOT 60 • 4182M

LOT 61

4184M Homo Blk Homo Polled
 Reg# AMGV1601941 DOB: 2/15/2024 BA50

✓ DBRG BALDRIDGE ALTERNATIVE E125
 PREFERENCE 2141K ET
 DBRG MS TWISTER 8167F ET

BW: 92
 Adj. WW: 688

✓ DBRG DBRG WCR 59
 MS WCR59 858F
 DBRG MS SULLIVAN 277Z ET

RF INDEX
 169

GE-EPD	CED	BW	WW	YW	MK	CEM
Y	16.5	-1.8	81	134	21	10
Rank %	15	25	20	15	75	10
HP	PG30	ST	CW	REA	MB	FPI
5.79	2.28	16.3	49	0.25	0.73	97.96
50	20	30	15	95	3	4

AOD: 6 Dam Wt:1281 %BWW: 53.71% Udder: 88 Doc: 1

This bull combines two of our top cow families in 6044 (Nevada's Dam) and Foxi Roxi. A lot of embryo transfer in this pedigree. This bull is very deep bodied, heavy muscled, and flat good. His 6-year-old dam with an ideal udder weaned this bull at 54% of her body weight. He ranks in the top 15% calving ease, 25% birth weight, 20% weaning weight, 15% yearling weight, 15% carcass weight, 3% marbling, 4% FPI.



LOT 61 • 4184M

LOT 62

4191M Het Blk Homo Polled
 Reg# AMGV1601945 DOB: 2/16/2024 BA25

✓ BASIN RAINMAKER 8584
 BASIN JEFFERSON 1104
 BASIN RITA 9150

BW: 77
 Adj. WW: 666

✓ DBRG WCR 59
 DBRG MS WCR59 0276H
 DBRG MS 863U 4141B

RF INDEX
 181

GE-EPD	CED	BW	WW	YW	MK	CEM
Y	15.8	-2.4	84	125	28	12
Rank %	15	15	15	25	15	1
HP	PG30	ST	CW	REA	MB	FPI
3.63	1.4	12.8	50	0.11	0.82	102.6
75	40	70	15	>95	2	2

AOD: 4 Dam Wt:1150 %BWW: 57.91% Udder: 88 Doc: 1

The dam of this bull is a Dam of Merit and the granddam is a Dam of Distinction. This cow family has flat worked, and this bull weaned off his dam at 58% of her body weight. This bull is the 81st highest FPI bull born in the balancer breed in the fall of 23 and spring of 24. This heifer bull ranks in the top 15% calving ease, 15% birth weight, 15% weaning weight, 25% yearling weight, 15% carcass weight, 2% marbling, 2% FPI.

**LOT 64**

4206M Homo Blk Homo Polled
 Reg# AMGV1601958 DOB: 2/18/2024 BA50

✓ BASIN RAINMAKER 8584
 BASIN JEFFERSON 1104
 BASIN RITA 9150

BW: 81
 Adj. WW: 701

✓ DBRG DCH MR MAYOR G443
 MS MAYOR 1466J
 DBRG MS GRANITE 6369D

RF INDEX
 151

GE-EPD	CED	BW	WW	YW	MK	CEM
Y	13.9	0	80	128	25	10
Rank %	35	60	25	20	35	10
HP	PG30	ST	CW	REA	MB	FPI
5.02	1.94	19.3	46	0.23	0.6	91.66
65	20	5	25	95	10	15

AOD: 3 Dam Wt:1282 %BWW: 54.68% Udder: 88 Doc: 1

Basin Jefferson bull that weaned off over 700 pounds and 55% of his dam's weight. These Mayor daughters are flat good and have great udders. This bull ranks in the top 25% weaning weight, 20% yearling weight, 10% marbling 15% FPI.

LOT 66

4228M Homo Blk Homo Polled
 Reg# AMGV1602065 DOB: 2/20/2024 BA38

✓ V A R K C F BENNETT SUMMATION
 CONCLUSION 0234
 SANDPOINT BLACKBIRD 8809

BW: 85
 Adj. WW: 681

✓ DBRG B A B R B A B R 3405A
 MR 3405A 5359C
 DBRG 207Z ET

RF INDEX
 192

GE-EPD	CED	BW	WW	YW	MK	CEM
Y	17	-0.7	94	152	22	7
Rank %	10	45	2	2	65	45
HP	PG30	ST	CW	REA	MB	FPI
6.03	2.44	16	63	0.65	0.65	103.3
50	20	30	3	25	10	1

AOD: 9 Dam Wt:1366 %BWW: 49.85% Udder: 88 Doc: 1

This bull is the 71st highest FPI bull born in the balancer breed in the fall of 23 and spring of 24. A 9-year-old cow weaned this bull, and I continue to preach you need a shot of Gelbvieh to add longevity to your cowherd. This bull has an RF Index of 192, and ranks in the top 10% calving ease, 2% for both weaning and yearling weight, 3% carcass weight, 10% marbling, 1% FPI.

LOT 63

4201M Homo Blk Homo Polled
 Reg# AMGV1604879 DOB: 2/17/2024 BA50

✓ S S S S ODYSSEY H71
 S S VOYAGE
 S S MISS RITA 4P26 P810

BW: 88
 Adj. WW: 713

✓ DBRG DBRG TWISTER 451B
 MS TWISTER 788E
 DBRG MS WATCHMAN 154Y

RF INDEX
 193

GE-EPD	CED	BW	WW	YW	MK	CEM
Y	10.2	0.3	101	166	29	6
Rank %	90	70	1	1	10	65
HP	PG30	ST	CW	REA	MB	FPI
4.08	1.08	13.4	66	0.6	0.69	106.34
75	40	70	2	35	5	1

AOD: 7 Dam Wt:1506 %BWW: 47.34% Udder: 78 Doc: 1

Voyage son with bigtime growth and carcass EPD's. He has an RF index of 193. Not many bulls have a weaning weight EPD over 100, some places don't have a yearling weight that high. This homo black and homo polled bull ranks in the top 1% for both weaning and yearling weight, 2% carcass weight, 5% marbling, 1% FPI.

LOT 65

4222M Het Blk Homo Polled
 Reg# AMGV1601973 DOB: 2/19/2024 BA25

✓ V A R K C F BENNETT SUMMATION
 CONCLUSION 0234
 SANDPOINT BLACKBIRD 8809

BW: 83
 Adj. WW: 699

✓ DBRG DLW ALUMNI 7513A ET
 MS ALUMNI 794E
 DBRG MS MISSION STATEMENT162Y

RF INDEX
 166

GE-EPD	CED	BW	WW	YW	MK	CEM
Y	15.9	0.1	96	160	24	7
Rank %	15	65	1	1	45	45
HP	PG30	ST	CW	REA	MB	FPI
5.08	2	13.8	52	0.49	0.61	103.17
65	20	55	10	55	10	1

AOD: 7 Dam Wt:1360 %BWW: 51.40% Udder: 88 Doc: 1

Big framed, high performing, heavy muscled, and complete describe this Conclusion son that is flat good. He is out of a Dam of Merit cow who has a great udder. This bull is the 73rd highest FPI bull born in the balancer breed in the fall of 23 and spring of 24. Keep the females and feed the steers. This bull ranks in the top 15% calving ease, 1% for both weaning and yearling weight, 10% carcass weight, 10% marbling, 1% FPI.



**KAYDEN WITH HER
 GRAND CHAMPION BUCKET CALF**

LOT 67

4235M Het Blk Homo Polled
Reg# AMGV1602071 DOB: 2/20/2024 BA50

✓ S S ODYSSEY H71
S S VOYAGE
S S MISS RITA 4P26 P810

BW: 74
Adj. WW: 711

✓ DBRG MR MAYOR G443
DBRG MS MAYOR 1047J ET
DDGR EMMA 92E ET

RF INDEX
203

GE-EPD	CED	BW	WW	YW	MK	CEM
Y	19.3	-0.6	92	146	31	12
Rank %	2	50	3	4	3	1
HP	PG30	ST	CW	REA	MB	FPI
5.82	2.99	14.1	72	0.74	0.54	101.02
50	5	55	1	15	20	2

AOD: 3 Dam Wt:1265 %BWW: 56.21% Udder: 88 Doc: 1

Sound structured, deep bodied, and very tame describe this Voyage bull who is a 7 for 7 bull. This is an elite herd bull who is over 200 on the RF Index. This cow goes back to the Mandy cow from Gustin's herd and weaned this bull at 56% of her body weight. This bull ranks in the top 2% calving ease, 3% weaning weight, 4% yearling weight, 1% carcass weight, 15% ribeye, 20% marbling, 2% FPI.



LOT 67 • 4235M

LOT 68

4245M Homo Blk Het Polled
Reg# AMGV1602079 DOB: 2/22/2024 BA50

✓ G A R SUNBEAM
CONNEALY COMMERCE
AVIRA OF CONANGA 814R

BW: 72
Adj. WW: 669

✓ DBRG MS TWISTER 451B
DBRG MS TWISTER 0123H ET
BTBR MS BLACK CROSS 6044

RF INDEX
170

GE-EPD	CED	BW	WW	YW	MK	CEM
Y	18	-2.5	87	136	29	13
Rank %	4	15	10	10	10	1
HP	PG30	ST	CW	REA	MB	FPI
3.98	-0.08	13.7	54	0.67	0.54	99.78
75	70	55	10	25	20	3

AOD: 4 Dam Wt:1227 %BWW: 54.52% Udder: 88 Doc: 1

Moderate framed bull that is very attractive, sound structured, and simply doesn't have a hole. If this bull was homo polled, he would be at the top of my list. He is out of a Dam of Merit cow that weaned this bull at 55% of her body weight while displaying a great udder. This heifer bull ranks in the top 4% calving ease, 15% birth weight, 10% for both weaning and yearling weight, 10% carcass weight, 20% marbling 3% FPI.

LOT 69

4248M Het Blk Homo Polled
Reg# AMGV1602082 DOB: 2/22/2024 BA50

✓ BAR R JET BLACK
LAR MAN IN BLACK
JMB MAXINE TG 2131

BW: 78
Adj. WW: 708

✓ DBRG MR MAYOR G443
DBRG MS MAYOR 1174J ET
DDGR EMMA 92E ET

RF INDEX
190

GE-EPD	CED	BW	WW	YW	MK	CEM
Y	14.7	-1.8	83	133	27	9
Rank %	25	25	15	15	20	15
HP	PG30	ST	CW	REA	MB	FPI
5.13	2.61	14.6	65	0.71	0.58	96.17
65	5	40	2	15	15	10

AOD: 3 Dam Wt:1234 %BWW: 57.37% Udder: 88 Doc: 1

Deep bodied, sound structured, and complete describe this Man in Black son. The dam of this bull is a full sibling to the dam of Lot 67. Buy them both. 7 for 7 bull with an RF index of 190. He ranks in the top 25% calving ease, 25% birth weight, 15% for both weaning and yearling weight, 2% carcass weight, 15% ribeye, 15% marbling, 10% FPI. Ideal EPD profile.

LOT 70

4249M Homo Blk Homo Polled
Reg# AMGV1602083 DOB: 2/22/2024 BA50

✓ BASIN RAINMAKER 8584
BASIN JEFFERSON 1104
BASIN RITA 9150

BW: 75
Adj. WW: 658

✓ DBRG MR TWISTER 7195E ET
DBRG MS 7195E 1106J
DBRG MS PRIDE 6411D

RF INDEX
148

GE-EPD	CED	BW	WW	YW	MK	CEM
Y	16.2	-2	75	126	26	11
Rank %	15	20	40	25	25	3
HP	PG30	ST	CW	REA	MB	FPI
6.31	1.4	20.5	43	0.62	0.53	91.41
50	40	2	30	30	20	15

AOD: 3 Dam Wt:1242 %BWW: 52.98% Udder: 88 Doc: 1

Deep bodied and sound structured bull whose granddam is a Dam of Merit. This heifer bull weaned off his dam at 53% of her body weight. He ranks in the top 15% calving ease, 20% birth weight, 25% yearling weight, 20% marbling, 15% FPI. Homo Black, Homo Polled, and Homo Good.

LOT 71

4251M Homo Blk Homo Polled
Reg# AMGV1602084 DOB: 2/23/2024 BA50

✓ G A R SUNBEAM
CONNEALY COMMERCE
AVIRA OF CONANGA 814R

BW: 83
Adj. WW: 689

✓ DBRG MR ALUMNI 5288C
DLW ALUMNI 7513A ET
VRT LAZY TV MS PASSION Z521

RF INDEX
151

GE-EPD	CED	BW	WW	YW	MK	CEM
Y	15.8	-0.4	92	140	22	11
Rank %	15	50	3	10	65	3
HP	PG30	ST	CW	REA	MB	FPI
6.04	1.56	15.2	49	0.73	0.5	97.56
50	20	40	15	15	25	4

AOD: 9 Dam Wt:1392 %BWW: 49.50% Udder: 78 Doc: 1

The longevity in these Gelbvieh cattle is second to none. This 9-year-old cow weaned this bull at 49% of her body weight. These Commerce cattle will be popular this sale season. Top 15% calving ease, 3% weaning weight, 10% yearling weight, 15% carcass weight, 15% ribeye, 4% FPI.

LOT 72**4253M** Homo Blk Homo Polled
Reg# AMGV1602086 DOB: 2/23/2024 BA50✓ DBRG BALDRIDGE ALTERNATIVE E125 BW: 77
PREFERENCE 2141K ET Adj. WW: 655
DBRG MS TWISTER 8167F ET✓ DBRG K C F BENNETT EXPONENTIAL RF INDEX
MS EXPONENTIAL 1086J ET 166
DBRG MS EXCLUSIVE 560C ET

GE-EPD	CED	BW	WW	YW	MK	CEM
Y	16.7	-1.9	84	141	22	9
Rank %	10	20	15	10	65	15
HP	PG30	ST	CW	REA	MB	FPI
7.17	2.91	16.4	57	0.52	0.45	94.33
40	5	30	10	50	35	10

AOD: 3 Dam Wt:1445 %BWW: 45.33% Udder: 88 Doc: 1

Deep bodied, heavy muscled, sound structured, and flat good describe this heifer bull out of Preference. Commercial customers are going to salivate over the birth to growth spread on these Preference calves. This bull goes back to our donor 560C. This bull ranks in the top 10% calving ease, 20% birth weight, 15% weaning weight, 10% yearling weight, 10% carcass weight, 10% FPI.

**LOT 72 • 4253M****LOT 73****4256M** Homo Blk Homo Polled
Reg# AMGV1602117 DOB: 2/23/2024 BA50✓ DBRG BALDRIDGE ALTERNATIVE E125 BW: 78
PREFERENCE 2141K ET Adj. WW: 648
DBRG MS TWISTER 8167F ET✓ DBRG TEHAMA PATRIARCH F028 RF INDEX
MS PATRIARCH 1282J 142
DBRG MR BLK IMPACT 2100Z ET

GE-EPD	CED	BW	WW	YW	MK	CEM
Y	16.7	-2	86	144	20	9
Rank %	10	20	10	5	80	15
HP	PG30	ST	CW	REA	MB	FPI
6.32	1.74	18.6	60	0.96	0.16	88.84
50	20	5	4	2	95	25

AOD: 3 Dam Wt:1195 %BWW: 54.23% Udder: 88 Doc: 1

Moderately framed bull that is very complete in his phenotype package. This bull goes back to the great 2100Z cow, who was the dam of Twister. Patriarch females are known for their great udders. This heifer bull ranks in the top 10% calving ease, 20% birth weight, 10% weaning weight, 5% yearling weight, 4% carcass weight, 2% ribeye, 25% FPI.

LOT 74**4258M** Homo Blk Homo Polled
Reg# AMGV1602119 DOB: 2/24/2024 BA25✓ S S ODYSSEY H71 BW: 82
S S VOYAGE Adj. WW: 711
S S MISS RITA 4P26 P810✓ DBRG BTBR BTBR NEVADA 1170Y RF INDEX
MS NEVADA 7214E ET 222
DBRG MS CONSENSUS 398A ET

GE-EPD	CED	BW	WW	YW	MK	CEM
Y	15.1	-1.5	90	132	32	9
Rank %	25	30	4	15	2	15
HP	PG30	ST	CW	REA	MB	FPI
4.58	0.05	13.2	69	0.6	0.84	106.03
65	70	70	1	35	1	1

AOD: 7 Dam Wt:1231 %BWW: 57.76% Udder: 88 Doc: 1

This bull is the 27th highest FPI bull born in the balancer breed in the fall of 23 and spring of 24. The dam of this bull is the dam of 9159G, who just sold for 28k at the National Western Stock Show. She weaned this bull at 7 years old at 58% of her body weight and has a gorgeous udder. Look at this bull's RF Index, 222. This bull ranks in the top 25% calving ease, 4% weaning weight, 15% yearling weight, 1% carcass weight, 1% marbling, 1% FPI.

LOT 75**4260M** Homo Blk Homo Polled
Reg# AMGV1602121 DOB: 2/24/2024 BA50✓ TAU CONNEALY EMERALD BW: 75
OZ 77K ET Adj. WW: 701
TAU MS SAMMY 385A✓ DBRG POSS RAWHIDE RF INDEX
MS RAWHIDE 2075K ET 162
DBRG MS TWISTER 8167F ET

GE-EPD	CED	BW	WW	YW	MK	CEM
Y	12.8	-1.5	76	120	24	7
Rank %	50	30	35	35	45	45
HP	PG30	ST	CW	REA	MB	FPI
5.05	1.82	14	51	0.71	0.54	90.55
65	20	55	15	15	20	20

AOD: 2 Dam Wt:1149 %BWW: 61.01% Udder: 88 Doc: 1

7 for 7 bull whose dam is a full sibling to Preference. She had a gorgeous udder and weaned this bull 701 pounds, and 61% of her body weight. This bull is very sound structured and ranks in the top 15% carcass weight, 15% ribeye, 20% marbling, 20% FPI.

LOT 76**4285M** Homo Blk Homo Polled
Reg# AMGV1604853 DOB: 3/3/2024 BA50✓ ERTL BTBR BTBR SAGUARO 8111F ET BW: 69
269K MR SAGUARO 026 Adj. WW: 652
ERTL 026H MISS FX JUSTINE BY B467✓ DBRG DBRG RIPTIDE 710E 930G RF INDEX
MS RIPTIDE 2238K 151
DBRG MS 532C 750E

GE-EPD	CED	BW	WW	YW	MK	CEM
Y	14.4	0.4	77	124	24	8
Rank %	35	70	35	30	45	30
HP	PG30	ST	CW	REA	MB	FPI
9.81	1.21	14.1	32	0.24	0.82	95.9
15	40	55	65	95	2	10

AOD: 2 Dam Wt:1332 %BWW: 48.95% Udder: 88 Doc: 1

Moderate framed, deep bodied, thick made describe this herd bull. The granddam is a Dam of Merit. We purchased this sire from Ertel Cattle Company and used him to clean up our heifers. This bull ranks in the top 35% calving ease, 30% yearling weight, 2% marbling, 10% FPI.

LOT 774296M Homo Blk Homo Polled
Reg# AMGV1602220 DOB: 3/7/2024 BA50DEER VALLEY GROWTH FUND
B A R DYNAMIC
B A R BLACKCAP 7235-B0048BW: ET
Adj. WW: ETDBRG TWISTER 451B
DBRG MS TWISTER 8167F ET
DBRG MS EXCLUSIVE 560C ETRF INDEX
148

GE-EPD	CED	BW	WW	YW	MK	CEM
Y	18.4	-4.5	91	149	25	11
Rank %	4	2	3	3	35	3
HP	PG30	ST	CW	REA	MB	FPI
9.58	1.55	11.3	44	0.78	0.5	104.54
15	20	90	25	10	25	1

AOD: 6 Dam Wt:ET %BWW: ET Udder: ET Doc: 1

We put in some late embryos, so the quality of our bull lineup runs very deep. This bull is out of the great donor 8167F and Dynamic. This bull is the 61st highest FPI bull born in the balancer breed in the fall of 23 and spring of 24. This heifer bull ranks in the top 4% calving ease, 2% birth weight, 3% weaning weight, 3% yearling weight, 10% ribeye, 25% marbling, 1% FPI.

LOT 784305M Homo Blk Homo Polled
Reg# AMGV1602219 DOB: 3/9/2024 BA50DEER VALLEY GROWTH FUND
B A R DYNAMIC
B A R BLACKCAP 7235-B0048BW: ET
Adj. WW: ETDBRG TWISTER 451B
DBRG MS TWISTER 8167F ET
DBRG MS EXCLUSIVE 560C ETRF INDEX
164

GE-EPD	CED	BW	WW	YW	MK	CEM
Y	19.6	-3.7	85	133	25	11
Rank %	1	5	10	15	35	3
HP	PG30	ST	CW	REA	MB	FPI
9.58	1.55	11.5	42	0.43	0.71	104.26
15	20	85	35	70	4	1

AOD: 6 Dam Wt:ET %BWW: ET Udder: ET Doc: 1

Full brother to Lot 77. This bull is the 69th highest FPI bull born in the balancer breed in the fall of 23 and spring of 24. This homo black and homo polled heifer bull is deep bodied. He is ready for a set of heifers, yet; has enough growth to throw on a set of cows. This bull ranks in the top 1% calving ease, 5% birth weight, 10% weaning weight, 15% yearling weight, 4% marbling, 1% FPI.

DONOR 8167F

This cow is one of our very top young donors. She traces back to the dam of Nevada and is out of our donor 560C. She is out of an outcross sire in Twister and there is no semen in the country left on him. Not only do we feel she is a special cow, but our customers do also. We have sold 22 bulls in the past 3 years for a gross of \$210,250 with an average of \$9,557. She is paid for, and her sons will be as profitable for you as she was for Rippe Gelbvieh. She has several sons in this year's sale. Buy with confidence.

**DYNAMIC
SIRE OF LOT 77****LOT 79**4309M Homo Blk Homo Polled
Reg# AMGV1602224 DOB: 3/10/2024 BA50BAR R JET BLACK
LAR MAN IN BLACK
JMB MAXINE TG 2131BW: ET
Adj. WW: ETDBRG TWISTER 451B
DBRG MS TWISTER 8167F ET
DBRG MS EXCLUSIVE 560C ETRF INDEX
156

GE-EPD	CED	BW	WW	YW	MK	CEM
Y	15.3	-2.7	85	134	24	8
Rank %	25	15	10	15	45	30
HP	PG30	ST	CW	REA	MB	FPI
5.35	1.48	13.8	45	0.47	0.62	99.37
65	40	55	25	60	10	3

AOD: 6 Dam Wt:ET %BWW: ET Udder: ET Doc: 1

ET bull out of 8167F combined with Man In Black. You can see 8167F's picture and information below. She is very fertile and one of the very best purebred cows in the breed. This bull ranks in the top 25% calving ease, 15% birth weight, 10% weaning weight, 15% yearling weight, 25% carcass weight, 10% marbling, 3% FPI.

**MS TWISTER 8167F
DAM OF LOTS 77, 78 & 79**

**LOT
80****4312M** Homo Blk Homo Polled
Reg# AMGV1602218 DOB: 3/11/2024 BA50✓ B A R DYNAMIC
B A R BLACKCAP 7235-B0048BW: ET
Adj. WW: ET✓ DBRG MS TWISTER 451B
DBRG MS TWISTER 8167F ET
DBRG MS EXCLUSIVE 560C ETRF INDEX
137

GE-EPD	CED	BW	WW	YW	MK	CEM
Y	17.5	-3.9	90	150	25	10
Rank %	4	4	4	3	35	10
HP	PG30	ST	CW	REA	MB	FPI
9.58	1.55	13.4	39	0.3	0.57	103.63
15	20	70	40	90	15	1

AOD: 6 Dam Wt:ET %BWW: ET Udder: ET Doc: 1

H

This bull is the 83rd highest FPI bull born in the balancer breed in the fall of 23 and spring of 24. This bull is deep bodied, sound structured, and flat good. Just look at the birth to growth EPD spread in this bull. He ranks in the top 4% for calving ease, birth weight, weaning weight, 3% yearling weight, 15% marbling, 1% FPI. Just incredible EPD spread.

**WILLOW ON 4-WHEELER.****LOT
81****4313M** Homo Blk Homo Polled
Reg# AMGV1602225 DOB: 3/11/2024 BA50✓ G A R SUNBEAM
CONNEALY COMMERCE
AVIRA OF CONANGA 814RBW: ET
Adj. WW: ET✓ DBRG MS TWISTER 451B
DBRG MS TWISTER 8167F ET
DBRG MS EXCLUSIVE 560C ETRF INDEX
143

GE-EPD	CED	BW	WW	YW	MK	CEM
Y	17.5	0.1	96	158	25	12
Rank %	4	65	1	1	35	1
HP	PG30	ST	CW	REA	MB	FPI
6.63	1.57	12.8	53	0.98	0.29	96.55
40	20	70	10	2	70	5

AOD: 6 Dam Wt:ET %BWW: ET Udder: ET Doc: 1

H

Another late ET bull out of 8167F. I wrote down this bull is a sleeper and think he will be flat good by the time sale day hits. He is sound structured and very attractive. This is a performance bull that ranks in the top 4% calving ease, top 1% for both weaning and yearling weight, 10% carcass weight, 2% ribeye, 5% FPI.

**LOT
82****4316M** Homo Blk Homo Polled
Reg# AMGV1604859 DOB: 3/12/2024 BA50✓ BALDRIDGE ALTERNATIVE E125
DBRG MR BLACKSMITH 2148K
DBRG MS TWISTER 8167F ETBW: 69
Adj. WW: 689✓ DBRG MS ASHLAND 1057J ET
DBRG MISS TWISTER 706ERF INDEX
136

GE-EPD	CED	BW	WW	YW	MK	CEM
Y	17.6	-3.1	84	135	22	10
Rank %	4	10	15	15	65	10
HP	PG30	ST	CW	REA	MB	FPI
5.08	2.82	20.9	40	0.43	0.49	96.89
65	5	1	40	70	25	5

AOD: 3 Dam Wt:1307 %BWW: 52.72% Udder: 77 Doc: 1

H

Deep bodied, heavy muscled and complete describe this bull who is out of a full brother to Preference. His great granddam is a Dam of Distinction. This heifer bull ranks in the top 4% calving ease, 10% birth weight, 15% for both weaning and yearling weight, 25% marbling, 5% FPI.

**LOT
83****4318M** Homo Blk Homo Polled
Reg# AMGV1602144 DOB: 3/13/2024 BA50✓ CONNEALY EMERALD
TAU OZ 77K ET
TAU MS SAMMY 385ABW: 67
Adj. WW: 669✓ K C F BENNETT EXPONENTIAL
DBRG MS EXPONENTIAL 1332J ET
DBRG MS TWISTER 8167F ETRF INDEX
129

GE-EPD	CED	BW	WW	YW	MK	CEM
Y	18.3	-3.6	71	105	25	9
Rank %	4	5	60	70	35	15
HP	PG30	ST	CW	REA	MB	FPI
5.86	1.84	19.5	34	0.82	0.45	89.39
50	20	2	60	10	35	20

AOD: 3 Dam Wt:1340 %BWW: 49.93% Udder: 88 Doc: 1

H

Sleep all night heifer bull. Deep bodied bull who goes back to the great donor 8167F. Use this bull on your heifers and you won't have to miss a basketball game. Top 4% calving ease, 5% birth weight, 10% ribeye, 20% FPI.

**LOT 82 • 4316M**

LOT 84**4321M** Homo Blk Homo Polled
Reg# AMGV1604860 DOB: 3/14/2024 BA50✓ S S ODYSSEY H71
S S VOYAGE
S S MISS RITA 4P26 P810BW: 80
Adj. WW: 713✓ DBRG MS GRANITE 6369D
DBRG MS OUTLOOK 4230B**RF INDEX**
165

GE-EPD	CED	BW	WW	YW	MK	CEM
Y	18.1	-2.9	73	113	26	10
Rank %	4	10	50	55	25	10
HP	PG30	ST	CW	REA	MB	FPI
6.1	1.54	18.2	47	0.24	0.63	93.16
50	20	10	20	95	10	15

AOD: 8 Dam Wt:1396 %BWW: 51.07% Udder: 78 Doc: 1

Dam good bull deep in the sale. This 8-year-old cow weaned this bull at 51% of her body weight. This heifer bull ranks in the top 4% calving ease, 10% birth weight, 20% carcass weight, 10% marbling, 15% FPI. 165 for RF Index.

LOT 86**4346M** Homo Blk Homo Polled
Reg# AMGV1604869 DOB: 3/29/2024 BA50✓ S S ODYSSEY H71
S S VOYAGE
S S MISS RITA 4P26 P810BW: 84
Adj. WW: 752✓ DBRG MS EXCLUSIVE 5179C ET
BTBR MS BLACK CROSS 6044**RF INDEX**
174

GE-EPD	CED	BW	WW	YW	MK	CEM
Y	16.6	-1.2	86	137	28	10
Rank %	10	35	10	10	15	10
HP	PG30	ST	CW	REA	MB	FPI
6.96	2.11	14.1	46	0.44	0.76	102.66
40	20	55	25	65	3	2

AOD: 9 Dam Wt:1306 %BWW: 57.58% Udder: 78 Doc: 1

This bull is the 99th highest FPI bull born in the entire balancer breed in the fall of 23 and spring of 24. This bull goes back to the great 6044 cow who is the mother of Nevada. She weaned this attractive bull at 58% of her body weight at 9 years of age. Look at the EPD profile and a 174 RF Index. He ranks in the top 10% calving ease, 10% weaning weight, 10% yearling weight, 25% carcass weight, 3% marbling, 2% FPI.

LOT 87**4362M** Homo Blk Homo Polled
Reg# AMGV1604872 DOB: 4/2/2024 BA50✓ S S ODYSSEY H71
S S VOYAGE
S S MISS RITA 4P26 P810BW: 74
Adj. WW: 685✓ DBRG MS PRIDE 6361D
DBRG MS WATCHMAN 279Z ET**RF INDEX**
147

GE-EPD	CED	BW	WW	YW	MK	CEM
Y	17.5	-1.7	81	126	31	8
Rank %	4	25	20	25	3	30
HP	PG30	ST	CW	REA	MB	FPI
5.05	1.67	13	42	0.56	0.54	95.37
65	20	70	35	40	20	10

AOD: 8 Dam Wt:1197 %BWW: 57.23% Udder: 88 Doc: 1

This bull's dam weaned this bull at 57% of her body weight at 8 years of age. Every commercial herd needs a shot of Gelbvieh for fertility. This heifer bull ranks in the top 4% calving ease, 25% birth weight, 20% weaning weight, 25% yearling weight, 20% marbling, 10% FPI.

LOT 85**4331M** Homo Blk Homo Polled
Reg# AMGV1604863 DOB: 3/18/2024 BA50✓ S S ODYSSEY H71
S S VOYAGE
S S MISS RITA 4P26 P810BW: 87
Adj. WW: 667✓ DBRG MS TWISTER 451B
DBRG MS TWISTER 8167F ET
DBRG MS EXCLUSIVE 560C ET**RF INDEX**
169

GE-EPD	CED	BW	WW	YW	MK	CEM
Y	14.7	-2.1	86	135	28	8
Rank %	25	20	10	15	15	30
HP	PG30	ST	CW	REA	MB	FPI
6.03	1.87	13.2	43	0.52	0.78	103.73
50	20	70	30	50	2	1

AOD: 6 Dam Wt: %BWW: Udder: 77 Doc: 1

This bull is the 68th highest FPI bull born in the balancer breed in the fall of 23 and spring of 24. The quality runs deep on this pen of balancer bulls. This is 8167F natural calf and he is sound structured and attractive. He ranks in the top 25% calving ease, 20% birth weight, 10% weaning weight, 15% yearling weight, 2% marbling, 1% FPI. 169 RF Index.

**VOYAGE**
SIRE OF LOTS 84, 85, 86 & 87**LOT 88****4367M** Homo Blk Homo Polled
Reg# AMGV1602173 DOB: 4/5/2024 BA50✓ K C F BENNETT ROCK E
VRT LAZY TV ROCK G501
VRT LAZY TV MS COLLEGIAN E422BW: 83
Adj. WW: 723✓ DBRG MS PAYWEIGHT 1682
DBRG MS PAYWEIGHT 722E
DBRG MS HILLE X102 566C ET**RF INDEX**
154

GE-EPD	CED	BW	WW	YW	MK	CEM
Y	16.3	-3.2	71	118	32	9
Rank %	15	10	60	40	2	15
HP	PG30	ST	CW	REA	MB	FPI
8.47	2.2	11.9	38	-0.03	0.75	95.46
30	20	85	45	>95	3	10

AOD: 7 Dam Wt:1466 %BWW: 49.32% Udder: 77 Doc: 1

If you like sound structured, deep bodied, and very tame bulls, take a hard look at this bull. This bull weaned off his 7-year-old dam at 723 pounds. Heifer bull that ranks in the top 15% calving ease, 10% birth weight, 3% marbling, 10% FPI.

BLACK PUREBRED

We have made a strong effort to increase both the number and quality of our purebreds. Last year we sold several bulls to seedstock breeders, and we're thrilled with the success people are having with our genetics. Our ET program is very evident when you look through these bulls, with 81% of the offering either an ET calf or the Dam being an ET in the last two maternal generations. The average percentile rank is top 45% Calving Ease, 10% Weaning Weight, 5% Marbling, 3% Feeder Profit Index. Out of the top 100 Purebred bulls for Feeder Profit Index born in the fall of 23 and the spring of 24, Rippe Gelbvieh has 9 of them. Ranking #2 in the breed. We have an elite set of Purebred Gelbvieh bulls ready for your program.

LOT 89

3562L Homo Blk Homo Polled
Reg# AMGV1585840 DOB: 8/26/2023 PB94.5

✓ TMGC SB FORMULA 12E
✓ TMGC SB DCN REVOLUTION 287G
TMGC 213X

BW: ET
Adj. WW: ET

✓ DBRG MR BLK IMPACT 3960N
✓ DBRG MR BLK IMPACT 2100Z ET
DBRG FOXI ROXI 8N

RF INDEX
113

GE-EPD	CED	BW	WW	YW	MK	CEM
Y	11.9	1.2	76	115	17	4
Rank %	60	80	25	25	95	90
HP	PG30	ST	CW	REA	MB	FPI
8.17	-0.45	16.3	28	0.77	0.48	85.13
45	65	45	50	30	5	15

AOD: 11 Dam Wt:ET %BWW: ET Udder: ET Doc: 1

This is one of our last calves out of the great donor and Dam of Distinction cow in 2100Z. She had a near perfect udder and was the Dam of the 0247H who sired Bold Ruler that sold for 50k last year. This bull ranks in the top 25% for both weaning and yearling weight, 30% ribeye, 5% marbling, 15% FPI.



LOT 89 • 3562L

LOT 90

3558L Homo Blk Homo Polled
Reg# AMGV1585836 DOB: 8/23/2023 PB94.5

✓ TMGC SB FORMULA 12E
✓ TMGC SB DCN REVOLUTION 287G
TMGC 213X

BW: ET
Adj. WW: ET

✓ DBRG MR BLK IMPACT 3960N
✓ DBRG MR BLK IMPACT 2100Z ET
DBRG FOXI ROXI 8N

RF INDEX
125

GE-EPD	CED	BW	WW	YW	MK	CEM
Y	11.9	1.1	76	120	17	4
Rank %	60	75	25	15	95	90
HP	PG30	ST	CW	REA	MB	FPI
8.17	-0.45	13.9	37	0.72	0.44	83.89
45	65	70	20	40	10	20

AOD: 11 Dam Wt:ET %BWW: ET Udder: ET Doc: 1

Full brother to Lot 89. We found this sire after he sold in a Seedstock Plus bull sale and he mated perfectly with 2100Z. Top 25% weaning weight, 15% yearling weight, 20% carcass weight, 10% marbling, 20% FPI.

LOT 91

3606L Homo Blk Homo Polled
Reg# AMGV1585827 DOB: 9/20/2023 PB87.5

✓ DCH MR EMINENCE E02
✓ DCH MR MAYOR G443
DCH HILLE D561

BW: 82
Adj. WW: 704

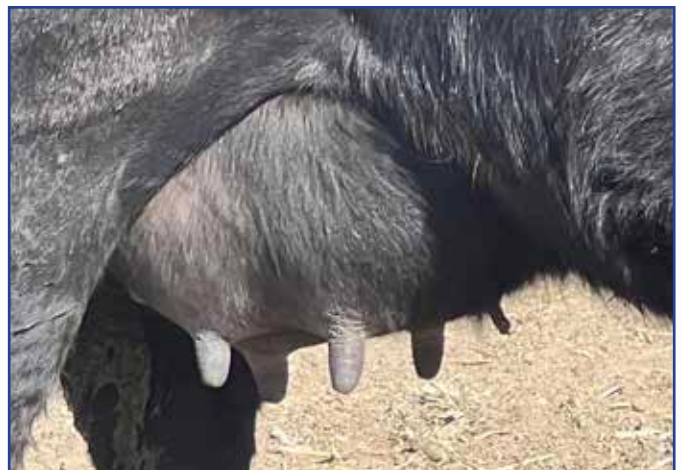
✓ DBRG MR DESTINATION 029E
✓ DBRG MR DESTINATION 0544H
DBRG MS NEVADA 6546D ET

RF INDEX
124

GE-EPD	CED	BW	WW	YW	MK	CEM
Y	14.8	0.1	80	135	32	8
Rank %	20	50	15	3	1	20
HP	PG30	ST	CW	REA	MB	FPI
6.4	1.53	16.7	41	0.08	0.41	88.99
70	20	30	10	>95	10	5

AOD: 3 Dam Wt:1436 %BWW: 49.03% Udder: 88 Doc: 2

The granddam of this bull is a Dam of Merit. She weaned this bull off at 704 pounds and we didn't weigh these until after the blizzards of last January. Great udder on this dam. This bull ranks in the top 20% calving ease, 15% weaning weight, 3% yearling weight, 10% carcass weight, 10% marbling, 5% FPI.



**UDDER OF 9159G
& DAM OF BOLD RULER
JOEL SCORED THIS AN 8/8**

**LOT
92****4090M** Homo Blk Homo Polled
Reg# AMGV1604892 DOB: 2/8/2024 PB87.5✓ DLW TPG FRONTRUNNER 2510F BW: ET
JKGF ALL AMERICAN J109 Adj. WW: ET
JKGF F109 ET✓ BTBR BTBR NEVADA 1170Y **RF INDEX**
DBRG MS NEVADA 7455E 70
DBRG MR BLK IMPACT 2100Z ET

GE-EPD	CED	BW	WW	YW	MK	CEM
Y	13.9	-0.8	81	130	22	7
Rank %	30	30	15	5	60	35
HP	PG30	ST	CW	REA	MB	FPI
9.96	-0.5	16.1	10	0.33	0.48	91.03
25	65	45	>95	>95	5	3

AOD: 7 Dam Wt:ET %BWW: ET Udder: ET Doc: 1

This bull is the 96th highest FPI bull born in the entire Gelbvieh breed in the fall of 23 and spring of 24. The granddam, 2100Z is a Dam of Distinction. We had a pile of ET brothers from this mating and just kept the best 2. This bull is moderate framed, deep bodied, and sound structured. He ranks in the top 30% calving ease and birth weight, 15% weaning weight, 5% yearling weight, 5% marbling, 3% FPI.

**LOT
93****4098M** Homo Blk Homo Polled
Reg# AMGV1604889 DOB: 2/8/2024 PB87.5✓ DLW TPG FRONTRUNNER 2510F BW: ET
JKGF ALL AMERICAN J109 Adj. WW: ET
JKGF F109 ET✓ BTBR BTBR NEVADA 1170Y **RF INDEX**
DBRG MS NEVADA 7455E 101
DBRG MR BLK IMPACT 2100Z ET

GE-EPD	CED	BW	WW	YW	MK	CEM
Y	11.2	-0.7	78	122	22	5
Rank %	75	30	20	15	60	75
HP	PG30	ST	CW	REA	MB	FPI
9.96	-0.5	13.1	24	0.6	0.49	89
25	65	85	65	65	5	5

AOD: 7 Dam Wt:ET %BWW: ET Udder: ET Doc: 1

Full brother to Lot 92. This is a moderate framed bull that is very deep bodied, attractive, and he sports a large package between his back legs. This bull stems from one of the more famous cow families in our herd with 2100Z being a dam of Distinction. Top 30% birth weight, 20% weaning weight, 15% yearling weight, 5% marbling, 5% FPI.

**LOT
94****4104M** Homo Blk Homo Polled
Reg# AMGV1602200 DOB: 2/9/2024 PB88.3✓ LRSF JOB DANELL PAY PAL 12H BW: ET
LRSF VOYAGEUR K182 Adj. WW: ET
LRSF RYLEE F71 ET✓ DBRG TWISTER 451B **RF INDEX**
DBRG MS TWISTER 8167F ET 116
DBRG MS EXCLUSIVE 560C ET

GE-EPD	CED	BW	WW	YW	MK	CEM
Y	11.8	0.4	82	130	27	7
Rank %	60	60	10	5	15	35
HP	PG30	ST	CW	REA	MB	FPI
11.09	3.88	15.7	33	0.8	0.39	89
15	2	45	30	25	15	5

AOD: 6 Dam Wt:ET %BWW: ET Udder: ET Doc: 1

This bull might be the biggest framed, stoutest made, heaviest muscled bull in the entire offering. He is out of the famous 8167F cow. We were contending bidder his sire Voyager 2 years ago and I knew this would be the perfect mating. Bigtime purebred bull here with an outcross pedigree. He ranks in the top 10% weaning weight, 5% yearling weight, 25% ribeye, 15% marbling, 5% FPI.

**ALL AMERICAN
SIRE OF LOTS 92 & 93****VOYAGEUR
SIRE OF LOT 94****LOT 94 • 4104M**

LOT 95

4128M Homo Blk Homo Polled
 Reg# AMGV1601916 DOB: 2/10/2024 PB99.9

✓ SKF DUNN'S EFFERVESCENT 042E BW: 66
 ✓ SKF DUNN'S CLEVER BUSINESS 054K ET Adj. WW: 811
 SKF DUNN'S MISS ELIZA JANE 7E30

✓ DBRG MR FRANCHISE 0247H RF INDEX
 ✓ DBRG MS FRANCHISE 0247H 2089K ET 102
 DBRG MISS TWISTER 706E

GE-EPD	CED	BW	WW	YW	MK	CEM
Y	15.1	-1.8	78	122	30	8
Rank %	20	15	20	15	3	20
HP	PG30	ST	CW	REA	MB	FPI
8.26	2.17	13.4	27	0.59	0.45	91.46
45	20	85	55	70	10	2

AOD: 2 Dam Wt:1118 %BWW: 72.54% Udder: 88 Doc: 1



This bull is the 76th highest FPI bull born in the entire Gelbvieh breed in the fall of 23 and spring of 24. His great granddam is a Dam of Distinction and still active in our herd. This bull started at 66 pounds and weaned off his dam at 811 pounds and 73% of her body weight. This heifer bull is an elite Gelbvieh bull. Top 20% calving ease, 15% birth weight, 20% weaning weight, 15% yearling weight, 10% marbling, 2% FPI.



LOT 95 • 4128M

LOT 96

4117M Het Blk Homo Polled
 Reg# AMGV1601910 DOB: 2/10/2024 PC81.3

✓ DLW TPG FRONTRUNNER 2510F BW: 81
 ✓ JKGF ALL AMERICAN J109 Adj. WW: 691
 JKGF F109 ET

✓ VRT LAZY TV WATCHMAN W021 RF INDEX
 ✓ DBRG MS WATCHMAN 448B ET 162
 JCB N313

GE-EPD	CED	BW	WW	YW	MK	CEM
Y	13.6	0.2	84	132	21	7
Rank %	35	65	10	10	70	45
HP	PG30	ST	CW	REA	MB	FPI
11.43	1.13	13.4	39	0.99	0.72	98.3
10	40	75	30	2	3	3

AOD: 10 Dam Wt:1541 %BWW: 44.84% Udder: 77 Doc: 1

Longevity is the #1 most economical trait for commercial cattlemen. Gelbvieh excel in it and this bull is out of a 10-year-old cow. In addition, he possesses the highest RF Index of any Gelbvieh bull in this catalog. This bull is sound structured and very deep bodied. He ranks in the top 10% for both weaning and yearling weight, 30% carcass weight, 2% ribeye, 3% marbling, 3% FPI. Call me when you sell these feeders.

LOT 97

4143M Homo Blk Homo Polled
 Reg# AMGV1601921 DOB: 2/11/2024 PB93.8

✓ SKF DUNN'S EFFERVESCENT 042E BW: 72
 ✓ SKF DUNN'S CLEVER BUSINESS 054K ET Adj. WW: 733
 SKF DUNN'S MISS ELIZA JANE 7E30

✓ DBRG MR FRANCHISE 0247H RF INDEX
 ✓ DBRG MS FRANCHISE 0247H 2270K 116
 DBRG MS WATCHMAN 154Y

GE-EPD	CED	BW	WW	YW	MK	CEM
Y	13.5	1.2	81	127	26	7
Rank %	30	80	15	10	25	35
HP	PG30	ST	CW	REA	MB	FPI
9.28	2.04	14.6	40	0.41	0.4	86.62
35	20	60	10	95	15	10

AOD: 2 Dam Wt:1155 %BWW: 63.46% Udder: 88 Doc: 1

7 for 7 bull that was born in the 70's and weaned off in the 700's and weaned off his dam at 63% of her body weight while nursing a great udder. Granddam is a Dam of Distinction. This bull ranks in the top 30% calving ease, 15% weaning weight, 10% yearling weight, 10% carcass weight, 15% marbling, 10% FPI.

LOT 98

4166M Homo Blk Homo Polled
 Reg# AMGV1601927 DOB: 2/14/2024 PB93.8

✓ DLW TPG FRONTRUNNER 2510F BW: 73
 ✓ JKGF ALL AMERICAN J109 Adj. WW: 687
 JKGF F109 ET

✓ LWHF PURE-PRIDE 564Z RF INDEX
 ✓ DBRG MS PRIDE 9296G 125
 DBRG MS WATCHMAN 154Y

GE-EPD	CED	BW	WW	YW	MK	CEM
Y	15.8	-1.2	74	118	25	8
Rank %	10	25	35	20	35	20
HP	PG30	ST	CW	REA	MB	FPI
10.36	2.52	18.2	27	0.72	0.59	91.31
25	10	20	55	40	2	3

AOD: 5 Dam Wt:1444 %BWW: 47.58% Udder: 88 Doc: 1



Granddam is a Dam of Distinction. This bull is the 79th highest FPI AND the 41st for Marbling bull born in the entire Gelbvieh breed in the fall of 23 and spring of 24. If data and numbers drive your business take a long hard look at this bull. Heifer bull that ranks in the top 10% calving ease, 25% birth weight, 20% yearling weight, 2% marbling, 3% FPI.



KAYDEN LOVES PLAYING SOFTBALL.

LOT 99

4167M Het Blk Homo Polled
 Reg# AMGV1602214 DOB: 2/14/2024 PB94.5

✓ TMGC SB Formula 12E
 ✓ TMGC SB DCN Revolution 287G
 TMGC 213X

BW: ET
 Adj. WW: ET

✓ DBRG MS MAYOR G443
 ✓ DBRG MS MAYOR 1091J ET
 DDGR EMMA 92E ET

RF INDEX
 137

GE-EPD	CED	BW	WW	YW	MK	CEM
Y	14.3	-1	77	116	19	8
Rank %	30	25	25	25	85	20
HP	PG30	ST	CW	REA	MB	FPI
10.58	3.54	18.8	39	0.85	0.48	88.82
15	2	10	15	15	5	5

AOD: 3 Dam Wt:ET %BWW: ET Udder: ET Doc: 1

This big framed bull is very sound structured, deep bodied, and heavy muscled. Phenotypically he is as good of a Purebred bull in this catalog. He has the 3rd highest RF Index of any Purebred bull in this sale. His dam 1091 is as gorgeous of a purebred cow as we have. He ranks in the top 30% calving ease, 25% birth weight, 25% for both weaning and yearling weight, 15 carcass weight, 15% ribeye, 5% marbling, 5% FPI. This bull checks a lot of boxes.



LOT 99 • 4167M

LOT 100

4188M Het Blk Homo Polled
 Reg# AMGV1602211 DOB: 2/15/2024 PB94.5

✓ TMGC SB Formula 12E
 ✓ TMGC SB DCN Revolution 287G
 TMGC 213X

BW: ET
 Adj. WW: ET

✓ DBRG MS MAYOR G443
 ✓ DBRG MS MAYOR 1091J ET
 DDGR EMMA 92E ET

RF INDEX
 147

GE-EPD	CED	BW	WW	YW	MK	CEM
Y	11.9	0.3	88	134	19	7
Rank %	60	55	3	3	85	35
HP	PG30	ST	CW	REA	MB	FPI
10.58	3.54	14.1	53	0.94	0.37	90.49
15	2	70	1	10	15	3

AOD: 3 Dam Wt:ET %BWW: ET Udder: ET Doc: 1

Full brother to lot 99. This is the more moderately framed brother, and he is also big bodied, has a big scrotal, and is attractive. He has the 2nd highest RF Index of any Purebred in this sale. He ranks in the top 3% for both weaning and yearling weight, 1% carcass weight, 10% ribeye, 15% marbling, 3% FPI.



MR BOLD RULER 3194L. SOLD FOR 50K LAST YEAR. LOOK FOR HIS GENETICS FROM J&K GELBIEH, BAR SS RANCH, COLES BEND, LARSON'S LOST RIVER, COVINGTON GELBIEH & RIPPE GELBIEH.

LOT 101

4233M Homo Blk Homo Polled
 Reg# AMGV1602069 DOB: 2/20/2024 PB93.4

✓ GRU DBRG TWISTER 451B
 ✓ GRU GRAND PLAN 744G
 GRU MS ELAINE 744E

BW: 92
 Adj. WW: 758

✓ SKF DUNN'S DESTINATION 029E
 ✓ DBRG MS DESTINATION 967G ET
 DBRG MS EXCLUSIVE 576C ET

RF INDEX
 105

GE-EPD	CED	BW	WW	YW	MK	CEM
Y	12.2	-0.2	72	115	29	6
Rank %	60	45	45	25	10	55
HP	PG30	ST	CW	REA	MB	FPI
9.19	0.45	14.6	36	0.57	0.25	79.76
35	65	60	20	70	40	35

AOD: 5 Dam Wt:1386 %BWW: 54.69% Udder: 88 Doc: 1

I don't typically keep a Purebred bull with his EPD profile, but this bull was simply too good. He is sound structured and has as much rib and capacity as any bull in this sale. He weaned off his Dam of Merit dam at 758 pounds and 55% of her body weight. In addition, his granddam is a Dam of Distinction. Look at this bull's video if raising flat good cattle is your jam.



LOT 101 • 4233M

LOT 102

4243M Homo Blk Homo Polled
Reg# AMGV1602077 DOB: 2/21/2024 PB93.4

DBRG TWISTER 451B BW: 95
GRU GRAND PLAN 744G Adj. WW: 746
GRU MS ELAINE 744E

SKF DUNN'S DESTINATION 029E RF INDEX
DBRG MS DESTINATION 0155H ET 106
DBRG MS EXCLUSIVE 576C ET

GE-EPD	CED	BW	WW	YW	MK	CEM
Y	11.1	1.8	91	145	28	6
Rank %	75	90	2	1	10	55
HP	PG30	ST	CW	REA	MB	FPI
8.78	0.35	17	35	0.45	0.37	91.27
35	65	30	25	90	15	3

AOD: 4 Dam Wt:1257 %BWW: 59.35% Udder: 78 Doc: 1

Big framed performance bull that is long bodied and heavy muscled. This bull has as much gas as any bull in this sale. He weaned off his dam at 746 pounds and 59% of her body weight. His granddam is a Dam of Distinction. Did I mention that this bull is the 63rd highest FPI bull born in the entire Gelbvieh breed in the fall of 23 and spring of 24? He ranks in the top 2% weaning weight, 1% yearling weight, 25% carcass weight, 15% marbling, 3% FPI.



**GRAND PLAN
SIRE OF LOT 102**

LOT 103

4277M Homo Blk Homo Polled
Reg# AMGV1602134 DOB: 3/1/2024 PB88.3

JOB DANELL PAY PAL 12H BW: 88
LRSF VOYAGEUR K182 Adj. WW: 757
LRSF RYLEE F71 ET

SKF DUNN'S DESTINATION 029E RF INDEX
DBRG MS DESTINATION 0311H 127
DBRG MS TWISTER 725E

GE-EPD	CED	BW	WW	YW	MK	CEM
Y	9.3	2.1	91	147	32	6
Rank %	95	95	2	1	1	55
HP	PG30	ST	CW	REA	MB	FPI
10.83	2.5	16.7	39	0.71	0.5	94.73
15	20	30	15	40	4	1

AOD: 4 Dam Wt:1278 %BWW: 59.23% Udder: 88 Doc: 1

This bull is the 17th highest FPI bull born in the entire Gelbvieh breed in the fall of 23 and spring of 24. His Dam is a Dam of Merit and a donor for us. She has a gorgeous udder with a lot of milk and weaned this bull at 757 pounds and 59% of her body weight. That is efficient. He is deep bodied, attractive, and heavy muscled. This bull ranks in the top 2% weaning weight, 1% yearling weight, 15% carcass weight, 4% marbling and 1% FPI.



WILLOW AND STRATTON WITH DANDY.

LOT 104

4292M Het Blk Homo Polled
Reg# AMGV1604855 DOB: 3/5/2024 PB99.9

SKF DUNN'S EFFERVESCENT 042E BW: 78
SKF DUNN'S CLEVER BUSINESS 054K ET Adj. WW: 711
SKF DUNN'S MISS ELIZA JANE 7E30

DBRG MR DESPERADO 0085H RF INDEX
DBRG MS DESPERADO 2181K 114
DBRG MS BOO BOO 077X ET

GE-EPD	CED	BW	WW	YW	MK	CEM
Y	15.4	-1.1	78	126	21	8
Rank %	20	25	20	10	70	20
HP	PG30	ST	CW	REA	MB	FPI
10.12	2.3	18.8	28	0.55	0.51	90.9
25	20	10	50	75	4	3

AOD: 2 Dam Wt:1185 %BWW: 60.00% Udder: 99 Doc: 1

This bull is the 73rd highest FPI bull born in the entire Gelbvieh breed in the fall of 23 and spring of 24. 4292M is flat good, super sound, attractive, and complete. 7 for 7 bull. He weaned off his dam at 711 pounds and 60% of her body weight while nursing a perfect udder. This heifer bull ranks in the top 20% calving ease, 25% birth weight, 20% weaning weight, 10% yearling weight, 4% marbling, 3% FPI. Don't fall asleep on this bull because he was born later.



LOT 104 • 4292M

2025



RISE ABOVE

Sons Sell!

Cattle Fax
presentation with
Troy Applehans
March 7th, 2025
7:00 PM

RIPPE ANGUS

27TH Annual Bull Sale

117 Angus, Gelbvieh & Balancer® Bulls

SATURDAY, MARCH 8 • 1:00 P.M.

Complimentary Lunch • 12:00

SALE LOCATION: Fairbury Livestock Company
Fairbury, NE

Greetings Cattlemen & Cattlewomen:

With a lot of excitement and intensity, we are starting Rippe Angus. This is just our first set of Angus bulls we are offering, but it is far from our first rodeo. We understand how to raise high quality seedstock and what the commercial industry is after. We knew if we ever added a new breed, that we would go procure a few of the very top cows in the breed and build a herd around them via Embryo Transfer.

We stuck to the plan and have visited over 50 Angus operations in the past 3 years. We spent countless hours on the phone learning. Currently, we have purchased 6 donors that stem from the following herds: Tehama Angus - California, Vermilion Angus - Montana, Boyd Beef Cattle - Kentucky, Sitz Angus - Montana, 7 Oaks Angus - Iowa. Jake Tiedeman with Baldrige-Tiedeman Angus has partnered with us on some of the cows and has been very instrumental in assisting us with finding the right programs and genetics.

What sets Rippe Angus apart from other seedstock operations is how tied our family is to the cattle business. My dad, Duane, manages the cow calf and farming operation. I, Dustin own and operate Roode Feedyard in Fairbury, NE. We buy a lot of customers calves each year and feed out all our own cattle each year. This allows us to collect carcass data back on the cattle along with knowing where our genetics need tweaked. I want to emphasize this is not a side business for us, we both make our living in the cattle industry and are passionate about its future.

Joel Cast is very instrumental in this operation. We couldn't manage this herd or collect all the data we do without him. Many operations preach maternal. How can they preach maternal without taking cow weights and looking at cow efficiency. Joels takes pride in taking udder scores on every cow that calves. We are part of Maternal Plus and hope it leads to more accurate data on longevity and fertility in the future.

We are very aggressive when it comes to ET and AI, while also still believing a good herd bull can leave you with an outcross set of females. Every animal we have gets genomic enhanced EPD's along with parent verification. We ultrasound our bulls and females and collect large amounts of carcass data.

It is our hope that the information we track and present to you is valuable. We won't buy a bull without the information we provide. We will be posting additional information on a supplement sheet prior to the sale on our website and Facebook. Please call ahead of the sale and we can go over your program and your program's needs.

Duane & Dustin Rippe

Contact Information:

For information regarding the bulls contact Dustin.

Dustin & Karla Rippe

C - 316-323-4874

C- 402-200-0555

Email: dustin@rgcattle.com

Duane & Brenda Rippe

6775 Road D - Hubbell, NE 68375

C - 402-200-0096

Joel Cast

C - 402-641-1705

9th year at Rippe Gelbvieh

Sale Manager:

Chris Mitchell

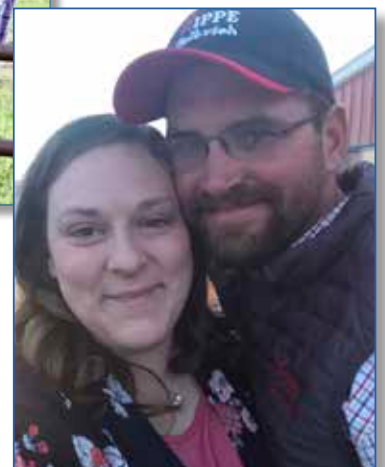
MIMS

Mitchell Marketing Services

20180 NE Roy Golden Rd - Blountstown, FL 32424



Dustin, Karla, Brenda & Duane



Joel & Amanda Cast

Chris Mitchell
334-695-1371
mchrismitchell@aol.com
www.mms.bz

General Information – Terms & Conditions

Sale Location:

Fairbury Livestock Company, 1312 Sale Barn Road,
Fairbury, NE 68352. On the southeast corner of Fairbury.

Lodging:

A Block of Rooms has been reserved at the Edgewood Hotel & Suites in Fairbury, NE for \$110 plus tax. To make reservations, call 402-587-5082. Ask for the Rippe Gelbvieh rate.

Auctioneer:

Kyle Elwood, Salina, KS 785-493-2901

Ringmen:

Andee Marston, Kansas Stockman785-250-4449

Troy Applehans, Cattle Fax303-886-0775

Matt Printz, Kansas Stockman308-440-2918

Commercial Marketing Agents:

Zach Johnson - Wyoming & Montana.....307-575-2171

Supplement Sheet:

The supplement sheet will be available on sale day and on our website about 3 days prior to the bull sale. It will contain Yearling Weights, Ultrasound information, Scrotal measurements. Any information on the supplement sheet or announced on sale day will take precedence over the catalog

Health:

All bulls will be ready for interstate shipment. They will be BVD tested and had their Lepto shot. In addition, they will have passed a breeding soundness exam along with being poured with an Ivermectin type of product before delivery.

Sale Day Phones:

Sale Barn – Larry Junker 402-300-1141

Dustin Rippe 316-323-4874

Dustin Rippe 402-200-0555

Duane Rippe..... 402-200-0096

Joel Cast 402-641-1705

Karla Rippe..... 402-366-1943

Chris Mitchell 334-695-1371

Ty Nelson..... 402-822-0276

Website: www.ripppeangus.com

SCHEDULE OF EVENTS:

March 2nd 2025

Bulls & Brats 1:00 to 5:00 PM. Come Evaluate the bulls in person prior to the sale, at the ranch.

March 7th 2025

Cattle Fax Presentation 7:00 PM. Come Listen to Troy Applehans give us an update on Agricultural markets.
Meal Provided @ Sale Barn

March 8th 2025

9:00 AM - 12:30 PM - View the bulls at the Fairbury Sale Barn
12:00 PM - Lunch Provided with homemade Pie
1:00 PM - Sale Starts

Terms and Conditions:

Cash on sale day. All cattle will sell under the recommended terms of the AAA. If you would like to be offered credit, please call Duane prior to sale day. We will be retaining 50% semen and certificate interest on every bull in the catalog unless otherwise noted.

Guarantee:

The cattle are guaranteed to be fertile and reproductively sound. All bulls selling come with a first-year breeding-season guarantee against injury or infertility issues. "Breeding season" is defined by the time of turnout to 60 days later. **All bulls will have passed a semen evaluation before being delivered.** If any fertility problems happen during the first breeding season, a replacement bull will be available until the purchased bull's long-term fertility can be determined. If a bull sustains a breeding injury during the first breeding season, a credit on a future bull purchase will be given. If a bull sustains an injury or fertility issue, we ask that it is evaluated and treated immediately by a veterinarian and a report is provided by the veterinarian doing the evaluation. If the vet determines the bull is no longer a fertile and mobile breeder, the following formula will be used to determine credit issued on a future purchase: purchase price – salvage value - \$2,500 (if injury related) = credit.

Volume Discount:

If you purchase five or more bulls in one year, you will receive 5% off the price of each bull.

Sight Unseen Purchases:

If you can't attend the sale and you want to buy call Dustin Rippe about your different purchasing options. We handle several customers bull purchases each year. If the bulls don't meet your approval when we unload them, you don't own them.

Delivery & Trucking:

Free delivery within 300 miles of Hubbell, NE. For all bulls further than 300 miles, we will make every effort to accommodate the buyer. Delivery will not exceed \$300/bull to a central location. Any bull taken on sale day, we will deduct \$100 from the bill.

Transfers:

Registration papers will be transferred upon request.

Liability:

Neither the sale host, sale facility, sale management, nor the auctioneer assumes any liability for any accidents that may occur.

Genetic Information:

All lots have had a HD 50K test, and the EPD's listed reflect the 50k enhancement. The test verifies parentage and increases predictability. All animals are tested free of any known genetic defect.

ET Bulls:

The ET bulls are raised by a surrogate mother. Therefore, the bulls actual birth weight and weaning weight are not a representation of the bulls genetics. Consequently, we have chosen not to provide this information as it is inaccurate. EPDs do a much better job of showing the genetic value of these bulls.

Rippe Angus Bull Sale:

Black Balancer Bulls..... Lots 1–88
 Black Purebred Bulls..... Lots 89–104
 Angus Bulls Lots 200–213

Roode Feedyard (RF) Index

I sat down this summer and decided to build my own terminal index. It would compare very closely with Gelbvieh's Feeder Profit Index and Angus \$Beef Index. The major difference is how much real world data is the RF Index. I utilized all the carcass data from Roode Feedyard for the past 5 years and the performance data. In addition, all the cowherd data we have collected. We also used our own negotiated grid that we have with JBS. It is as good of an index for a commercial producer in the midwest that feeds out their cattle as there is in the industry. Please feel free to call Dustin to go over any information in this index. We will be putting more emphasis on this index than FPI and \$B in the future.

Most Widely Used Angus Bulls in 2024

Name	RF Index
Connealy Craftsman.....	161
GB Fireball 672.....	345
Deer Valley Growth Fund	160
Sitz Resilient 10208.....	134
Tehama Tahoe B767.....	167
LAR Man In Black.....	228
DB Iconic G95	249
Sitz Stellar 726D.....	100
Poss Rawhide.....	202
GAR Home Town.....	286

Maternal Weaned Calf Value (\$M), an index, expressed in dollars per head, predicts profitability differences from conception to weaning with the underlying breeding objective assuming that individuals retain their own replacement females within herd and sell the rest of the cull female and all male progeny as feeder calves. The model assumes commercial producers will replace 25% of their breeding females in the first generation and 20% of their breeding females in each subsequent generation.

Weaned Calf Value (\$W), an index, expressed in dollars per head, to predict profitability differences in progeny due to genetics from birth to weaning. The underlying objective being producers will retain 20% of the female progeny as replacements and sell the rest of the cull females and their male counterparts as feeder calves.

Beef Value (\$B), a terminal index, expressed in dollars per carcass, to predict profitability differences in progeny due to genetics for postweaning and carcass traits. This terminal index assumes commercial producers wean all male and female progeny, retain ownership of these animals through the feedlot phase and market these animals on a carcass grid.

Combined Value (\$C), an index, expressed in dollars per head, which includes all traits that make up both Maternal Weaned Calf Value (\$M) and Beef Value (\$B) with the objective that commercial producers will replace 20% of their breeding females per year with replacement heifers retained within their own herd. The remaining cull heifer and steer progeny are then assumed to be sent to the feedlot where the producers retain ownership of those cattle and sell them on a quality-based carcass merit grid.

About the Catalog:

LOT #	NAME		DOB:		RF INDEX	
	Reg#				\$M	\$W
	BW:	Adj. WW:				
SIRE	GRAND SIRE					
	GRAND DAM					
DAM	MATERNAL GRAND SIRE				\$B	\$C
	MATERNAL GRAND DAM					
	CED	BW	WW	YW	MK	SC
	HP	CW	REA	MB	CLAW	ANGLE
	Dam Wt:	%BWW:	Udder:	Doc:		



Cow Data
 AOD = Age of Dam
 Dam Wt = Cow weight 6 weeks after weaning
 %BWW = Percent the dam weaned of her body weight
 DOC = Docility

EPDs
 Expected progeny differences. Winter 2024 evaluation provided by the AGA

Heifer Bulls



If you see a bull with an Rippe Gelbvieh believes it is a heifer bull.

Udder:

The first number is suspension and second references teat size. 9 is ideal. It represents very small teat size and very tight udder suspension. 1 represents very large, ballooned shape teat and a very pendulous suspension.

Doc = Docility:

1 - The bull is content standing alone. 2- The bull is nervous when standing in a pen alone. 3 - The bull is looking for a hole in the fence when alone. 4 - The bull is looking to chase you out of the pen.

CAB - Certified Angus Beef:



The logo can be used on any registered Angus bull with a minimum marbling EPD (Marb) of +0.65 and an Angus Grid Value Index (\$G) of +55 or higher.

Why these numbers? Sire-identified carcass data from more than 8,600 records in the American Angus Association database show these minimum thresholds for Marb and \$G achieve an average of 50% CAB acceptance.



WILLOW WITH HER BUCKET CALF FROM THE FEEDYARD.

ANGUS

This is our first major offering of Angus bulls. We are getting in the Angus breed rather quickly through Embryo Transfer. We have acquired several top Donor cows in the breed. This year's lineup is a combination of calves out of our own Donor's and embryo's we have purchased. We have placed a very strong emphasis on foot quality in our Angus breeding program, and it shows with the bulls being offered. Our ET program is very evident when you look through these bulls, with 93% of the offering either an ET calf or the Dam being an ET in the last two maternal generations. The average percentile rank is top 45% Calving Ease, 10% Weaning Weight, 25% \$B, 20% \$C. Lots 200 through 204 are Age Advantage bulls, that are ready for a big set of cows.



BARRICADE SIRE OF LOT 200

**LOT
200**

RIPPE BARRICADE 3534L

Reg# 20755385 DOB: 08/17/23

BW: ET Adj. WW: ET

RF INDEX

159

SITZ STELLAR 726D
SITZ BARRICADE 632F
SITZ BARBARAMERE NELL 765D
SITZ RLS SUBSTANTIAL 10186
SITZ SHAUNA 418
SITZ SHAUNA 1506

\$M	\$W
47	58
90	60
\$B	\$C
177	277
25	35

CED	BW	WW	YW	MK	SC	CEM
-1	4.2	89	157	14	1.1	1
95	95	5	5	95	35	95
HP	CW	MB	REA	CLAW	ANGLE	HS
12.9	79	0.69	0.59	0.3	0.48	0.44
45	10	55	65	2	55	40

Dam Wt:ET %BWW: ET Udder: ET Doc: 1

When you are searching for heavy muscled and stout made bulls that will make an excellent set of females look right here. This bull is a result of an embryo purchase from Cody Sankey and the entire mating comes right from the Sitz herd in Montana. This bull ranks in the top 5% for weaning weight, 2% claw, 10% for \$ Feedlot.

**LOT
202**

RIPPE MAVERICK 3551L

Reg# 20755364 DOB: 08/21/23

BW: ET Adj. WW: ET

RF INDEX

179

BASIN PAYWEIGHT 1682
POSS MAVERICK
POSS PRIDE 5163
SITZ UPWARD 307R
BALDCO EMULOTA 5835
JMB EMULOTA 013

\$M	\$W
60	82
65	10
\$B	\$C
159	266
40	45

CED	BW	WW	YW	MK	SC	CEM
9	0.1	69	118	38	0.39	6
30	25	45	50	2	85	70
HP	CW	MB	REA	CLAW	ANGLE	HS
6	49	0.85	0.64	0.49	0.45	0.98
95	65	40	55	50	40	95

Dam Wt:ET %BWW: ET Udder: ET Doc: 1

This bull comes from an embryo purchased from Baldrige-Tiedeman Angus. This is a more moderate framed bull that is very sound structured and attractive. This is a Maverick son out of a great donor of the Baldrige-Tiedeman program. This bull is balanced in his EPD profile, ranking in the top 25% for birth weight, 10% \$ Weaning. Heifer bull that is ready for a big set of Heifers.

**LOT
201**

RIPPE DOMAIN 3523L

Reg# 20755248 DOB: 08/12/23

BW: ET Adj. WW: ET

RF INDEX

153

SITZ LOGO 8148
SITZ DOMAIN 12371
SITZ EMMA E 129
SITZ RLS SUBSTANTIAL 10186
SITZ SHAUNA 418
SITZ SHAUNA 1506

\$M	\$W
56	78
75	15
\$B	\$C
173	280
25	35

CED	BW	WW	YW	MK	SC	CEM
5	2	93	168	26	1.94	10
60	70	3	2	50	4	30
HP	CW	MB	REA	CLAW	ANGLE	HS
14.3	82	0.67	0.91	0.38	0.6	0.68
30	4	55	25	15	95	80

Dam Wt:ET %BWW: ET Udder: ET Doc: 1



This bull is a maternal brother to Lot 200. This bull also comes from an embryo purchase. This is a big framed, long bodied, bull that will add stretch to anyone's calf crop. It is shown in his EPD profile as he ranks in the top 3% of the breed for weaning weight, top 4% for Scrotal, 15% for Claw. We put a large emphasis on foot quality with our Angus bulls and you will see that on the sale day. This bull also ranks in the top 4% for Carcass Weight, and top 15% \$ Feedlot.

**LOT
203**

RIPPE MAVERICK 3553L

Reg# 20755365 DOB: 08/21/23

BW: ET Adj. WW: ET

RF INDEX

202

BASIN PAYWEIGHT 1682
POSS MAVERICK
POSS PRIDE 5163
SITZ UPWARD 307R
BALDCO EMULOTA 5835
JMB EMULOTA 013

\$M	\$W
72	88
30	3
\$B	\$C
180	305
20	20

CED	BW	WW	YW	MK	SC	CEM
5	1.2	84	138	32	0.97	2
60	50	10	20	15	45	95
HP	CW	MB	REA	CLAW	ANGLE	HS
12.8	67	0.91	0.64	0.5	0.34	0.84
50	25	35	55	55	4	95

Dam Wt:ET %BWW: ET Udder: ET Doc: 1

Full brother to Lot 202. This is the stouter made and bigger framed bull that excels from a growth and performance standpoint. This bull ranks in the top 10% for weaning weight, 4% for angle, 25% carcass weight, 3% for \$ Weaning, 20% for \$ Beef, and 20% for \$C.



LOT 204**RIPPE RISE ABOVE 4055M**

Reg# 20917581 DOB: 02/02/24

BW: ET Adj. WW: ET

HOFFMAN STAGECOACH 1908
 STELLPFLUG HOFFMAN RISEABOVE
 HOFFMAN 3210 RITA LADY 0256
 KOU PAL ADVANCE 28
 TEHAMA MARY BLACKBIRD E725
 TEHAMA MARY BLACKBIRD B642

RF INDEX	
\$M	\$W
81	79
15	15
\$B	\$C
179	313
20	15

**LOT 204 • RISE ABOVE 4055M**

CED	BW	WW	YW	MK	SC	CEM
12	0.4	81	144	26	0.9	13
10	30	15	15	50	50	10
HP	CW	MB	REA	CLAW	ANGLE	HS
16.5	66	0.79	0.86	0.53	0.37	0.25
15	25	45	30	65	10	15

Dam Wt:ET %BWW: ET Udder: ET Doc: 1

We will forever be grateful that Tehama Angus allowed us to purchase the great donor E725 from them. She is one of my favorite cows of the entire Angus breed and we are ecstatic to showcase her first set of bulls. This Rise Above bull quickly sorted to the top as he excels phenotypically for a depth of body, natural thickness, sound structure, and attractiveness. This is a bigtime spread bull that ranks in the top 10% Calving Ease, 15% Weaning Weight, 20% Heifer Pregnancy, 10% Angle, 25% Carcass weight, 20% \$M, 20% \$B, 15% \$C. This is an elite herd bull.

LOT 205**RIPPE COMMERCE 4074M**

Reg# 20938857 DOB: 02/06/24

BW: ET Adj. WW: ET

GAR SUNBEAM
 CONNEALY COMMERCE
 AVIRA OF CONANGA 814R
 KOU PAL ADVANCE 28
 TEHAMA MARY BLACKBIRD E725
 TEHAMA MARY BLACKBIRD B642

RF INDEX	
\$M	\$W
68	80
40	10
\$B	\$C
173	292
25	25

**LOT 205 • COMMERCE 4074M**

CED	BW	WW	YW	MK	SC	CEM
5	3.2	95	159	22	1.68	13
60	90	2	4	80	10	10
HP	CW	MB	REA	CLAW	ANGLE	HS
11.2	69	0.82	0.94	0.41	0.4	0.46
65	20	40	25	20	20	45

Dam Wt:ET %BWW: ET Udder: ET Doc: 1

Maternal brother to Lot 204. This Commerce son is out of the same cow, and he is easy to find. This bull is very deep bodied, thick made and simply doesn't have any holes outside of being too tame. This is a true performance bull that you want to build a cowherd around. He ranks in the top 2% for weaning weight, 4% yearling weight, 10% scrotal, 20% claw, 20% angle, 20% carcass weight, 10% \$W, 25% \$B, 25% \$C. This is an elite herd bull.

**RISE ABOVE
SIRE OF LOT 204****MARY BLACKBIRD E725
DAM OF LOTS 204, 205, 206 & 207**

LOT 206**RIPPE COMMERCE 4094M**

Reg# 20938859 DOB: 02/08/24

BW: ET Adj. WW: ET

G A R SUNBEAM
 CONNEALY COMMERCE
 AVIRA OF CONANGA 814R
 KOU PAL ADVANCE 28
 TEHAMA MARY BLACKBIRD E725
 TEHAMA MARY BLACKBIRD B642

RF INDEX	
\$M	\$W
60	89
65	2
\$B	\$C
199	318
10	15

CED	BW	WW	YW	MK	SC	CEM
10	3.5	102	176	29	1.08	14
25	90	1	1	30	40	5
HP	CW	MB	REA	CLAW	ANGLE	HS
10.3	85	1.1	0.93	0.54	0.53	0.28
75	3	20	25	70	80	15

Dam Wt: NA %BWW: NA Udder: ET Doc: 1

Full brother to Lot 205. Commerce son that is attractive and doesn't have any phenotypic holes. The combination of Commerce and Advance 28 should produce an elite set of females. This is another performance-oriented bull that ranks in the top 25% calving ease, 1% for both weaning and yearling weight, 3% carcass weight, 20% marbling, 25% ribeye, 2% \$W, 10% \$B, 15% \$C, and a RF index of 217.

**COMMERCE
SIRE OF LOT 206****LOT 207****RIPPE BALDCO VOYAGE 4335M**

Reg# 20916820 DOB: 03/21/24

BW: 81 Adj. WW: 599

S S ODYSSEY H71
 S S VOYAGE
 S S MISS RITA 4P26 P810
 KOU PAL ADVANCE 28
 TEHAMA MARY BLACKBIRD E725
 TEHAMA MARY BLACKBIRD B642

RF INDEX	
\$M	\$W
79	69
20	30
\$B	\$C
196	333
10	10

CED	BW	WW	YW	MK	SC	CEM
10	0.3	69	118	23	0.63	13
25	30	45	50	70	70	10
HP	CW	MB	REA	CLAW	ANGLE	HS
12.5	62	1.13	1.23	0.46	0.37	0.47
50	35	20	5	40	10	45

Dam Wt: NA %BWW: NA Udder: 7/8 Doc: 1

Maternal brother to the last 3 bulls. E725 got injured last spring so this calf was at a disadvantage all summer. Voyage is an Angus herd bull we purchased from Grimmus, and we believe he will leave us with an excellent set of outcross females before he is done. This bull is our 2nd highest for \$C and our 2nd highest for the RF Index. This bull is attractive and complete in his design. Heifer bull that ranks in the top 25% for Calving Ease, 30% Birth Weight, 10% Angle, 5% Ribeye, 20% \$M, 10% \$B, 10% \$C.

**VOYAGE
SIRE OF LOT 207****DAUGHTER OF E725 AND
FULL SIB TO LOT 204****DAUGHTER OF E725 AND
FULL SIB TO LOTS 205 & 206**

LOT 208**RIPPE MAN IN BLACK 4123M**

Reg# 20919001 DOB: 02/10/24

BW: ET Adj. WW: ET

BAR R JET BLACK 5063
 LAR MAN IN BLACK
 JMB MAXINE TG 2131
 TEHAMA PATRIARCH F028
 TEHAMA BLACKCAP K656
 TEHAMA BLACKCAP C262

RF INDEX	
\$M	\$W
81	93
15	1
\$B	\$C
165	295
35	25

CED	BW	WW	YW	MK	SC	CEM
7	2	92	156	35	2.13	7
45	70	3	5	10	2	65
HP	CW	MB	REA	CLAW	ANGLE	HS
14.4	64	1.21	0.79	0.32	0.4	0.86
30	30	15	40	4	20	95

Dam Wt:ET %BWW: ET Udder: ET Doc: 1

When we purchased E725, we also purchased K656 from Tehama. This Man In Black bull is very thick, heavy muscled, and deep bodied. Cattlemen will notice this bull on sale day. He ranks in the top 3% weaning weight, 5% yearling weight, 2% scrotal, 4% claw, 20% angle, 15% marbling, 10% \$M, 1% \$W, 15% \$G, 25% \$C.

**MAN IN BLACK
SIRE OF LOT 208 & 209****LOT 209****RIPPE MAN IN BLACK 4310M**

Reg# 20919004 DOB: 03/10/24

BW: ET Adj. WW: ET

BAR R JET BLACK 5063
 LAR MAN IN BLACK
 JMB MAXINE TG 2131
 TEHAMA PATRIARCH F028
 TEHAMA BLACKCAP K656
 TEHAMA BLACKCAP C262

RF INDEX	
\$M	\$W
87	75
10	20
\$B	\$C
166	302
35	20

CED	BW	WW	YW	MK	SC	CEM
14	0.7	79	134	22	1.46	11
4	40	20	25	80	20	25
HP	CW	MB	REA	CLAW	ANGLE	HS
16.7	62	0.8	0.89	0.37	0.31	0.77
15	35	45	25	10	2	90

Dam Wt:ET %BWW: ET Udder: ET Doc: 1

Full brother to Lot 208. They are made very similar as this bull is also thick made and deep bodied. This heifer bull is a genetic outlier ranking in the top 4% Calving Ease, 20% weaning weight, 20% Scrotal, 10% Heifer Preg, 10% claw, 2% Angle, 5% \$M, 15% \$W, 20% \$C. Look at the birth to growth spread in this Heifer bull.

**BELLEVILLE, KS 66935**

Phone: (785) 527-2293 Toll-Free: 1 (800) 536-2293

LOT 210**RIPPE CRAFTSMAN 4088M**

Reg# 20917846 DOB: 02/08/24

BW: ET Adj. WW: ET

SITZ RESILIENT 10208
 CONNEALY CRAFTSMAN
 BLACK CATHY OF CONANGA 8521
 KR PACESETTER
 MARDAASTI 12
 MARDAASTI 732

RF INDEX	
\$M	\$W
67	91
45	2
\$B	\$C
178	298
25	20

CED	BW	WW	YW	MK	SC	CEM
-3	2.9	95	160	34	1.19	5
95	85	2	4	10	30	80
HP	CW	MB	REA	CLAW	ANGLE	HS
13.1	80	0.85	0.69	0.46	0.46	0.42
45	5	40	50	40	45	35

Dam Wt:ET %BWW: ET Udder: ET Doc: 1

This embryo came from the Marda Angus program in Wisconsin. Craftsman was the #1 Angus bull used last year. He is a performance-oriented bull that will sire calves that top Feeder Cattle sales. He ranks in the top 2% weaning weight, 4% yearling weight, 5% Carcass weight, 2% \$W, 25% \$B, 25% \$C.

**CRAFTSMAN
SIRE OF LOT 210**

LOT 211**RIPPE GETTYSBURG 4149M**

Reg# 20917670 DOB: 02/12/24

BW: ET Adj. WW: ET

WAR CAVALRY B063 Z044
 EZAR GETTYSBURG 1061
 PAF RITA 7096
 CONNEALY RIGHT ANSWER 746
 MF BLACKBIRD 51
 MF BLACKBIRD 82

RF INDEX	
\$M	\$W
90	85
5	4
\$B	\$C
157	294
45	25

**LOT 211 • GETTYSBURG 4149M**

CED	BW	WW	YW	MK	SC	CEM
12	0.2	72	130	44	1	11
10	30	35	30	1	45	25
HP	CW	MB	REA	CLAW	ANGLE	HS
16.2	60	0.87	0.69	0.37	0.42	0.59
15	35	35	50	10	25	65

Dam Wt:ET %BWW: ET Udder: ET Doc: 1

The dam of this bull is one of the very top donors at Marda Angus. This bull has not disappointed and is very deep bodied, sound structured, and flat good. This heifer bull ranks in the top 10% calving ease, 30% birth weight, 20% Heifer preg, 10% Claw, 20% Angle, 10% \$M, 5% \$W, 25% \$C.

LOT 212**RIPPE RIVERSIDE 4255M**

Reg# 20921063 DOB: 02/23/24

BW: 92 Adj. WW: 649

VERMILION BOMBER G017
 VERMILION RIVERSIDE
 VERMILION EULIMA 0239
 CONNEALY COUNTDOWN
 VERMILION ELDINA 6467
 VERMILION ELDINA 3284

RF INDEX	
\$M	\$W
69	72
40	25
\$B	\$C
139	249
65	60

**RIVERSIDE
SIRE OF LOT 212**

CED	BW	WW	YW	MK	SC	CEM
7	1.4	83	139	18	0.72	7
45	55	15	20	95	65	65
HP	CW	MB	REA	CLAW	ANGLE	HS
13.3	63	0.13	1.18	0.5	0.34	0.56
45	30	95	10	55	4	60

Dam Wt:1580 %BWW: 41.08% Udder: 8/8 Doc: 1

This bull's dam was my pick of the Vermillion 8-year-old cows. Pathfinder cow that excels from a natural rib shape, and structure standpoint with a gorgeous udder. This bull is out of Riverside, a high seller from 2 years ago. This is a performance-oriented bull who ranks in the top 10% weaning weight, 15% yearling weight, 5% angle, 25% carcass weight, 10% ribeye, 20% \$W.

LOT 213**RIPPE VOYAGE 4311M**

Reg# 20918865 DOB: 03/10/24

BW: ET Adj. WW: ET

S S ODYSSEY H71
 S S VOYAGE
 S S MISS RITA 4P26 P810
 CONNEALY CONFIDENCE PLUS
 SANKEY RUTH 934
 RUTH S S D180

RF INDEX	
\$M	\$W
73	77
30	15
\$B	\$C
201	334
10	10

**ELDINA 6467
DAM OF LOT 212**

CED	BW	WW	YW	MK	SC	CEM
12	0.6	76	131	29	0.44	14
10	35	25	30	30	80	5
HP	CW	MB	REA	CLAW	ANGLE	HS
14	63	1.45	1.08	0.46	0.38	0.84
35	30	10	15	40	10	95

Dam Wt:ET %BWW: ET Udder: ET Doc: 1

We purchased a flush from Belts Angus in the National Angus sale and flushed her to our herd bull Voyage. This is the highest \$C and \$RF index Angus bull. This bull is thick made and attractive. Heifer bull that ranks in the top 10% calving ease, 25% weaning weight, 30% yearling weight, 10% angle, 10% marbling, 10% ribeye, 5% \$G, 10% \$B, 10% \$C. Call me when you sell the calves out of this bull.

Elanco™

Pradalex™
(pradofloxacin injection)

In the race to treat BRD, speed wins.

Pradalex, a first-of-its-kind antibiotic, reaches peak concentration within 45 minutes and starts killing BRD bacteria within 5 minutes on contact.¹ While targeting two DNA replication sites, Pradalex hits BRD with 3x the power in less than half the time.^{1,2}

Faster recovery. Less stress³.
Everyone wins with Pradalex.

Beat BRD with Pradalex

¹Elanco Animal Health. Data on File.

²Blondeau, J.M.; Fitch, S.D. Comparative In Vitro Killing by Pradofloxacin in Comparison to Ceftiofur, Enrofloxacin, Florfenicol, Marbofloxacin, Tildipirosin, Tilmicosin and Tulathromycin against Bovine Respiratory Bacterial Pathogens. *Microorganisms* 2024, 12

³Elanco Animal Health. Data on File.

IMPORTANT SAFETY INFORMATION

Caution: Federal law restricts this drug to use by or on the order of a licensed veterinarian. Not for use in humans. Keep out of reach of children. Avoid contact with eyes and skin. Individuals with a history of hypersensitivity to quinolones should avoid this product. Not for use in animals intended for breeding greater than 1 year of age because the effects of Pradalex on bovine reproductive performance, pregnancy, and lactation have not been determined. Not for use in beef and dairy calves less than 2 months of age, and veal calves; a withdrawal period has not been established for this product in pre-ruminating calves. Quinolones should be used with caution in animals with known or suspected central nervous system (CNS) disorders. Mild to moderate inflammatory changes of the injection site may be seen in cattle treated with Pradalex. See package insert for additional safety information.

Pradalex, Elanco and the diagonal bar logo are trademarks of Elanco or its affiliates.

©2024 Elanco. PM-US-24-1407(2)

Right for cattle. Right by you.

Elanco

TM